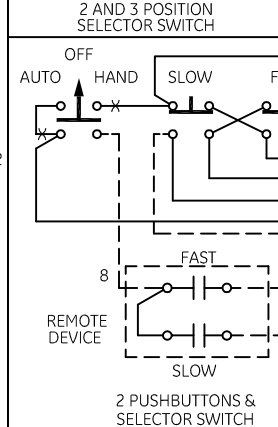
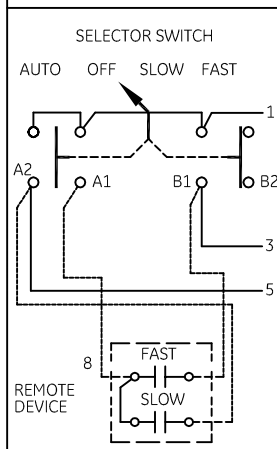
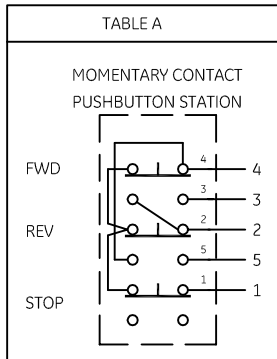
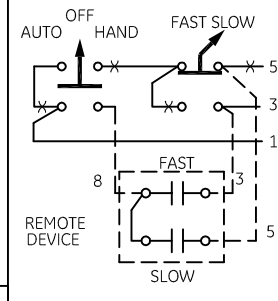
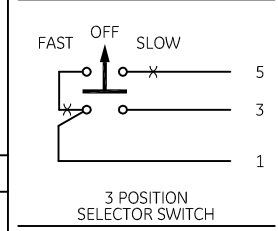
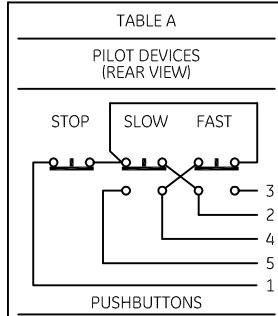


-NOMENCLATURE-
 F & S-FAST,SLOW-SPEED
 CONTACTORS MECHANICALLY
 AND ELECTRICALLY
 INTERLOCKED
 OL-OVERLOAD RELAY
 I-INDICATING LIGHT
 *-IF USED
 FU-FUSE

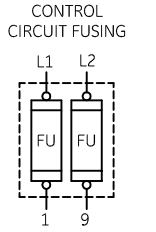
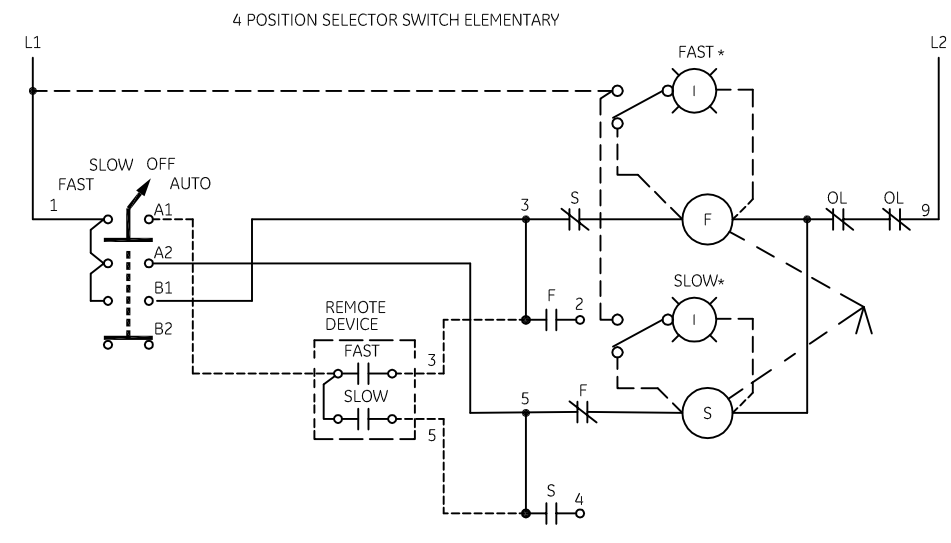
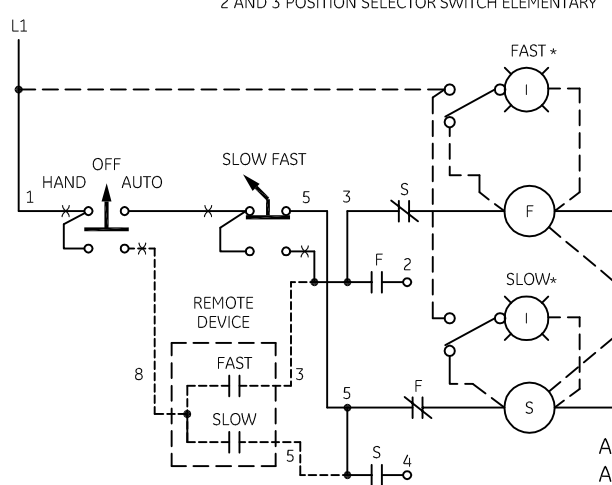
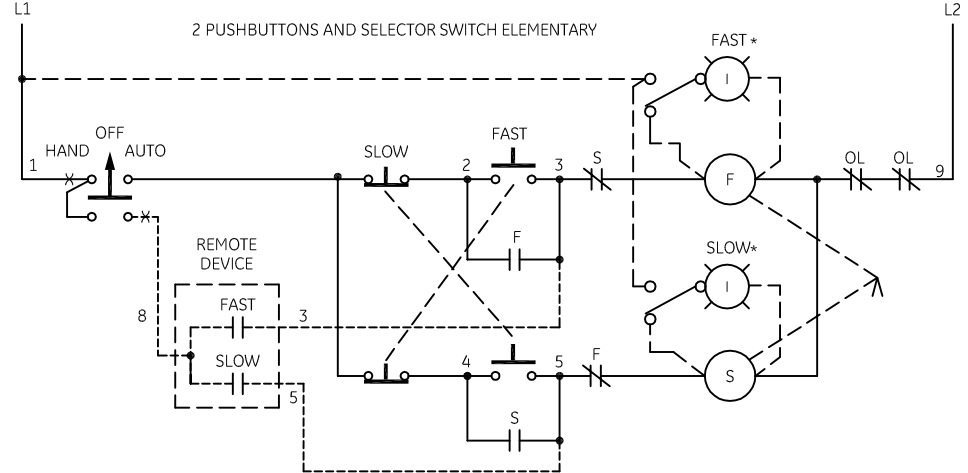
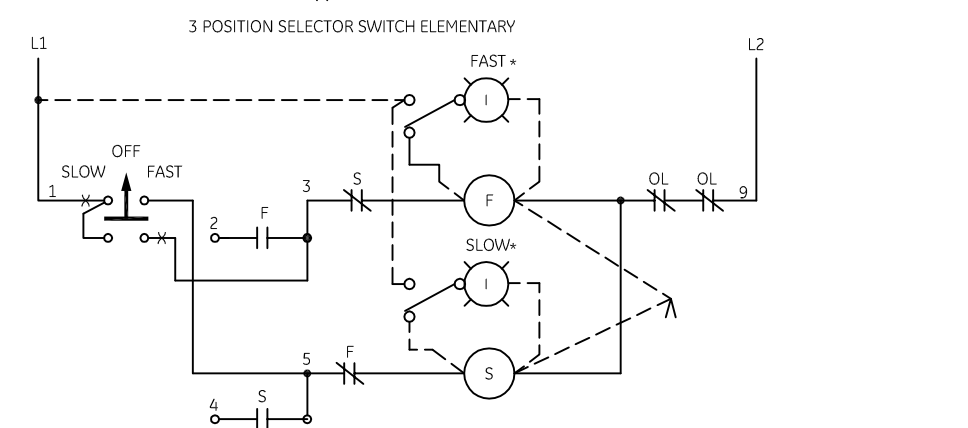
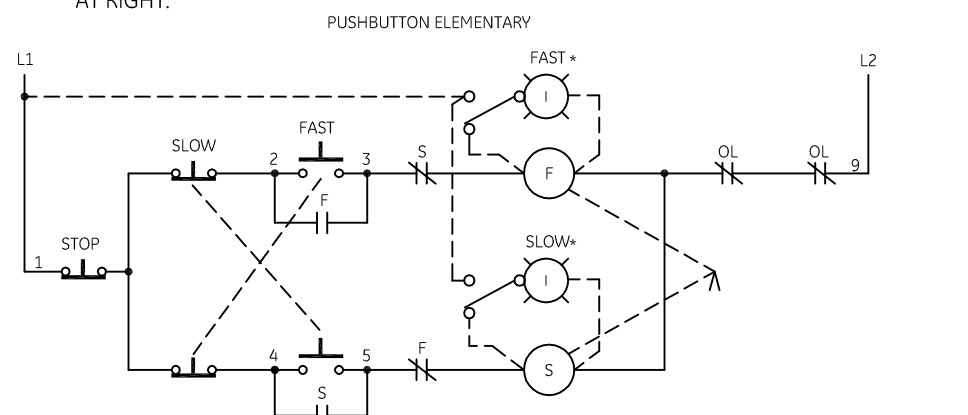
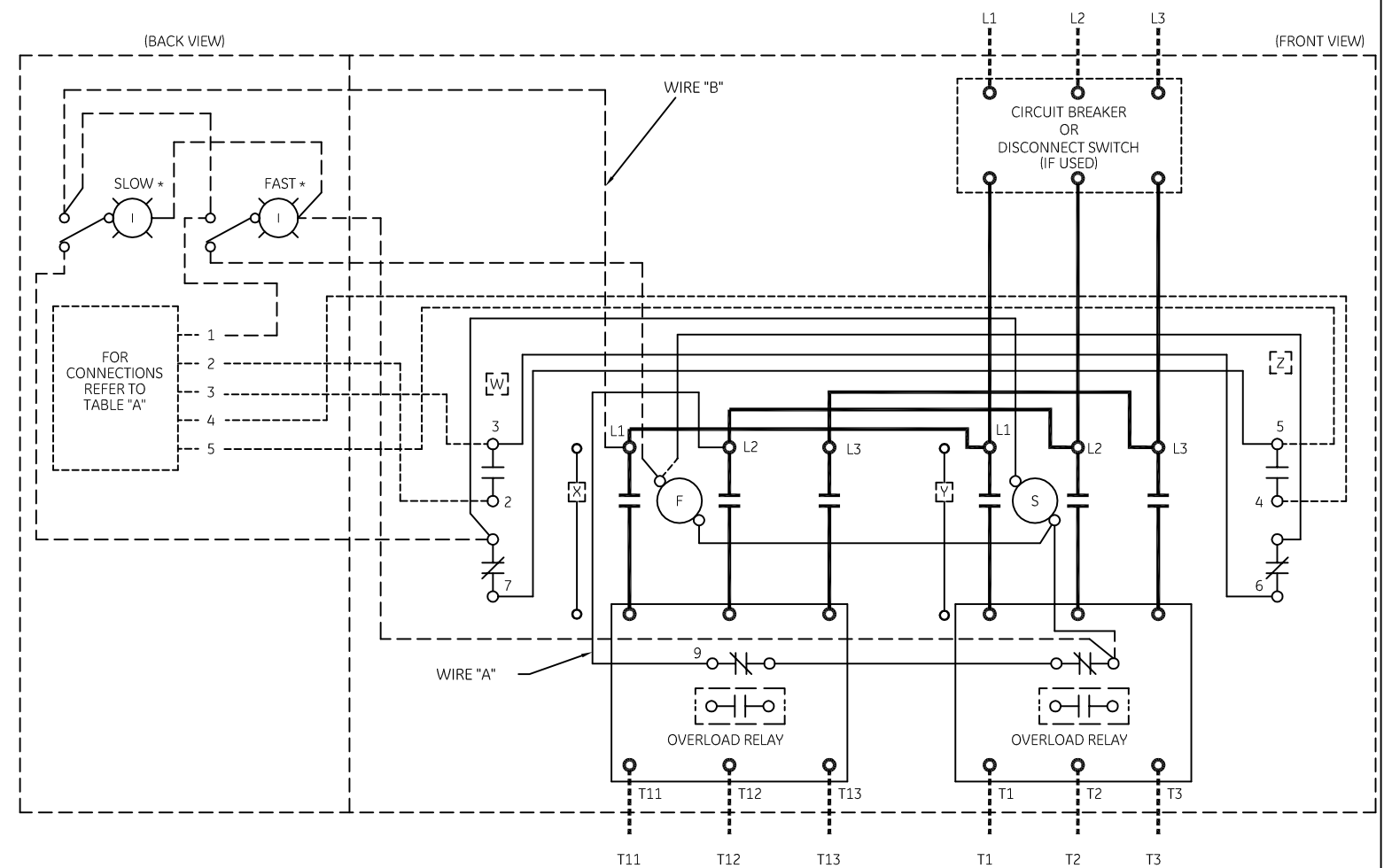
GROUND KIT		
1/2-IN CONDUIT	55-213403G001	
3/4-IN CONDUIT	55-213403G002	
1-IN CONDUIT	55-213403G003	
1 1/4-IN CONDUIT	55-213403G004	
1 1/2-IN CONDUIT	55-213403G005	
2-IN CONDUIT	55-213403G006	
2 1/2-IN CONDUIT	55-213403G007	
3-IN CONDUIT	55-213403G008	

FOR SEPARATE CONTROL SOURCE-REMOVE WIRES "A" & "B"
 AND CONNECT SEPARATE CONTROL SOURCE TO 9 ON OL
 AND TO 1 ON PILOT DEVICE. WIRES "A" & "B" ARE
 OMITTED AT FACTORY ON ALL CONTROLLERS WITH A
 COIL VOLTAGE OF 120V OR LESS.

	LINE	LOAD
USE 75°C COPPER CONDUCTORS ONLY, FOR FIELD WIRING. TORQUE LINE AND LOAD TERMINALS AS MARKED OR AS SHOWN AT RIGHT:	CR309 20 LB-IN	20 LB-IN
	CR310 AS MARKED	20 LB-IN
	CR311 35 LB-IN	20 LB-IN
	CR390 AS MARKED	20 LB-IN



NOTE: ADDITIONAL OVER-CURRENT PROTECTION
 MAY BE REQUIRED. REFER TO THE
 NATIONAL ELECTRICAL CODE OR LOCAL
 ELECTRICAL CODE AS REQUIRED.



SELECTOR SWITCH

CONTACT	POSITION			
	FAST	SLOW	OFF	AUTO
A1				X
A2		X		
B1	X			
B2			X	

ALTERNATIVE LEGENDS FOR FAST AND SLOW
 ARE HIGH AND LOW.
 FOR EXTRA AUXILIARY CONTACTS - A MAXIMUM OF 4
 CONTACTS MAY BE ADDED AT POSITIONS
 W,X,Y & Z.
 FOR CONTROLLER WITHOUT DISCONNECT MEANS-WIRE
 LINE DIRECT TO L1, L2 AND L3 ON CONTROLLER.

AN #	THIRD ANGLE PROJECTION	SHEET #
09-9115		1 OF 1

imagination at work

WIRING DIAGRAM
 2 SPEED - 2 WINDING SIZE 0 & 1

DWG NO.	DATE	REV
55-537744	09/11/2009	2