

IMPORTANT NOTE:
WHEN ANY SHEET OF THIS DRAWING IS REVISED, ALL SHEETS MUST BE UPDATED TO CARRY THE SAME REVISION NUMBER. THIS WIRING DIAGRAM IS CREATED FOR ALL POSSIBLE CONTROL OPTIONS.

- NOMENCLATURE**
- M2 LOAD CONTACTOR
 - M3 BYPASS CONTACTOR
 - INVTR INVERTER
 - LT INDICATING LIGHT
 - E-STOP EMERGENCY STOP PUSH BUTTON
 - CPT CONTROL POWER TRANSFORMER
 - FU CPT PRIMARY FUSE
 - SFU CPT SECONDARY FUSE
 - CTB1 CONTROL TERMINAL BOARD
 - DSCW DISCONNECT
 - OL OVERLOAD RELAY
 - RLY RELAY
 - SSW SELECTOR SWITCH
 - S201&S201 SWITCH (PART OF DRIVE)
 - FSBLK1 FUSE BLOCK
 - SPDPOT SPEED POTENTIOMETER
 - ETM ELAPSED TIME METER
 - SPR SMOKE PURGE RELAY
 - LDR LOAD REACTOR
 - ACR AC LINE REACTOR
 - M3TMR TIME DELAY RELAY

FOR CSA GROUND KIT, ORDER KIT NUMBER FROM THE FOLLOWING TABLE:

CONDUIT SIZE	KIT NUMBER
1/2-IN CONDUIT	55-2134036001
3/4-IN CONDUIT	55-2134036002
1-IN CONDUIT	55-2134036003
1 1/4-IN CONDUIT	55-2134036004
1 1/2-IN CONDUIT	55-2134036005
2-IN CONDUIT	55-2134036006
2 1/2-IN CONDUIT	55-2134036007

- LEGEND**
- CUSTWIRE L CUSTOMER LOW LEVEL WIRING < 50V
 - CUSTWIRE C CUSTOMER HIGH LEVEL WIRING > 50V THRU 125V
 - CUSTWIRE P CUSTOMER POWER WIRING > 125V
 - DOOR MOUNTED COMPONENT
 - ⊠ REMOTE MOUNTED COMPONENT
 - △ FACTORY WIRED JUMPER

- CONTROL WIRING**
- 22 LINE VOLTAGE CONTROL WIRING N50KC41JA #14 BLACK
 - 23 CPT VOLTAGE CONTROL WIRING N50KC41HC #16 RED
 - 24 N50KC41HB #16 WHITE (WIRE 28)
 - 25 CPT GROUND WIRING 55-216961P006 #14 GREEN&YELLOW
 - 26 24V DRIVE CONTROL WIRING N50KC41HF #16 BLUE
 - 27 DRIVE GROUND WIRING VARIES BY RATINGS. REFER TO BILL OF MATERIAL
- POWER WIRING**
- 29 VARIES BY RATINGS. REFER TO BILL OF MATERIAL
 - 30 USE 75°C COPPER CONDUCTORS ONLY, FOR FIELD WIRING. TORQUE LINE AND LOAD TERMINALS AS MARKED ON COMPONENT INSTRUCTION SHEET

- NOTES:**
5. RELAY1 PROGRAMMED FOR FAULT INDICATION
 6. RELAY2 PROGRAMMED FOR DRIVE RUN INDICATION
 7. DRIVE INPUT SIGNALS ARE SHOWN FOR 'PNP' (SOURCE) LOGIC.
 8. DRIVE WILL BE PROGRAMMED (PARAMETER C20) TO RUN AT PRESET SPEED (@ 50HZ-JOG FREQUENCY)
 9. MINIMAL TIME DELAY OF 10 SECONDS IS NECESSARY PRIOR TO CLOSING THE REMOTE BYPASS CONTACTS, REFER INSTRUCTION FOR MORE DETAIL.

- NOTES:**
1. DRIVE OUTPUT (M2) AND BYPASS (M3) CONTACTORS ARE MECHANICALLY INTERLOCKED.
 2. DC LINK REACTOR (DCR) IS BUILT INTO THE DRIVE.
 3. BYPASS CONTACTOR (M3) CONTAINS TOP MOUNTED ELECTRONIC TIMER.
 4. - 'POWER ON' LT1 - 'BYPASS RUN' LT4 - 'DRIVE FAULT' LT3 - 'MOTOR OVERLOAD' LT6 - 'DRIVE RUN' LT5 - 'ENABLE' LT7

INDICATING LIGHTS ARE INCLUDED IN THE BASIC INDICATING LIGHT GROUP OPTION

REVISIONS

REV	DESCRIPTION	DATE
9	AN 11-2005	05/18/11

UNLESS OTHERWISE SPECIFIED	SIGNATURES	DATE
DIMENSIONS ARE IN INCHES TOLERANCES ON: 2 PL DECIMALS ± 3 PL DECIMALS ± ANGLES ± FRACTIONS ±	DRAWN ANANTVIJAY CHECKED ENGRG ISSUED	12/12/08 10/26/10
AUTOMATION-TOOL-REV	FORMERLY	SCALE
BASED ON 55-537776s1 REV 9	TOL. PER	SHEET 1 CONT 2

GE Industrial Systems

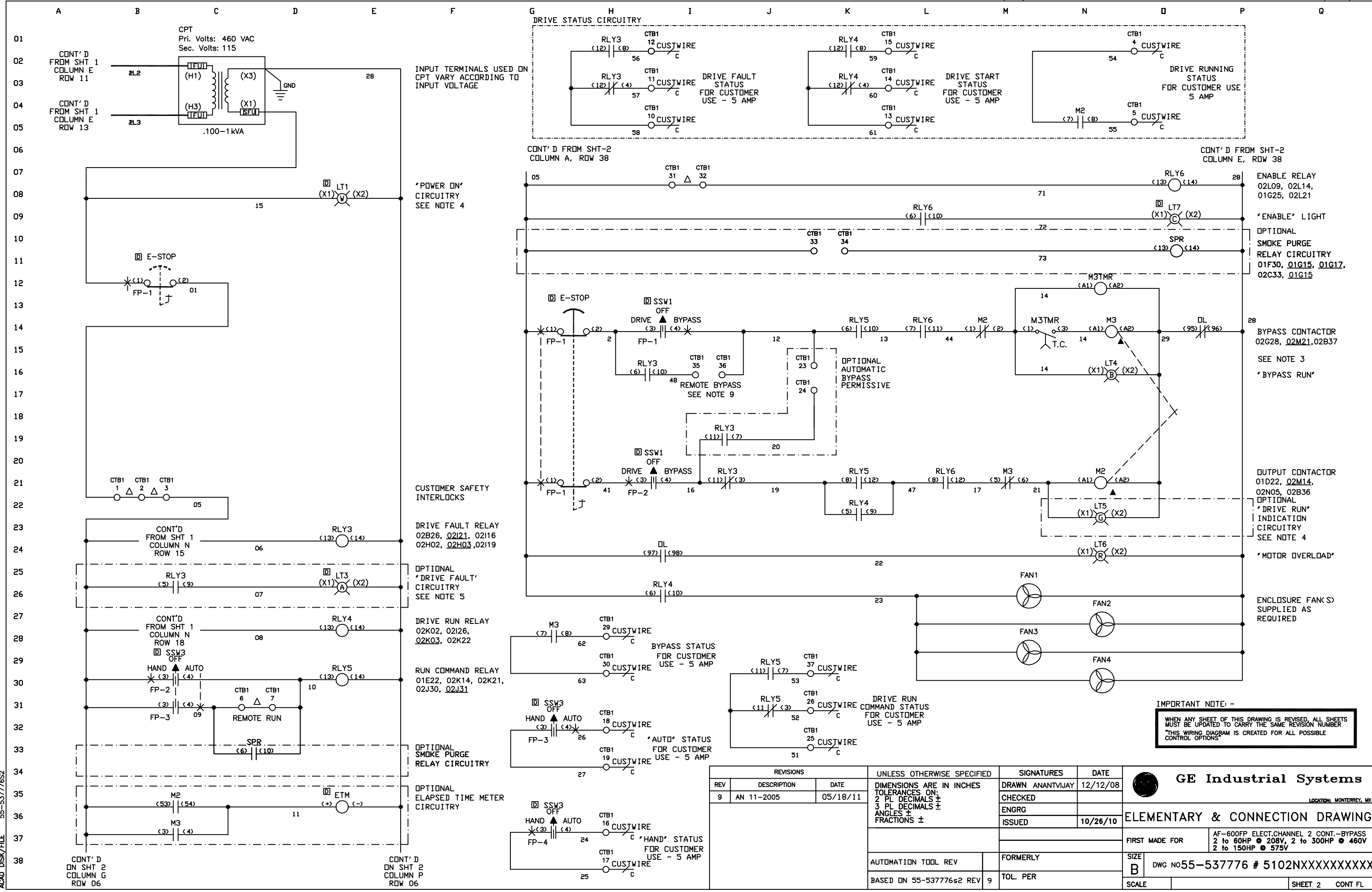
LOCATION: MONTERREY, MX

ELEMENTARY & CONNECTION DRAWING

FIRST MADE FOR AF-600FP ELECT.CHANNEL 2 CONT.-BYPASS 2 to 60HP @ 208V, 2 to 300HP @ 460V 2 to 150HP @ 575V

SIZE B DWG No55-537776 # 5102NXXXXXXXXXX

ACAD_DISK/FILE 55-537776s1



REVISIONS			UNLESS OTHERWISE SPECIFIED	SIGNATURES	DATE
REV	DESCRIPTION	DATE	DIMENSIONS ARE IN INCHES TOLERANCES ON: 2 PL DECIMALS ± 3 PL DECIMALS ± ANGLES ± FRACTIONS ±	DRAWN ANANTVIJAY	12/12/08
9	AN 11-2005	05/18/11		CHECKED	
				ENGRG	
				ISSUED	10/26/10
AUTOMATION TOOL REV			FORMERLY	SIZE B	DWG NO 55-537776 # 5102NXXXXXXXXXX
BASED ON 55-537776s2 REV 9			TOL. PER	SCALE	SHEET 2 CONT FL

ACAD_DISK/FILE 55-537776S2