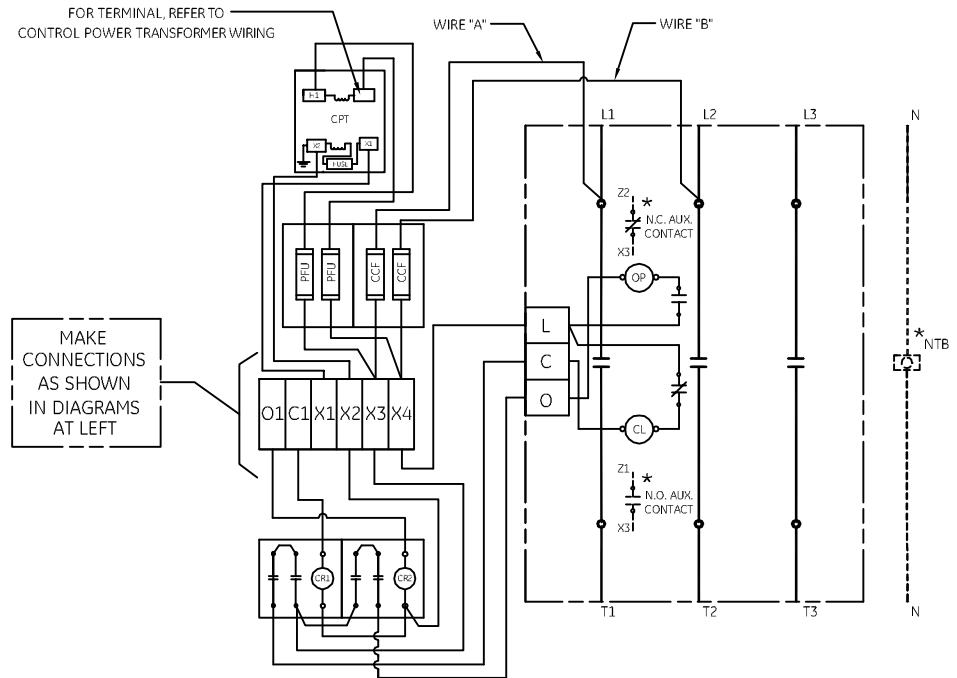
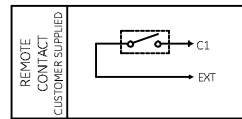
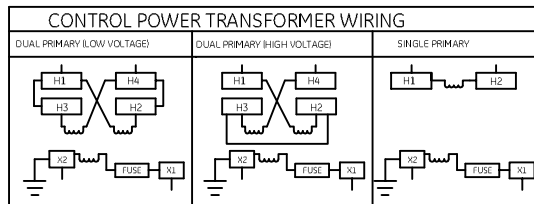


**\* TABLE : OPTIONAL PILOT LIGHTS**

ON STANDARD		Z1 X3 ← N.O. AUX. CONTACT
ON PUSH-TO-TEST		Z1 X3 ← N.O. AUX. CONTACT
OFF STANDARD		Z2 X3 ← N.C. AUX. CONTACT
OFF PUSH-TO-TEST		Z2 X3 ← N.C. AUX. CONTACT

**\* TABLE : OPTIONAL PILOT DEVICES FOR 3 WIRE CONTROL**

ON & OFF PUSHBUTTONS		O1 X1 C1
OFF - ON or OFF - AUTO SELECTOR SWITCH		C1 for "ON" or EXT for "AUTO" O1 X1
OFF-ON SELECTOR SWITCH WITH SPRING RETURN TO CENTER		C1 O1 X1



**CR160MC MECHANICALLY HELD CONTACTOR WIRING OPTIONS**  
**USE FOR 3- WIRE CONTROL, WHEN COIL VOLTAGE IS DIFFERENT FROM CONTROL VOLTAGE, AND CONTROL VOLTAGE IS SUPPLIED BY CPT.**

NOTE:  
 ADDITIONAL OVER-CURRENT PROTECTION FOR CONTROL CIRCUIT MAY BE REQUIRED.  
 REFER TO THE NATIONAL ELECTRIC CODE OR LOCAL ELECTRIC CODE AS REQUIRED.

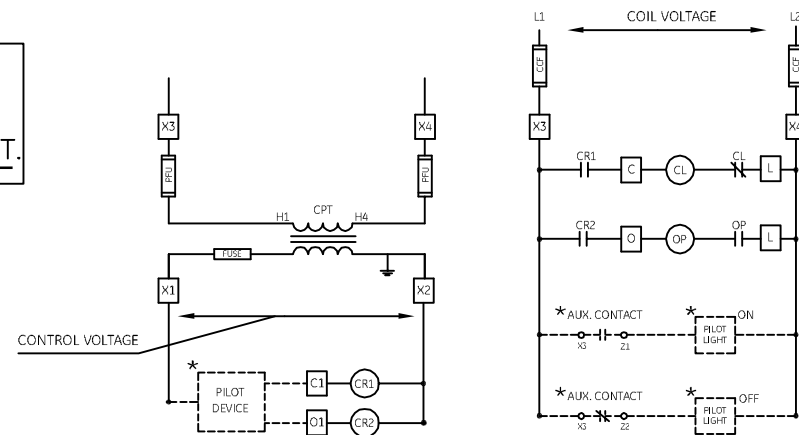
WHEN COIL AND LINE VOLTAGES ARE DIFFERENT REMOVE WIRE "A" & "B".

ORDER KIT NUMBER FROM THE FOLLOWING TABLE

CONDUIT SIZE	KIT NUMBER
1/2-IN CONDUIT	55-213403G001
3/4-IN CONDUIT	55-213403G002
1-IN CONDUIT	55-213403G003
1 1/4-IN CONDUIT	55-213403G004
1 1/2-IN CONDUIT	55-213403G005
2-IN CONDUIT	55-213403G006
2 1/2-IN CONDUIT	55-213403G007
3-IN CONDUIT	55-213403G008

RATING	WIRE RANGE AWG or kcmil	CONTACTOR TORQUE LB-IN	NEUTRAL TB TORQUE LB-IN
30A	#14 - #10	35	20
	#8	40	25
	#6	45	35
60 - 100A	#14 - #10	35	50
	#8	40	50
	#6 - #4	45	120
150A	#2 - #1/0	50	120
	#6 - 250	275	275
200-225A	#6 - 350	375	275

**NOMENCLATURE**  
 OP - OPENING COIL  
 CL - CLOSING COIL  
 CCF - CONTROL CIRCUIT FUSE  
 CPT - CONTROL POWER TRANSFORMER  
 PFU - PRIMARY FUSE  
 NTB - NEUTRAL TERMINAL BOARD  
 CR - CONTROL RELAY  
 \* - IF USED



**imagination at work**

**WIRING DIAGRAM**  
**160MC LIGHTING CONTACTOR**

AN #	THIRD ANGLE PROJECTION	SHEET #	DWG NO.	DATE	REV
10-9123		1 OF 1	55-686613	04/18/2010	4