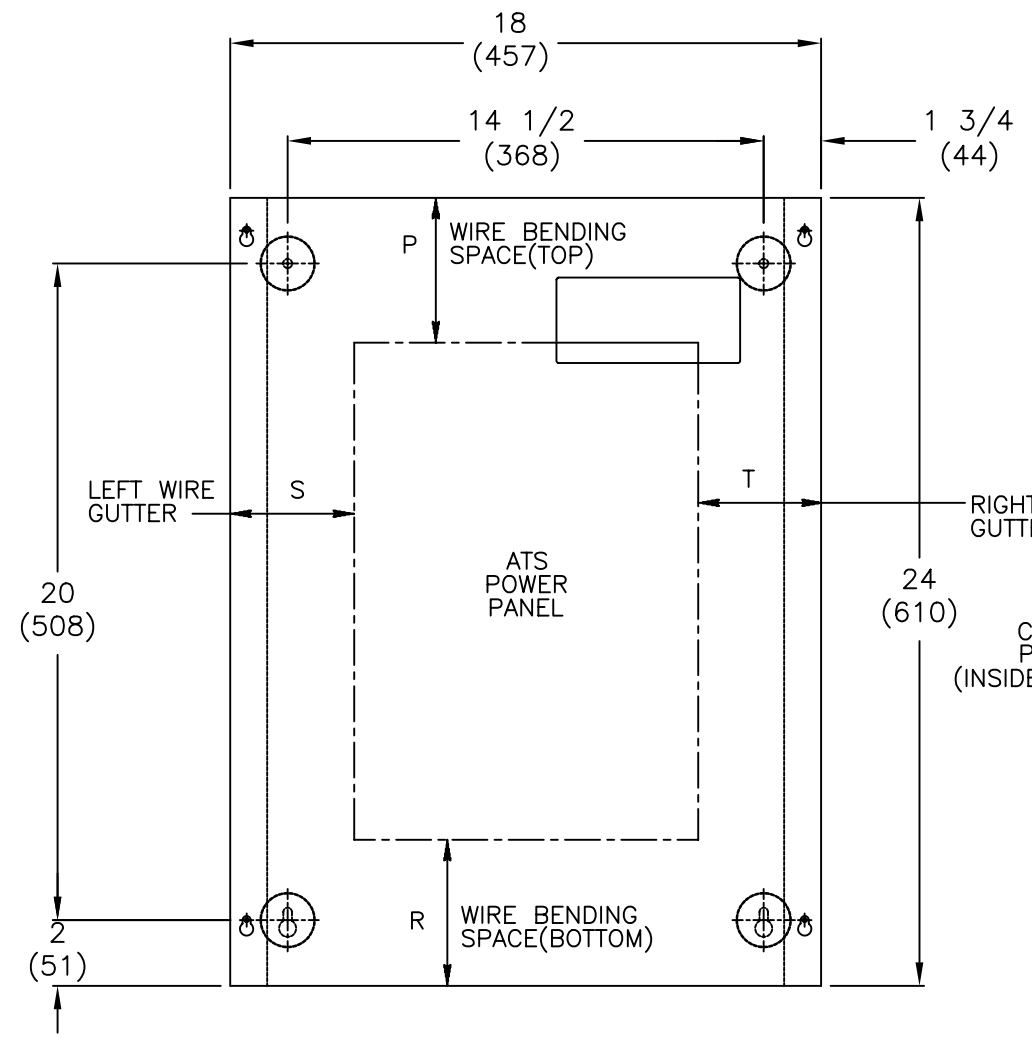
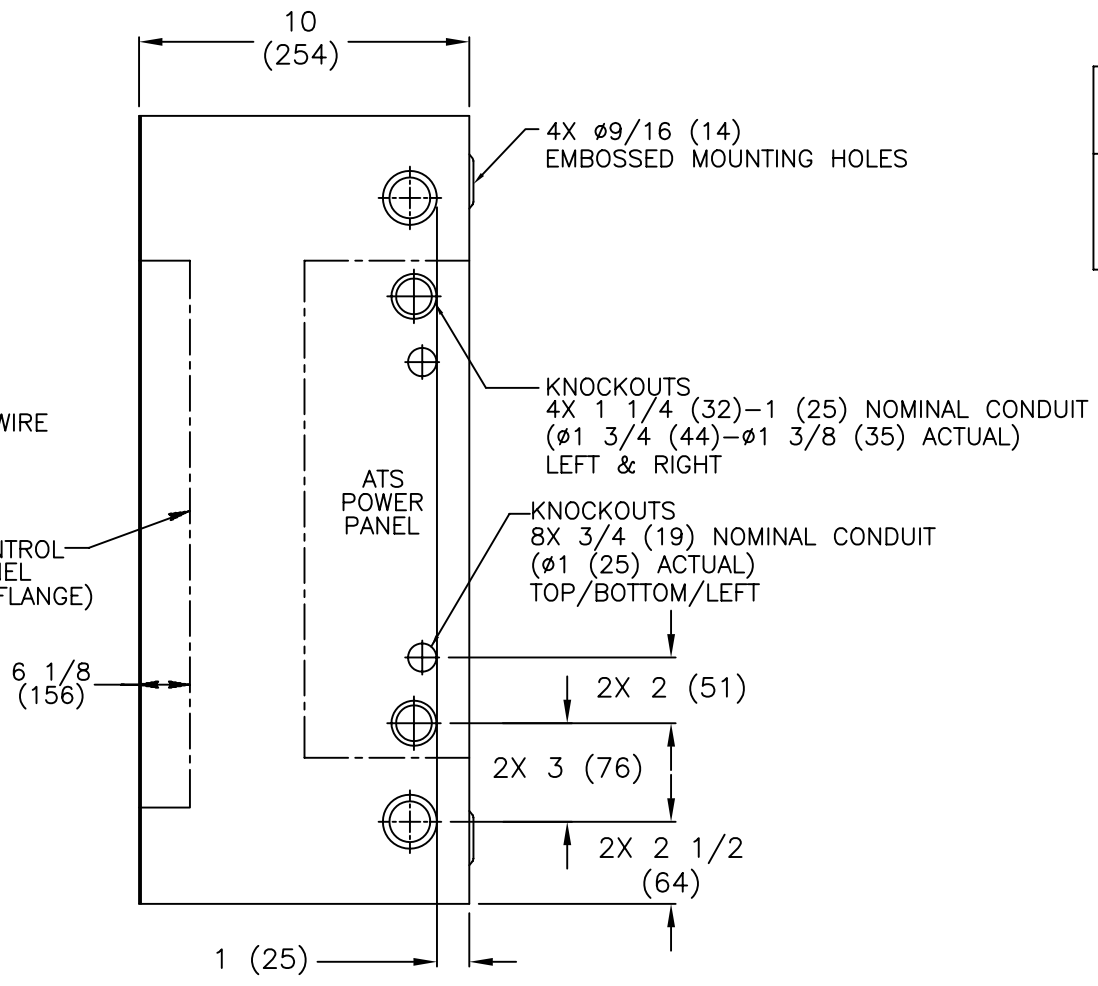


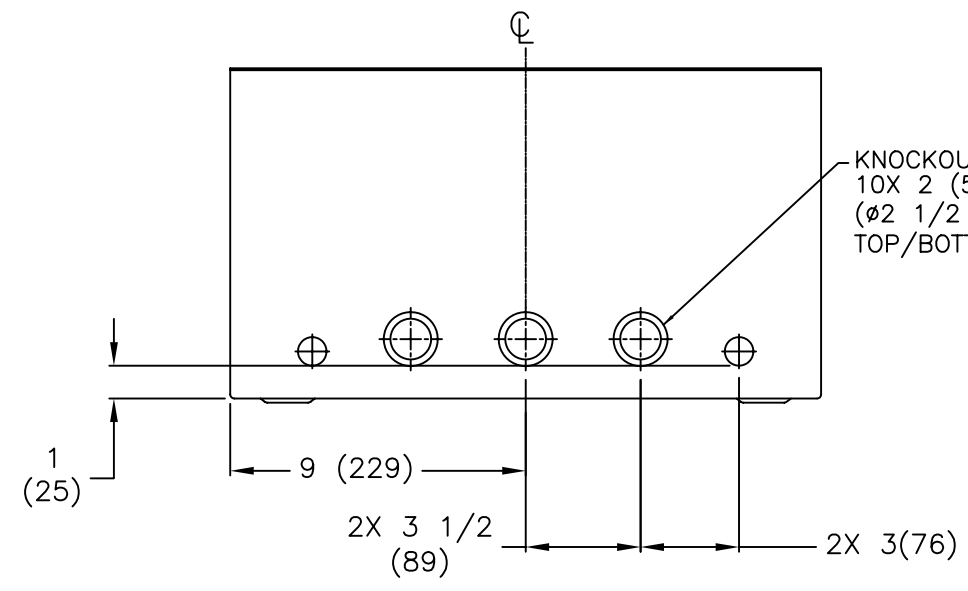
REVISIONS			
REV.	DESCRIPTION	DATE	APPROVED
E	S-8333	04/12/06	SS MAS



FRONT VIEW



SIDE VIEW

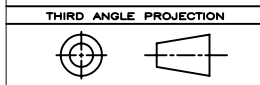


BOTTOM VIEW

CABINET	NO. POLES	WIRE BENDING SPACE		WIRE GUTTERS	
		P(TOP)	R(BOTTOM)	S(LEFT)	T(RIGHT)
F-1824MP	2,3,4	17 5/8 (448)	16 5/8 (422)	5 1/8 (130)	3 3/4 (95)

NOTES:

- MATERIAL: 16 GA. 1018 HRS .063(2) REF. (F-1824MP)
- FINISH: ANSI 61 GREY
- ALL DIMENSIONS ARE FOR REFERENCE ONLY AND SHOWN IN INCHES(MILLIMETERS).
- CONSTRUCTION PER UL 1008



GE PROPRIETARY AND CONFIDENTIAL INFORMATION  
 This document is the property of General Electric Company ("GE") and contains proprietary information of GE. This document is loaned on the express condition that neither it nor the information contained therein shall be disclosed to others without the express written consent of GE Industrial Systems, and that the information shall be used by the recipient only as approved expressly by GE Industrial Systems. This document shall be returned to GE upon its request. This document may be subject to certain restrictions under U.S. export control laws and regulations.

FOR ADDITIONAL INFO REFER TO	SIGNATURES	DATE	GE Zenith Controls	
APPLIED PRACTICES	MODEL MAS	1/26/05	TITLE NEMA 1 ENCLOSURE ZTX	
UNLESS OTHERWISE SPECIFIED DIMENSIONS ARE IN INCHES	DETAIL			
TOLERANCES ON:	CHECKED			
2 PL. DECIMALS ± .020	ENGRG MAS	1/26/05		
3 PL. DECIMALS ± .005	MFG		FIRST MADE FOR: ZTX MX60	
ANGLES ± 1°	QUALITY		SIZE	CAGE CODE
FRACTIONS ± 1/64	ISSUED		D	
FINISH ✓	DRAWING FILE: 57c-1014-e-1.dwg		DWG NO	
	MODEL / ASSEMBLY FILE: ZTX 4-20 (40-200 AMPS)		57C-1014	
AutoCad Generated	# CTQs	CRITICAL TO QUALITY CHARACTERISTIC	SCALE: NA	SHEET 1 OF 2