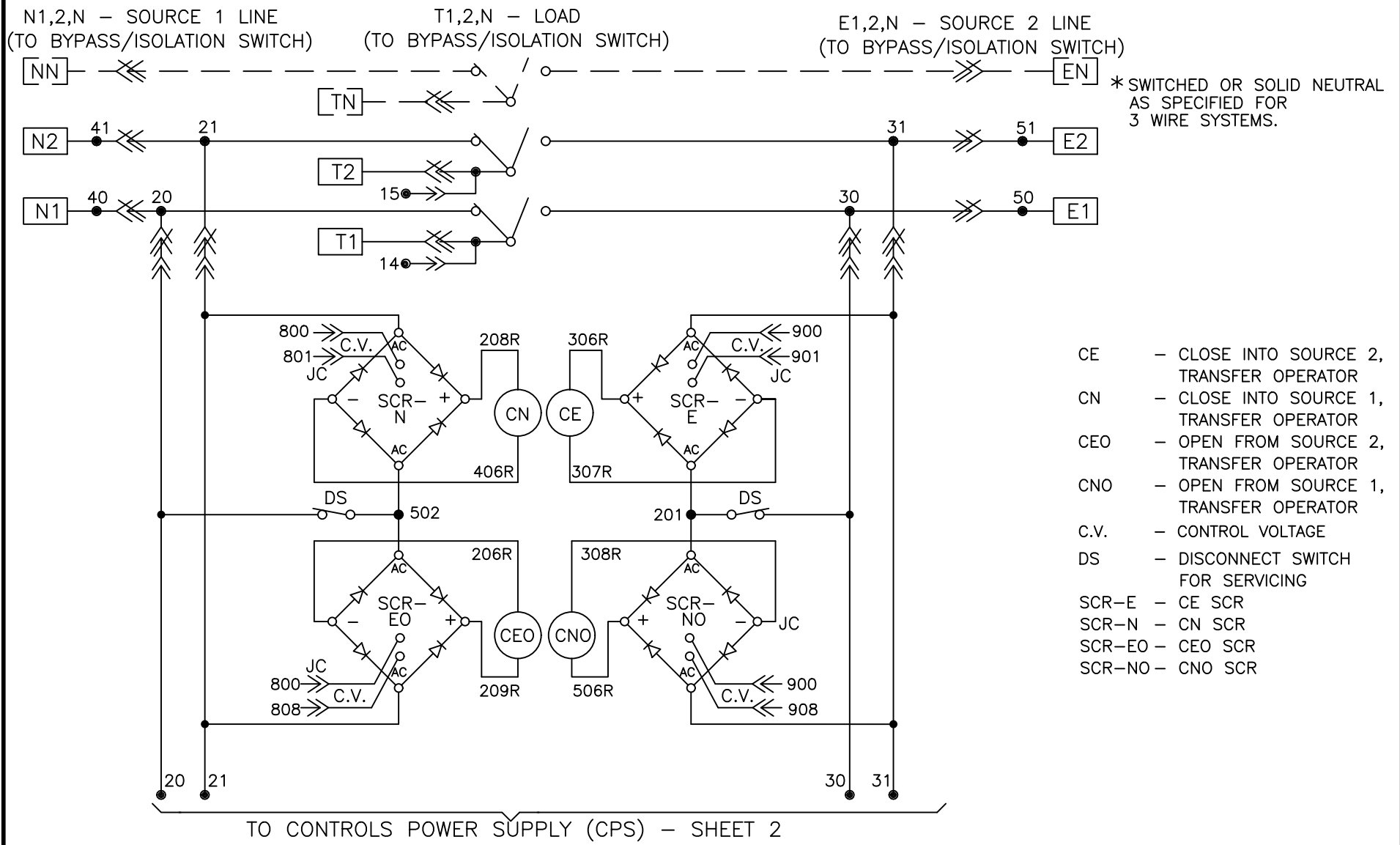


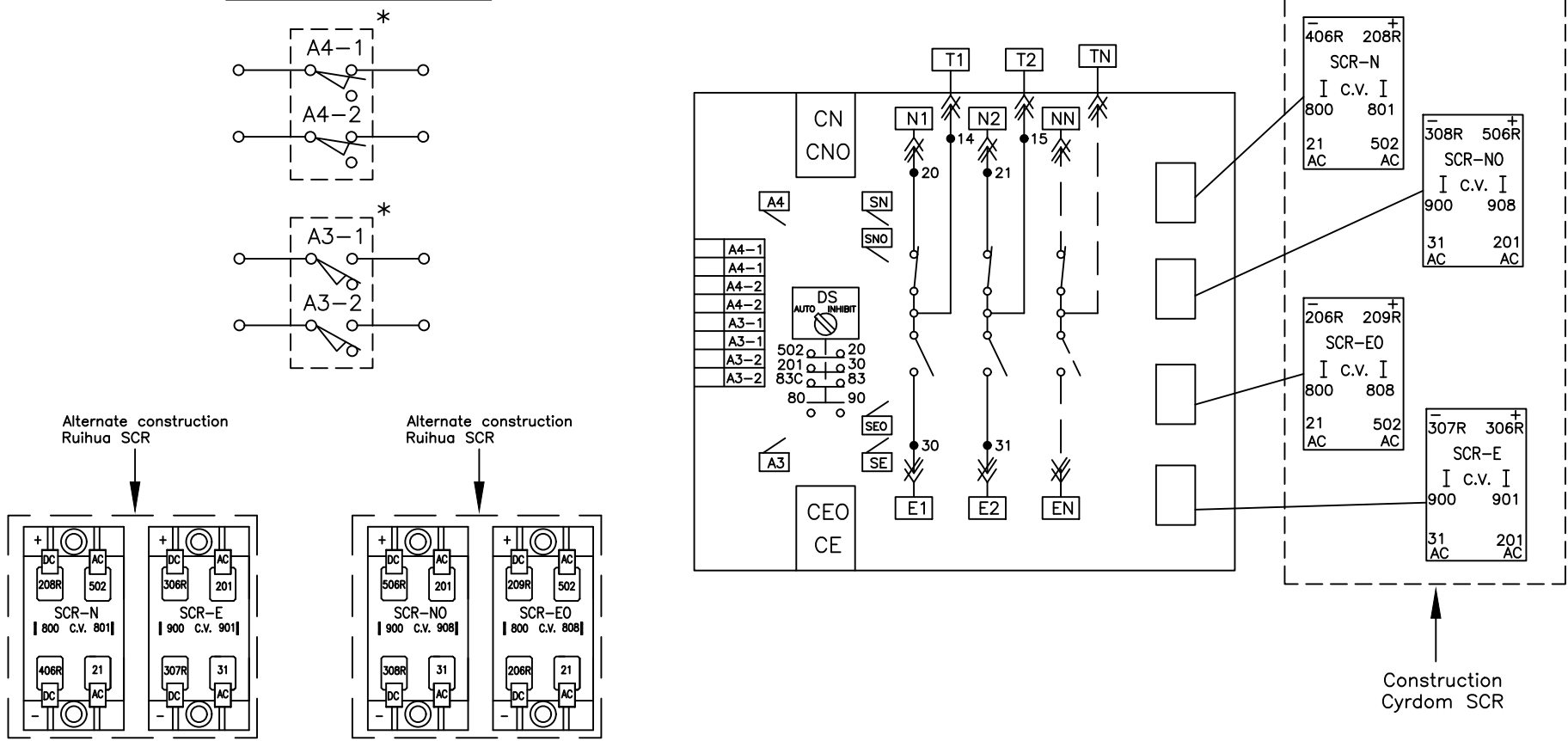
ATS POWER CIRCUIT SCHEMATIC

REVISIONS			
REV.	DESCRIPTION	DATE	APPROVED
3	C077097	09/24/19	AR MAS

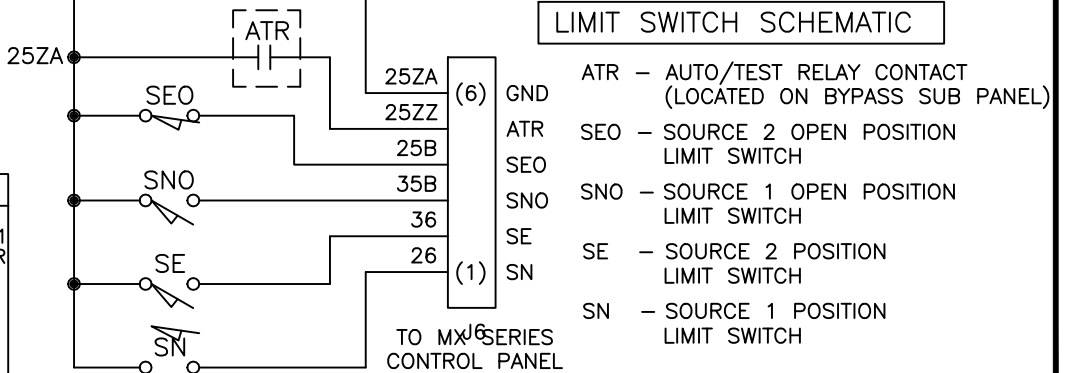


AUXILIARY CONTACTS

ATS POWER PANEL LAYOUT



LIMIT SWITCH SCHEMATIC

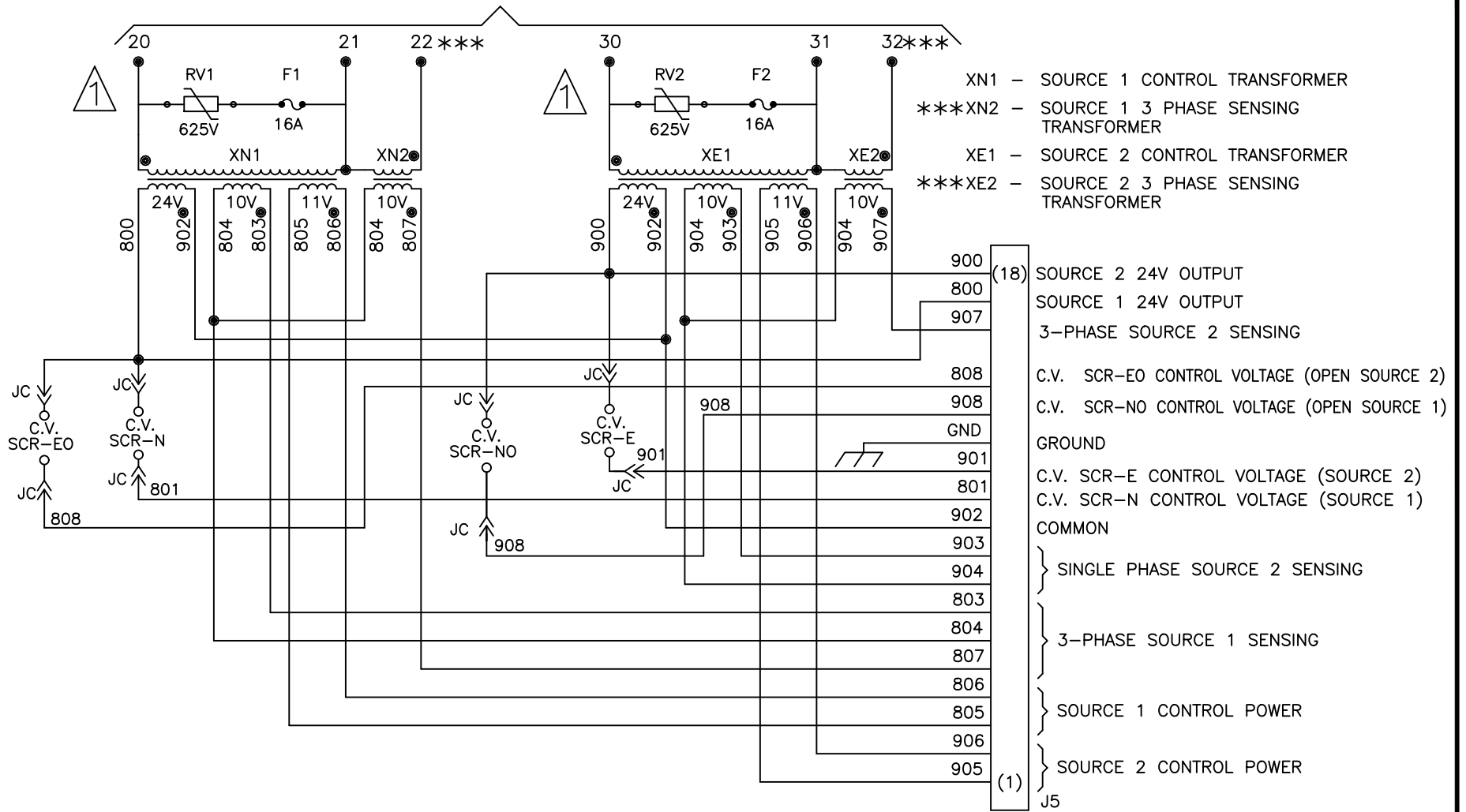


LEGEND	REFERENCE	NOTES
● WIRE CONNECTION	LEGEND, OPERATION, AND ACCESSORIES: 72A-0900D MX250 CONTROLLER-71A-0500	ATS SHOWN IN SOURCE 1 POSITION WITH NO POWER AVAILABLE.
○ WIRE ON TERMINAL BLOCK		
➤ WIRE IN INTERCONNECT PLUG		
* OPTIONAL		

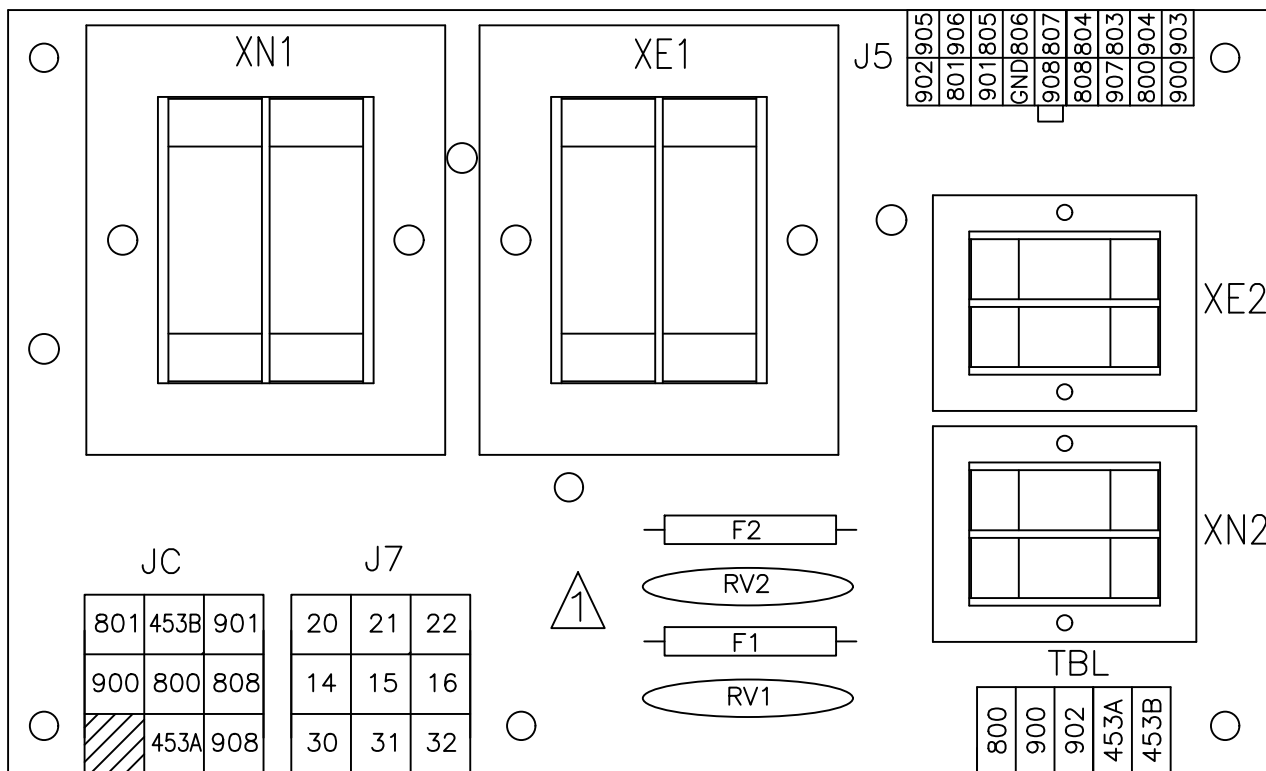
ABB PROPRIETARY AND CONFIDENTIAL INFORMATION The information contained in the document has to be kept strictly confidential. Any unauthorized use, reproduction, distribution or disclosure to third parties is strictly forbidden. ABB reserves all rights regarding intellectual Property Rights. Copyright 2018 ABB. All rights reserved.	FOR ADDITIONAL INFO REFER TO APPLIED PRACTICES UNLESS OTHERWISE SPECIFIED DIMENSIONS ARE IN INCHES	SIGNATURES MODEL GG DATE 04/21/03	TITLE ABB ATS POWER CIRCUIT & LAYOUT FIRST MADE FOR: ZBTSD(600-1200 AMP) (2 POLE) SIZE B CAGE CODE DWG NO 74A-2001 SCALE: NA SHEET 1 OF 5
	TOLERANCES ON: 2 PL. DECIMALS ± .020 3 PL. DECIMALS ± .005 ANGLES ± 1° FRACTIONS ± 1/64 FINISH ✓	CHECKED ENGRG FS MFG QUALITY ISSUED	
	DRAWING FILE: 74a-2001.dwg MODEL / ASSEMBLY FILE: ZBTSD(600-1200 AMP) (POLE)	# CTQs CRITICAL TO QUALITY CHARACTERISTIC	
	AutoCad Generated		

CONTROLS POWER SUPPLY (CPS) SCHEMATIC

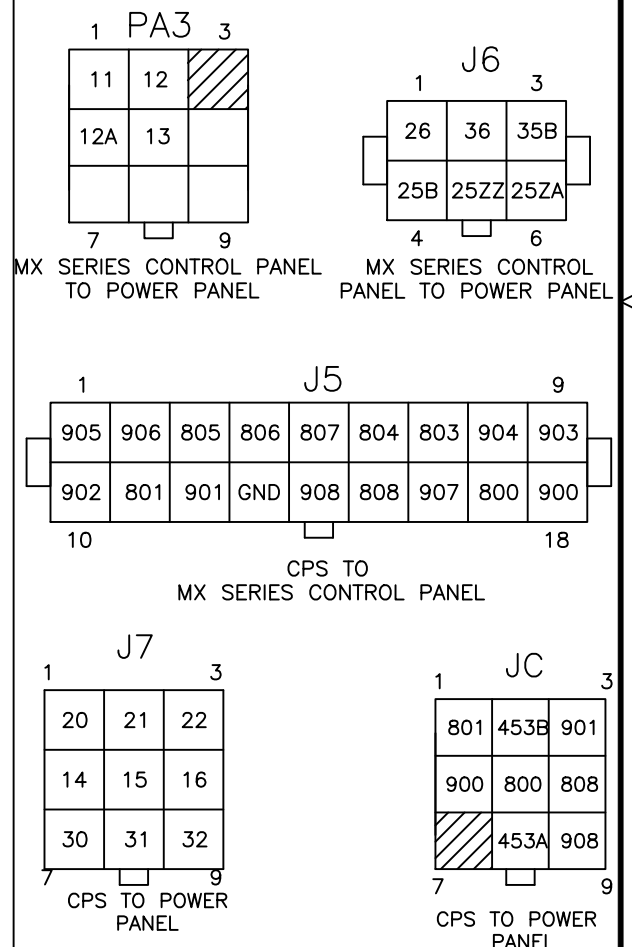
TO POWER CIRCUIT SCHEMATIC - SHEET 1



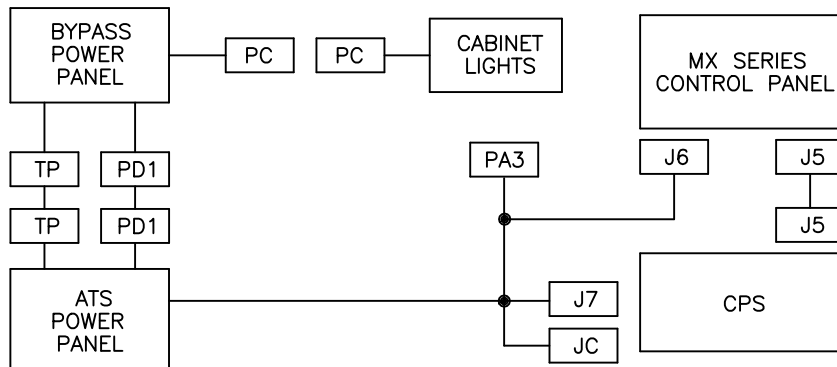
CONTROLS POWER SUPPLY (CPS)



INTERCONNECT PLUGS



INTERCONNECT PLUG DIAGRAM

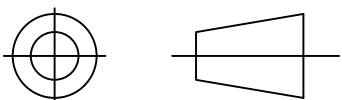


LEGEND

- WIRE CONNECTION
- * OPTIONAL
- *** WIRE #22 & 32 REMAIN WIRED IN CPS AND ARE NOT CONNECTED TO ATS

ABB PROPRIETARY AND CONFIDENTIAL INFORMATION
 The information contained in the document has to be kept strictly confidential.
 Any unauthorized use, reproduction, distribution or disclosure to third parties is strictly forbidden.
 ABB reserves all rights regarding intellectual Property Rights.
 Copyright 2018 ABB. All rights reserved

THIRD ANGLE PROJECTION



FOR ADDITIONAL INFO REFER TO APPLIED PRACTICES UNLESS OTHERWISE SPECIFIED DIMENSIONS ARE IN INCHES	SIGNATURES	DATE
TOLERANCES ON: 2 PL. DECIMALS ± .020 3 PL. DECIMALS ± .005 ANGLES ± 1° FRACTIONS ± 1/64	MODEL GG	05/05/03
FINISH ✓	DETAIL	
	CHECKED	
	ENGRG FS	
	MFG	
	QUALITY	
	ISSUED	
	DRAWING FILE: 74a-2001.dwg	
	MODEL / ASSEMBLY FILE: ZBTSD(600-1200AMP) (2 POLE)	
AutoCad Generated	# CTQs	CRITICAL TO QUALITY CHARACTERISTIC



TITLE
**CONTROLS POWER SUPPLY(CPS)
 & INTERCONNECT PLUGS**

FIRST MADE FOR: ZBTSD(600-1200AMP) (2 POLE)

SIZE B CAGE CODE DWG NO

74A-2001

SCALE: NA

SHEET 2 OF 5

OPERATION: BYPASS/ISOLATION SWITCH

AUTOMATIC

1. Manually operated Bypass Switch contacts (BN/BE) are open and ATS is supplying load.
2. Disconnect Switch (DS) is in "AUTO".

TO BYPASS ATS

1. Open bottom cabinet door and turn DS to "INHIBIT".
2. Turn Bypass Selector Switch (BSS) to same power source as ATS.
3. Move the Manual Bypass Handle (MBH) upward.

TO TEST ATS

1. Bypass per above instructions.
2. Rotate crank mechanism counterclockwise until ATS TEST light is illuminated.
3. Turn DS to "AUTO".
4. Test Switch (TS) on bottom cabinet door will allow electrical operation of ATS.

TO ISOLATE ATS

1. Bypass per above instructions.
2. Rotate crank mechanism counterclockwise until ATS ISOLATED light is illuminated.

TO REMOVE ATS

1. Bypass and Isolate per above instructions.
2. Disconnect multipin plugs and external connections to ATS.
3. Rotate four power panel latches to vertical position, slide ATS forward & lock mechanism in place.
4. ATS can now be removed from cabinet.

TO RECONNECT ATS

1. Place ATS in slide mechanism.
2. Unlock slide mechanism. Slide ATS over power panel latches and rotate latches to horizontal position.
3. Turn DS Switch to "INHIBIT".
4. Manually position ATS into same source as Bypass Switch.
5. Reconnect multipin plugs and external connections to ATS.
6. Rotate crank mechanism clockwise until ATS TEST light is illuminated.
7. Turn DS Switch to "AUTO" and use TS to electrically operate ATS.
8. Turn DS to "INHIBIT".
9. Rotate crank mechanism clockwise until ATS location pointer is aligned with "AUTO" mark on location indicator. (ATS must be in same source as Bypass).
10. Turn DS to "AUTO" and open Bypass with MBH.
11. ATS is now fully automatic (Figure 1).

NOTES:

1. DS in "INHIBIT" will prevent ATS electrical operation.
2. DO NOT use excessive force on mechanical handles.
3. Above Figures depict Bypass SOURCE 1. Sequence is same for Bypass SOURCE 2.
4. When ATS is in TEST or ISOLATE, Bypass Switch is a manual transfer switch to either available source. (Indicated on light panel).
5. To operate Bypass Switch when ATS is in TEST or ISOLATE:
 - a) Move MBH downward (to open Bypass Contacts BN/BE).
 - b) Turn BSS to opposite power source.
 - c) Move MBH upward to close into selected power source.

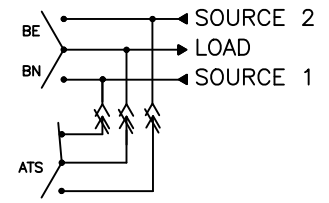


FIG. 1 BP IS OPEN WITH ATS IN SOURCE 1

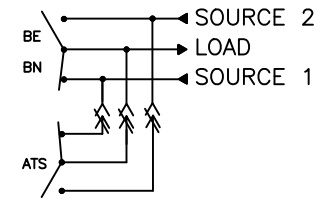


FIG. 2 BP IN SOURCE 1 WITH ATS IN SOURCE 1

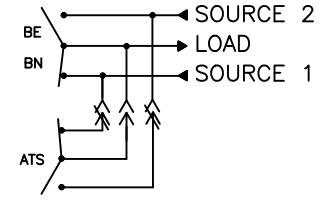


FIG. 3 BP IN SOURCE 1 WITH ATS IN TEST (LOAD CONNECTIONS ARE OPEN)

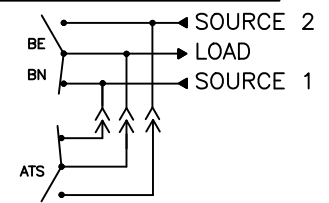


FIG. 4 BP IN SOURCE 1 WITH ATS ISOLATED

NOTES:

1. BP-Bypass switch (indicated by contacts BN/BE) is a 3 position switch.
2. ATS-Automatic Transfer Switch

LEGEND: BYPASS/ISOLATION SWITCH (BP)

I. (BP) BYPASS/ISOLATION SWITCH: MECHANICAL COMPONENTS

- N1,2,3(N).....SOURCE 1 Line connections_____
- E1,2,3(N).....SOURCE 2 Line connections_____
- T1,2,3(N)..... Load Line connections_____
- BE..... Bypass SOURCE 2 contacts
- BN..... Bypass SOURCE 1 contacts
- BSS..... Bypass Selector Switch
- MBH..... Manual Bypass Handle

II. (BP) BYPASS/ISOLATION: ELECTRICAL COMPONENTS

- AA-1,2,3.....Limit switch held actuated in Auto location of ATS, Non-actuated Test and Isolated locations.
- AB3-1,2,3,4.....Limit switch, actuated in Bypass SOURCE 2 position
- AB4-1,2.....Limit switch, actuated in Bypass SOURCE 1 position
- ACU,ACD..... Limit Switch actuated when crankhandle is engaged
- AE-1,2.....Limit switch, switches Engine Start from ATS control to bypass control during ATS Isolate
- AI-1,2,3.....Limit switch, actuated in Isolate location
- AT-1,2.....Limit switch, actuated in Test location
- ATR.....Auto/Test Relay. Energized in AUTO and TEST locations
- BR-1,2,3.....Bridge Rectifier
- C.....Capacitor: RNH
- CBC.....Crank Solenoid
- CBE.....SOURCE 2 Bypass Permissive Solenoid
- CBN.....SOURCE 1 Bypass Permissive Solenoid
- D1.....Diode
- R1.....Resistor: RNH
- RNH.....Relay normally held, 24 VDC coil, 3PDT
- XBE.....SOURCE 2 line control transformer
- XBN.....SOURCE 1 line control transformer

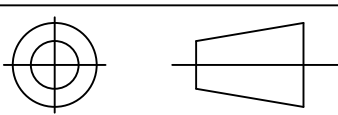
III. (BP) BYPASS/ISOLATION SWITCH: INDICATOR LIGHTS

- LNA.....SOURCE 1 available
- LEA.....SOURCE 2 available
- LBN (NOTE 1).....Bypass SOURCE 1 (BN closed)
- LBE (NOTE 1).....Bypass SOURCE 2 (BE closed)
- LAT (NOTE 1).....ATS in Test location
- LAI (NOTE 1).....ATS in Isolate location
- LIT (NOTE 1).....ATS Inhibit
- LDS (NOTE 1).....ATS DS switch in INHIBIT position

NOTES:

1. Indicator off during automatic operation of ATS.
2. Four pole includes neutral lugs.

ABB PROPRIETARY AND CONFIDENTIAL INFORMATION The information contained in the document has to be kept strictly confidential. Any unauthorized use, reproduction, distribution or disclosure to third parties is strictly forbidden. ABB reserves all rights regarding intellectual Property Rights. Copyright 2018 ABB. All rights reserved.	FOR ADDITIONAL INFO REFER TO APPLIED PRACTICES UNLESS OTHERWISE SPECIFIED DIMENSIONS ARE IN INCHES	SIGNATURES MODEL GG DETAIL	DATE 04/21/03	<p style="font-size: 16px; font-weight: bold; margin: 0;">BYPASS ISOLATION LEGEND & OPERATION</p> <p style="font-size: 10px; margin: 0;">FIRST MADE FOR: ZBTSD(600-1200 AMP) (2 POLE)</p>	
	TOLERANCES ON: 2 PL. DECIMALS ± .020 3 PL. DECIMALS ± .005 ANGLES ± 1° FRACTIONS ± 1/64	CHECKED ENGRG FS MFG QUALITY ISSUED	SIZE B		CAGE CODE DWG NO
	FINISH ✓	DRAWING FILE: 74a-2001.dwg MODEL / ASSEMBLY FILE: ZBTSD(600-1200 AMP) (2 POLE)	74A-2001		SCALE: NA
	AutoCad Generated	# CTQs CRITICAL TO QUALITY CHARACTERISTIC	SHEET		3 OF 5



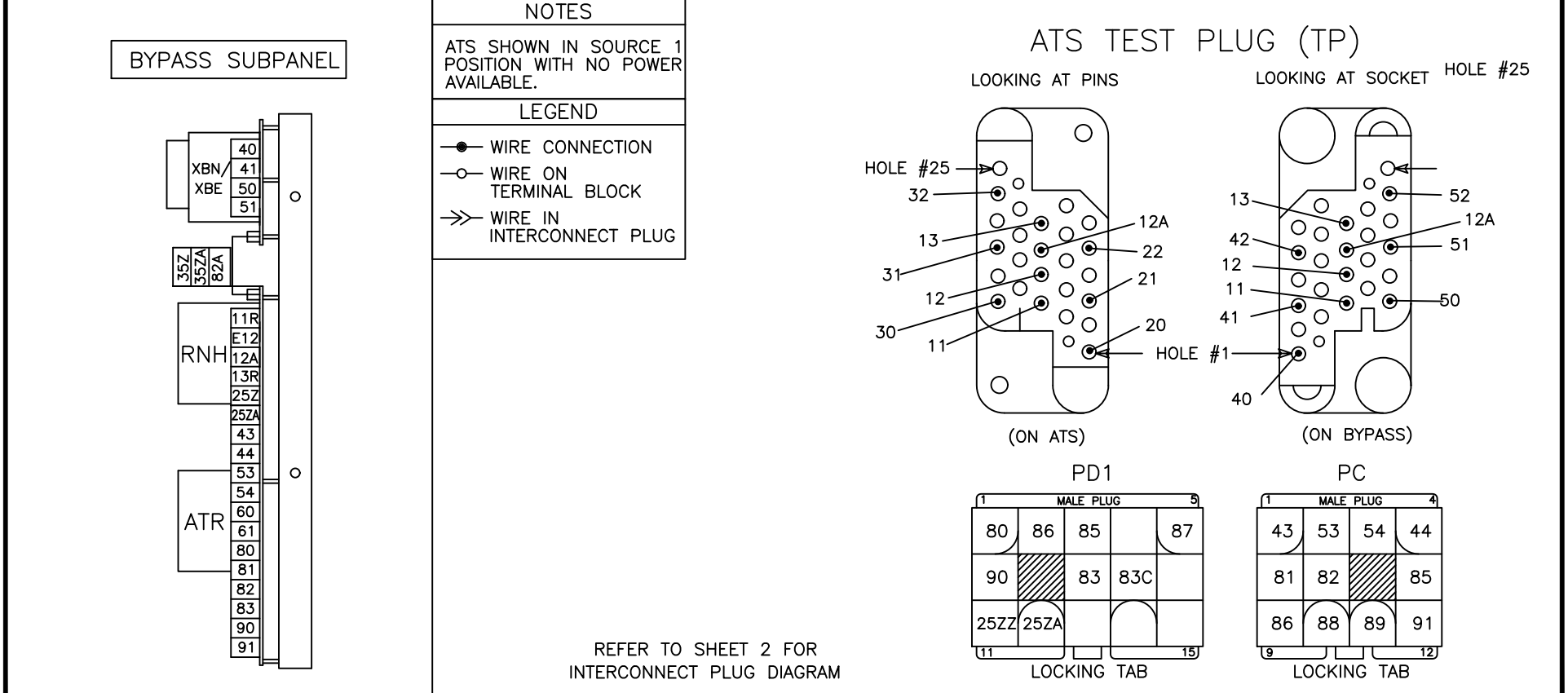
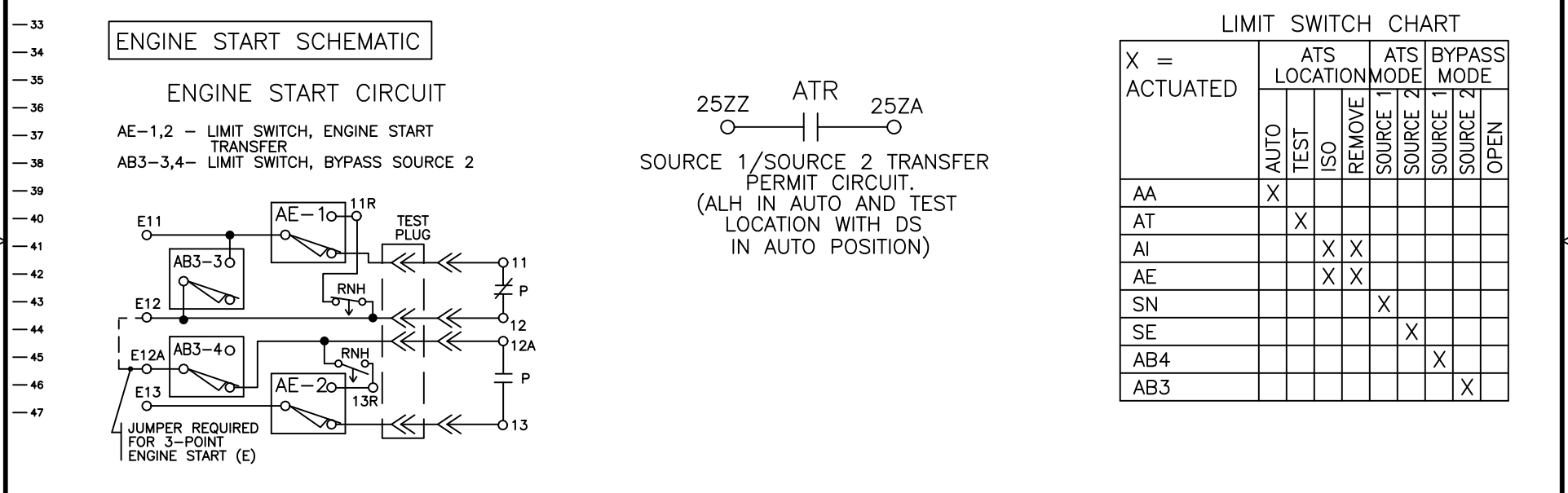
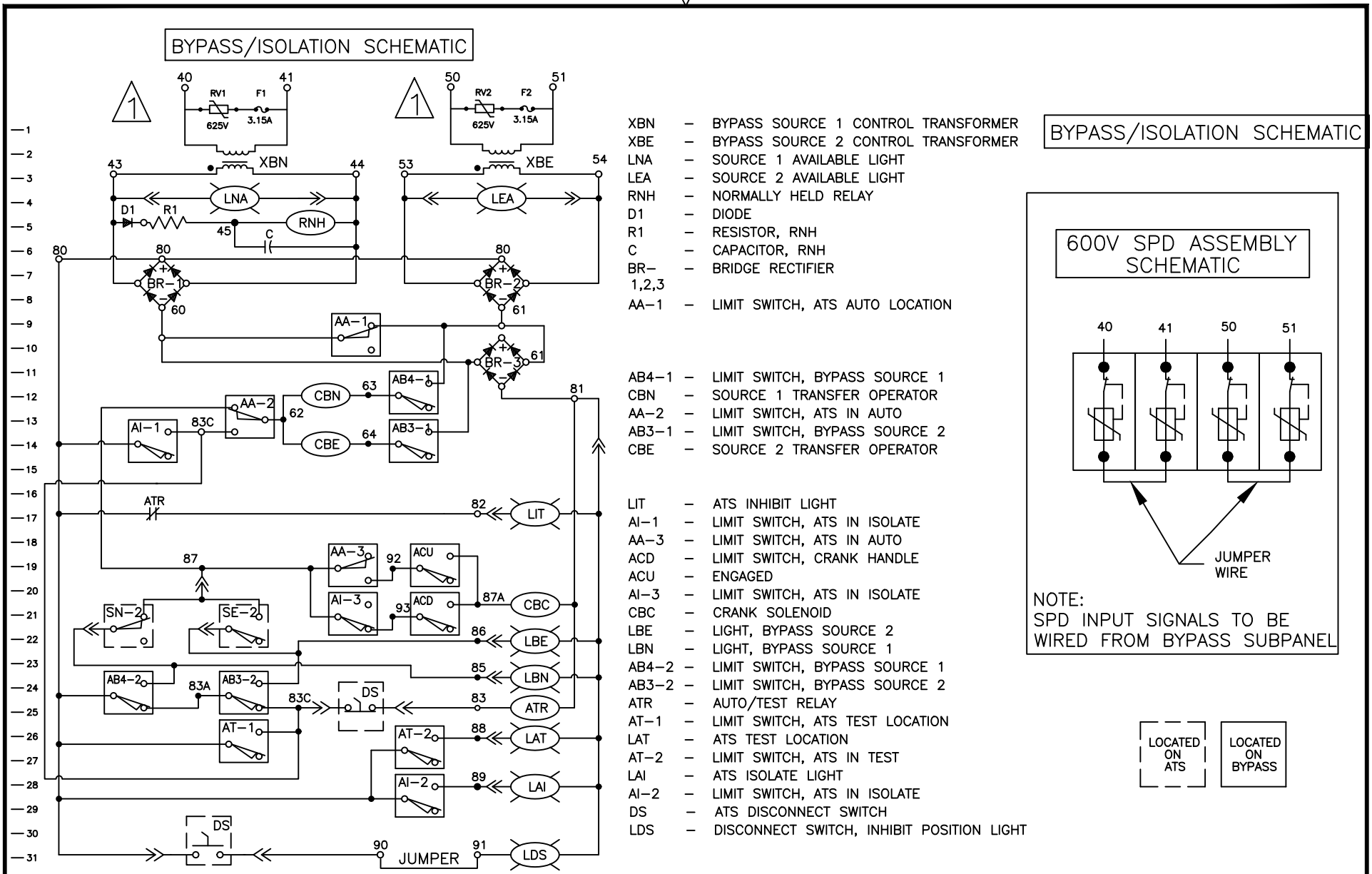


ABB PROPRIETARY AND CONFIDENTIAL INFORMATION

The information contained in the document has to be kept strictly confidential. Any unauthorized use, reproduction, distribution or disclosure to third parties is strictly forbidden. ABB reserves all rights regarding intellectual Property Rights. Copyright 2018 ABB. All rights reserved.

THIRD ANGLE PROJECTION

FOR ADDITIONAL INFO REFER TO APPLIED PRACTICES UNLESS OTHERWISE SPECIFIED DIMENSIONS ARE IN INCHES

TOLERANCES ON:
 2 PL. DECIMALS ± .020
 3 PL. DECIMALS ± .005
 ANGLES ± 1°
 FRACTIONS ± 1/64

FINISH ✓

AutoCad Generated

SIGNATURES

MODEL GG

DATE 04/21/03

CHECKED

ENGRG FS

MFG

QUALITY

ISSUED

DRAWING FILE: 74a-2001.dwg

MODEL / ASSEMBLY FILE:

CTQs

CRITICAL TO QUALITY CHARACTERISTIC

DATE

04/21/03

TITLE

BYPASS/ISOLATION SCHEMATIC & PLUGS

FIRST MADE FOR: ZBTS DL60-120 (600-1200 AMP) (2 POLE)

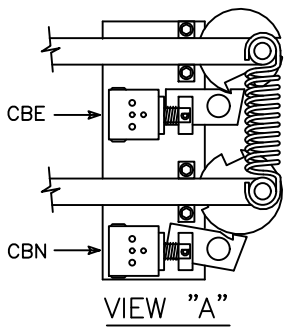
SIZE B CAGE CODE DWG NO

74A-2001

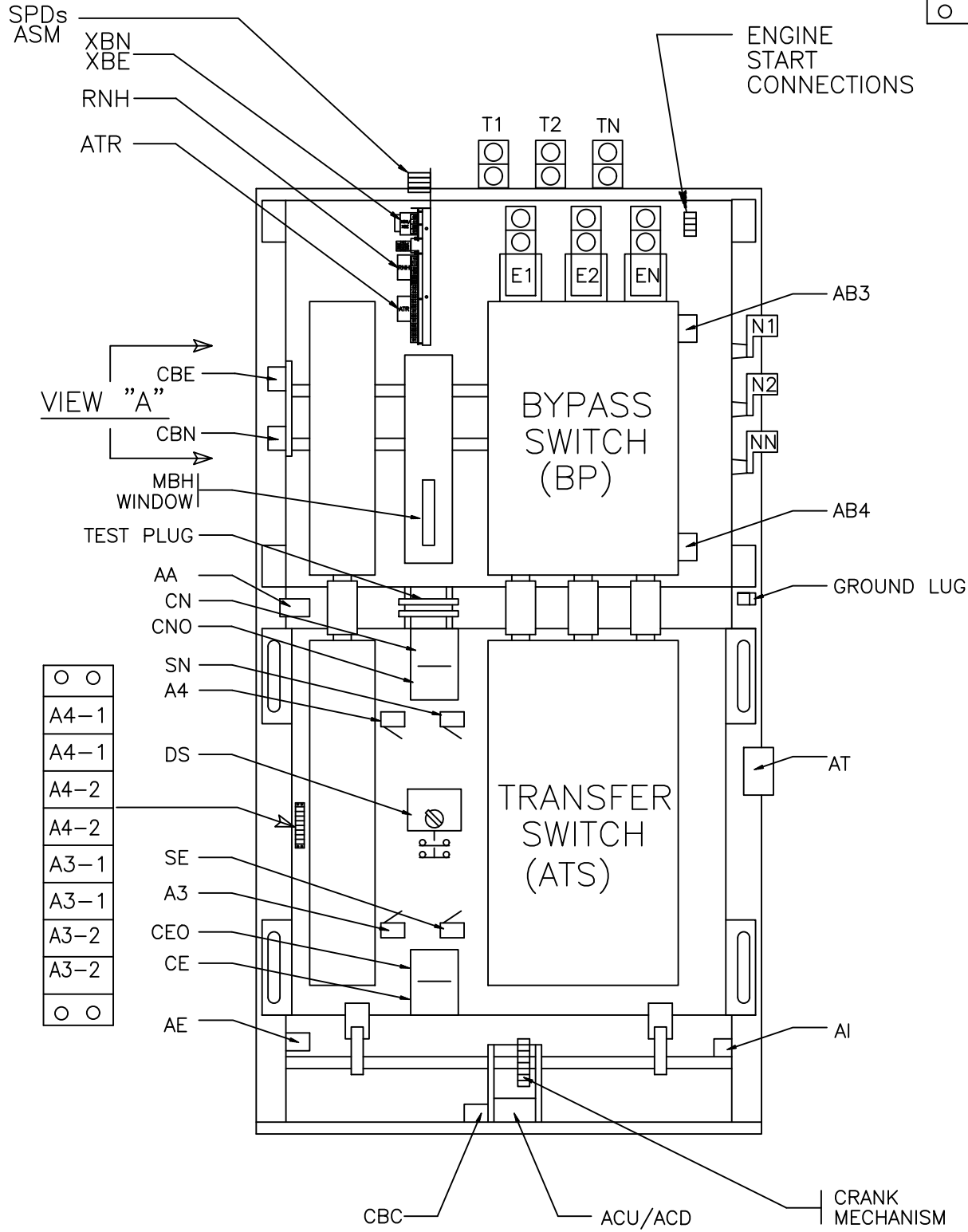
SCALE: NA SHEET 4 OF 5



BYPASS/ISOLATION TRANSFER SWITCH



- ○
- E11
- E12
- E12A
- E13
- ○

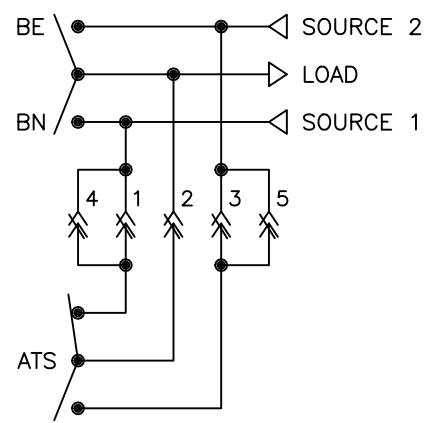


- ○
- A4-1
- A4-1
- A4-2
- A4-2
- A3-1
- A3-1
- A3-2
- A3-2
- ○

WIRE NUMBERING CHART

LIMIT SWITCHES	C	NC	NO
AA-1	60		61
AA-2	62	83C	87
AA-3	87	92	
AB3-1	64		60
AB3-2	83A	83C	86
AB3-3	E12		E11
AB3-4	E12A	12A	
AB4-1	63		61
AB4-2	80	83A	85
ACD	93		87A
ACU	92		87A
AE-1	E11	11	11R
AE-2	E13	13	13R
AI-1	80		83C
AI-2	80		89
AI-3	87	93	
AT-1	80		83C
AT-2	80		88
SE-2	86		87
SN-2	85		87

BYPASS/ISOLATION DIAGRAM



ATS LOCATION	LOAD CARRYING CONTACTS			ATS TEST PLUG (TP)	
	1	2	3	4	5
AUTO	X	X	X	X	X
TEST	0	0	0	X	X
ISOLATE	0	0	0	0	0

X = CLOSED
0 = OPEN

NOTES

ATS SHOWN IN SOURCE 1 POSITION WITH NO POWER AVAILABLE.

ABB PROPRIETARY AND CONFIDENTIAL INFORMATION

The information contained in this document has to be kept strictly confidential. Any unauthorized use, reproduction, distribution or disclosure to third parties is strictly forbidden. ABB reserves all rights regarding intellectual Property Rights. Copyright 2018 ABB. All rights reserved.

THIRD ANGLE PROJECTION

FOR ADDITIONAL INFO REFER TO	SIGNATURES	DATE
APPLIED PRACTICES	MODEL GG	04/21/03
UNLESS OTHERWISE SPECIFIED DIMENSIONS ARE IN INCHES	DETAIL	
TOLERANCES ON:	CHECKED	
2 PL. DECIMALS ± .020	ENGRG FS	
3 PL. DECIMALS ± .005	MFG	
ANGLES ± 1°	QUALITY	
FRACTIONS ± 1/64	ISSUED	
FINISH ✓	DRAWING FILE: 74a-2001.dwg	
AutoCad Generated	MODEL / ASSEMBLY FILE: ZBTSDL60-120 (600-1200 AMP) (2 POLE)	
# CTQs	⊖ CRITICAL TO QUALITY CHARACTERISTIC	

ABB

TITLE
BYPASS/ISOLATION TRANSFER SWITCH

FIRST MADE FOR: ZBTSDL60-120 (600-1200 AMP) (2 POLE)

SIZE	CAGE CODE	DWG NO
B		74A-2001

SCALE: NA SHEET 5 OF 5