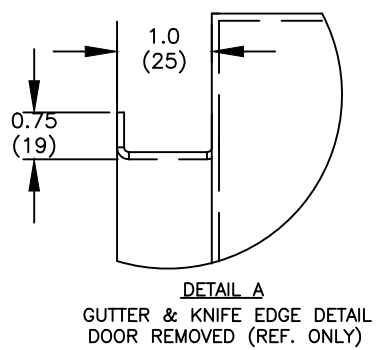
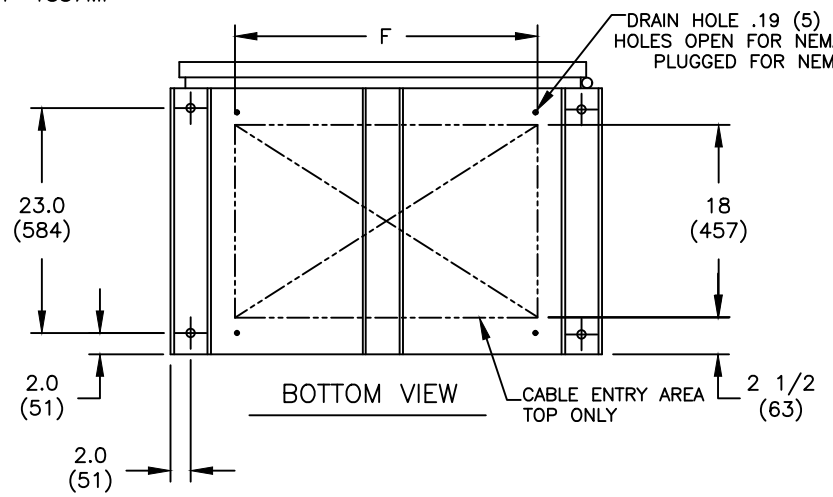


2(51)x4(102)x2(51)
10 GA. .134(3) REF.
WELDED STEEL CHANNELS
(DOOR LATCHES NOT SHOWN)

3 REQUIRED ON F-1884MP, F-1885MP, F-1886MP
4 REQUIRED ON F-1887MP



REVISIONS			
REV.	DESCRIPTION	DATE	APPROVED
1	CO76899 UPDATED REBRANDING	10/14/19	AR MAS

ZBTECT SWITCHES	CONTROLLER TYPE	NO. POLES	ENCLOSURE PART #	LUG RANGE	WIRE BENDING SPACE	
					P(EMERG)	R(NORMAL)
100-400 AMP	MX-350	2,3	F-1884MP	(QTY 1) #4-600 MCM (33-304mm ²)	17 7/8 (454)	31 (787)
		4	F-1885MP			26 3/4 (679)

ZBTE(D/CT) SWITCHES	CONTROLLER TYPE	NO. POLES	NEMA(3R) CABINET	LUG RANGE	WIRE BENDING SPACE	
					P(EMERG)	R(NORMAL)
600 AMP	MX-350	2,3	F-1884MP	(QTY 2) #2-600 MCM (33-304mm ²)	17 7/8 (454)	31 (787)
		4	F-1885MP			26 3/4 (679)
800-1200 AMP	MX-350	2,3	F-1886MP	(QTY 4) #2-600 MCM (33-304mm ²)	17 7/8 (454)	29 1/4 (743)
		4	F-1887MP			24 3/4 (629)

CABINET DIMENSIONS				
CABINET	A	B	C	F
F-1884MP	88 (2235)	36 (914)	28 1/4 (737)	24 (609)
F-1885MP	88 (2235)	40 (1016)	28 1/4 (737)	28 (711)
F-1886MP	88 (2235)	40 (1016)	28 1/4 (737)	28 (711)
F-1887MP	88 (2235)	46 (1168)	28 1/4 (737)	34 (863)

NOTES:

- MATERIAL: 10 GA. STEEL .134(3) REF. UNLESS OTHERWISE NOTED.
- FINISH: PER F-7000
- LOAD AND EMERGENCY LUG CONNECTIONS AT TOP OF BYPASS SWITCH. NORMAL LUG CONNECTIONS ON RIGHT SIDE OF MOUNTING FRAME.
- ALL CABLES MUST ENTER IN TOP WIRING AREA OF CABINET ABOVE BYPASS SWITCH. NO CABLE ENTRY ALLOWED IN BOTTOM OF CABINET.
- ADDITIONAL REAR BAY AVAILABLE FOR BOTTOM CABLE ENTRY. CONSULT FACTORY.
- ALL DIMENSIONS ARE FOR REFERENCE ONLY AND SHOWN IN INCHES(MILLIMETERS).
- CONSTRUCTION PER UL 1008.
- FOR INSTALLATION, REFER TO SHEET NO. 2.

SIGNATURES		DATE	TITLE
MODEL	SG	01/15/08	
DETAIL			
CHECKED			
ENGRG			
MFG			
QUALITY			
ISSUED			FIRST MADE FOR: ZBTE(D) 600-1200A & ZBTECT 100-1200A NEMA 3R, 4, 12
DRAWING FILE:	90c-1008.dwg	SIZE	CAGE CODE
MODEL / ASSEMBLY FILE:	ZBTE(D) 600-1200 AMP & ZBTECT 100-1200 AMP	B	DWG NO
# CTQs	⊖ CRITICAL TO QUALITY CHARACTERISTIC	90C-1008	
AutoCad Generated		SCALE: N/A	SHEET 1 OF 2

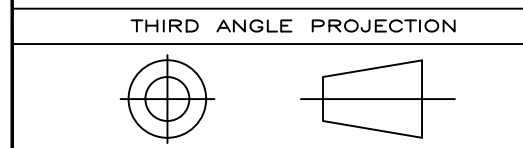
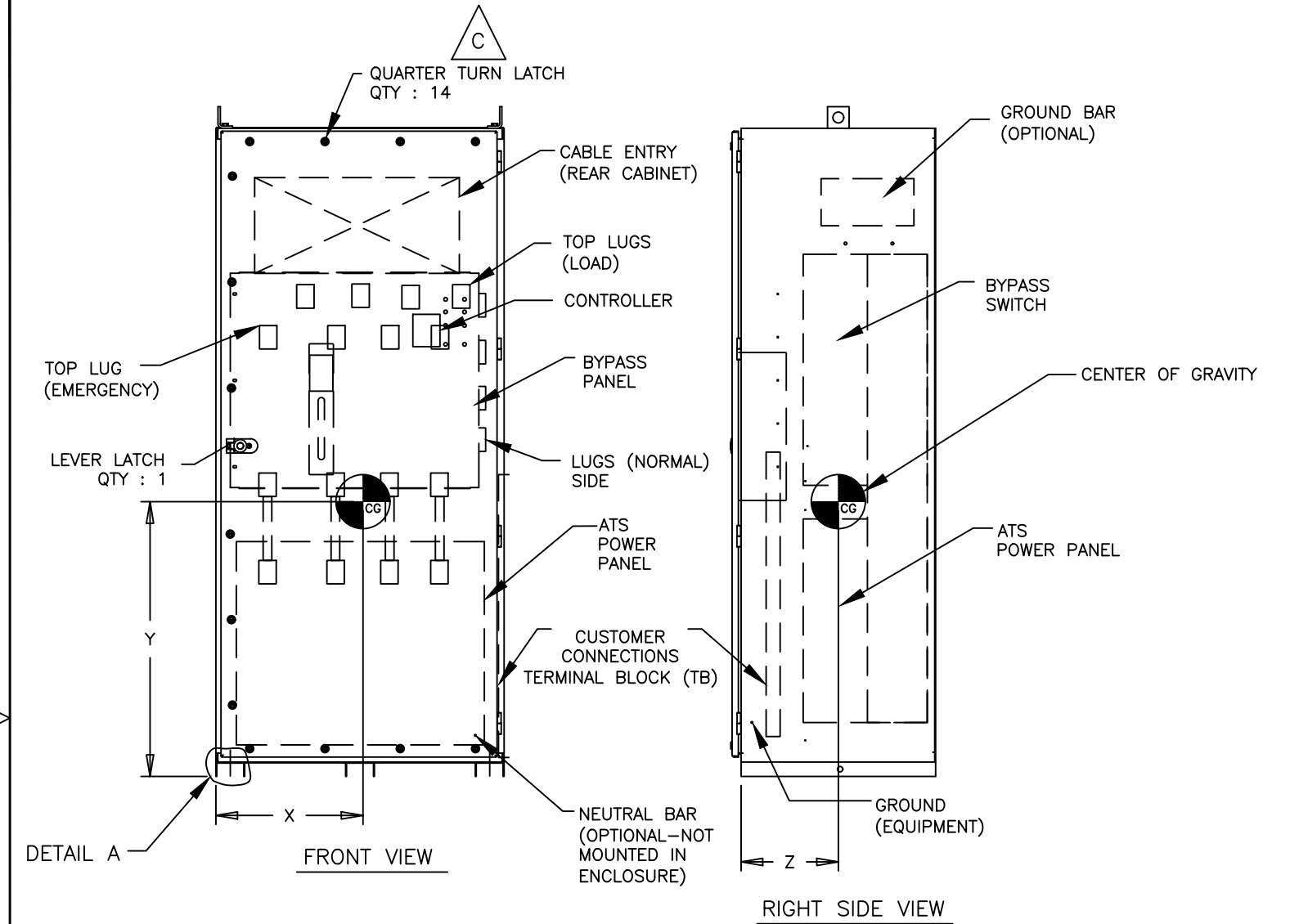


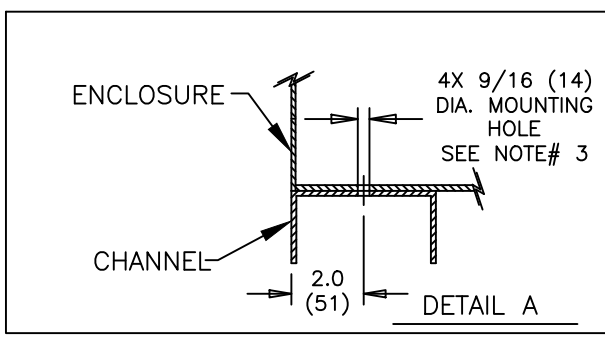
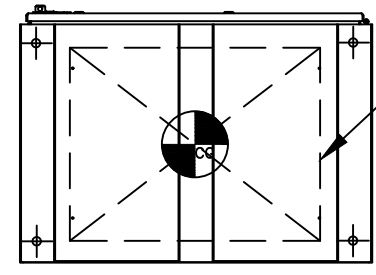
ABB PROPRIETARY AND CONFIDENTIAL INFORMATION
The information contained in the document has to be kept strictly confidential.
Any unauthorized use, reproduction, distribution or disclosure to third parties is strictly forbidden.
ABB reserves all rights regarding intellectual Property Rights.
Copyright 2018 ABB. All rights reserved

AutoCad Generated



NOTES:

- ALL DIMENSIONS ARE FOR REFERENCE ONLY AND SHOWN IN INCHES (MILLIMETERS).
 - SEISMIC DATA OF MOST VULNERABLE ATS CONSTRUCTION WITHIN SERIES.
- | | |
|---|---------------------------------|
| MAXIMUM DEFLECTION AT TOP OF GEAR: | $d_{ss}=1.41$ INCHES (36 mm) |
| | $d_{fb}=0.67$ INCHES (17 mm) |
| QUALIFIED BY: TIME HISTORY SHAKE TABLE TEST
IEEE-693-2005-HIGHx2.5 (64 mm)
IBC-2003-300%G | |
| RESONANCE FREQUENCIES: | $f_{ss}=7.0$ Hz |
| | $f_{fb}=10.2$ Hz |
| | $f_v > 33.0$ Hz |
| MAXIMUM REACTION TO ANY BOLT: | $V_{ss}=788$ LBS (358 KG) SHEAR |
| (DEAD LOAD +/- SEISMIC) | $V_{fb}=788$ LBS (358 KG) SHEAR |
| | $T_v=3170$ LBS (1441 KG) UP |
| | $P_v=3787$ LBS (1721 KG) DOWN |
- BOLT ENCLOSURE FROM C-CHANNEL BASE (SEE DETAIL A) USING THE FOLLOWING SEISMIC CERTIFIED MOUNTING HARDWARE PER MOUNTING HOLE:
(HARDWARE PROVIDED BY INSTALLER).
 - 1/2-13 GRADE 5 BOLT TORQUE TO 75 FT-LBS. (102 NEWTON METERS).
 - US STANDARD HIGH STRENGTH ZINC-PLATED FLAT WASHER 5/8 (16) I.D. AND 1-1/2 (38) O.D.
 - 1/2 (13) HELICAL SPRING LOCK WASHER.
 - CENTER OF GRAVITY DIMENSIONS ARE FOR REFERENCE ONLY.
 - LOAD AND EMERGENCY LUG CONNECTIONS AT TOP OF BYPASS SWITCH. NORMAL LUG CONNECTIONS ON RIGHT SIDE OF MOUNTING FRAME.
ALL CABLES MUST ENTER IN TOP WIRING AREA OF CABINET ABOVE BYPASS SWITCH. NO CABLE ENTRY ALLOWED IN BOTTOM OF CABINET.
 - SWITCH SUPPLIED WITH STANDARD MECHANICAL LUG.
REFER TO SHEET 1 FOR LUG DETAILS
 - ALL CONTROL WIRES (18-12 AWG) MUST BE TORQUED TO 19 in-lbs. (2 N-m)
 - LUG TORQUE ARE APPLICABLE FOR CU & AL CABLES.
 - FOR WORKING CLEARANCE REFER TO NATIONAL AND LOCAL CODES AND STANDARDS.
 - REMOVE THE PLUGS FROM BOTTOM OF ENCLOSURE FOR SEISMIC MOUNTING.
 - NEMA 4 AND 12 ENCLOSURE TYPE ATS WILL COME WITH WINDOW KIT (NOT SHOWN).



SOCKET SIZE ACROSS FLATS	TORQUE	
	Lb-Ft	N-m
1/8	4	5.4
5/32	8	10.9
3/16	10	13.6
7/32	12	16.3
1/4	17	23.1
5/16	23	31.2
3/8	31	42.1
1/2	42	57.0
9/16	50	67.9

AMP	POLE	WEIGHT LB(kg)	CENTER OF GRAVITY in(mm)		
			X	Y	Z
600	3	1455(660)	18.0	36.0	18.0
	4	1560(708)	(457)	(914)	(457)
800-1200	3	1505(683)	21.0	36.0	18.0
	4	1610(730)	(533)	(914)	(457)

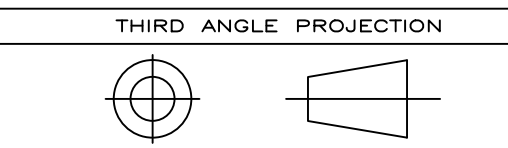


ABB PROPRIETARY AND CONFIDENTIAL INFORMATION
 The information contained in the document has to be kept strictly confidential.
 Any unauthorized use, reproduction, distribution or disclosure to third parties is strictly forbidden.
 ABB reserves all rights regarding intellectual Property Rights.
 Copyright 2018 ABB. All rights reserved

AutoCad Generated

SIGNATURES		DATE
MODEL	SG	01/15/08
DETAIL		
CHECKED		
ENGRG		
MFG		
QUALITY		
ISSUED		
DRAWING FILE:	90c-1008-.dwg	
MODEL / ASSEMBLY FILE:	ZBTE(D) 600-1200 AMP & ZBTECT 100-1200 AMP	
# CTQs	⊖ CRITICAL TO QUALITY CHARACTERISTIC	

ABB

TITLE
ZBTE(D) & ZBTECT
INST. DWG. NEMA 3R, 4 & 12

FIRST MADE FOR: ZBTE(D) 600-1200A & ZBTECT 100-1200A NEMA 3R, 4, 12

SIZE	B	CAGE CODE	DWG NO
			90C-1008

SCALE: N/A SHEET 2 OF 2

