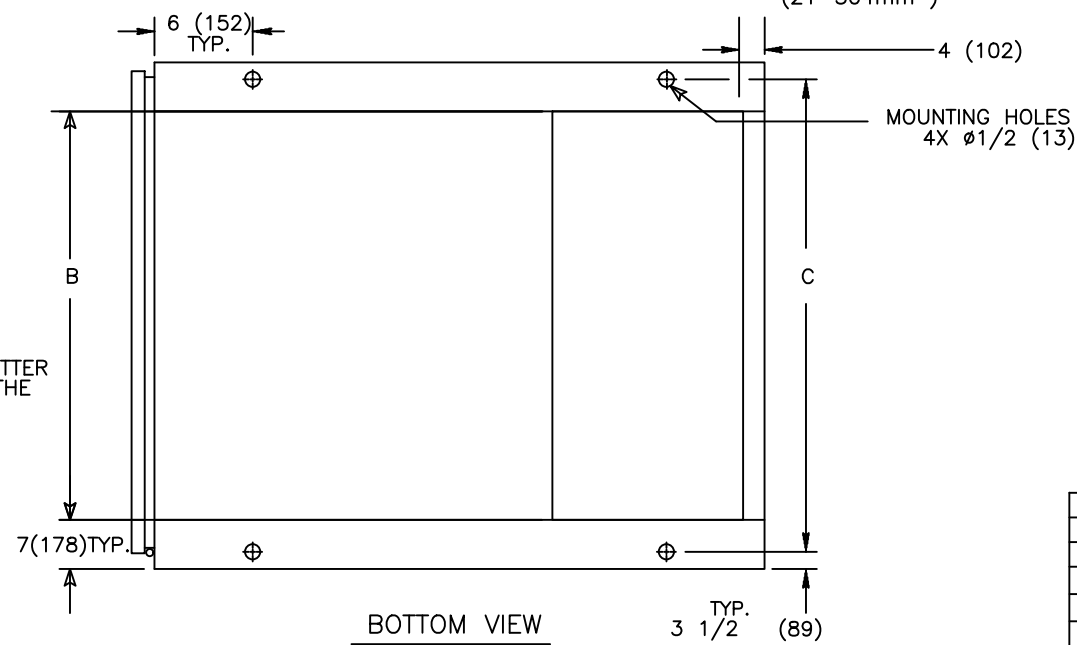


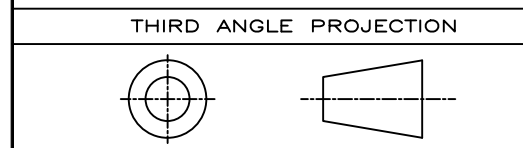
REVISIONS			
REV.	DESCRIPTION	DATE	APPROVED
1	CO76899 UPDATED REBRANDING	10/14/19	AR MAS

**NOTES:**

1. MATERIAL: 10 GA. STEEL .134(3) REF.
2. FINISH: PER F-7000.
3. ALL CABLE ENTRY IN REAR OF CABINET.
4. WIRING BENDING AND GUTTER SPACES MEASURED AT POINT OF CONNECTION TO LUGS. LUGS ARE SUPPLIED AS OPTION ONLY.
5. ALL DIMENSIONS ARE FOR REFERENCE ONLY AND SHOWN IN INCHES(MILLIMETERS).
6. ALL HANDLING AND MOVEMENT OF CABINET MUST BE DONE IN THE UPRIGHT POSITION ONLY.
7. ALL SIDE AND REAR DOOR/PANELS SHALL HAVE GUTTER AND KNIFE EDGE FLANGES, AND HAVE HINGES ON THE RIGHT HAND SIDE.
8. CONSTRUCTION PER UL 1008
9. FOR INSTALLATION, REFER TO SHEET # 3.

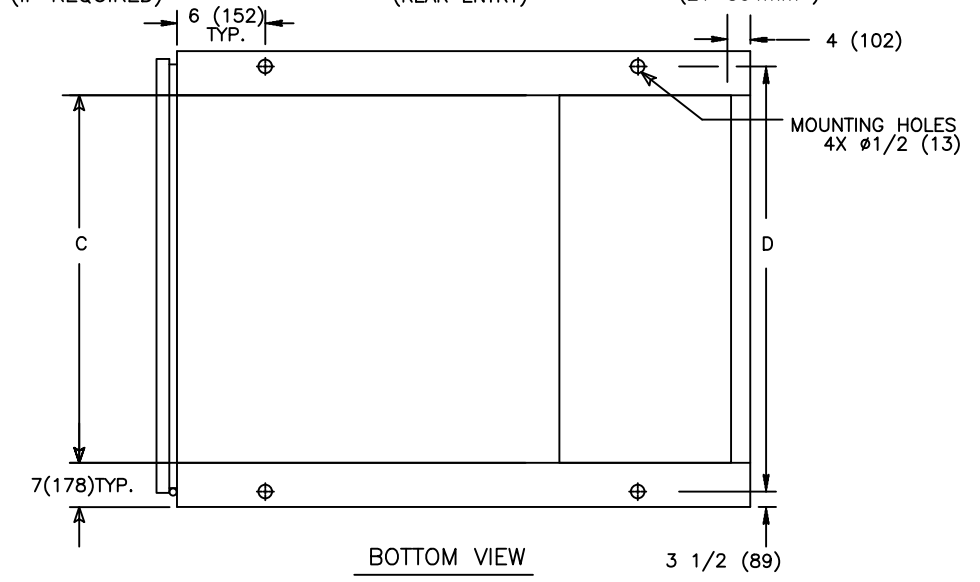
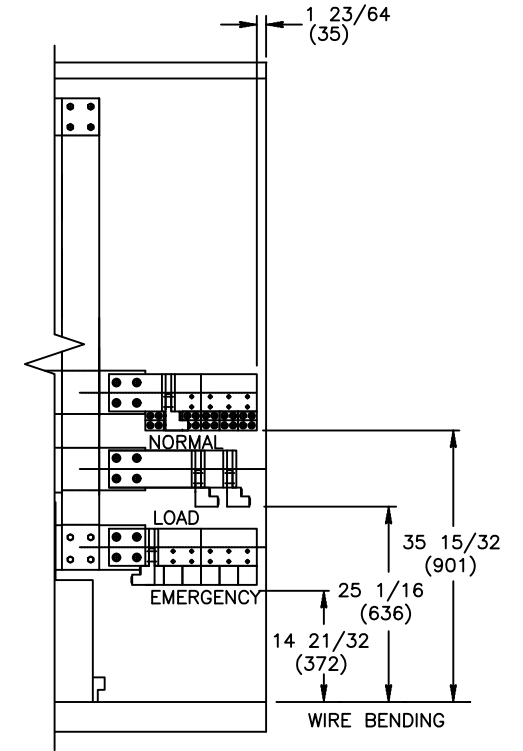
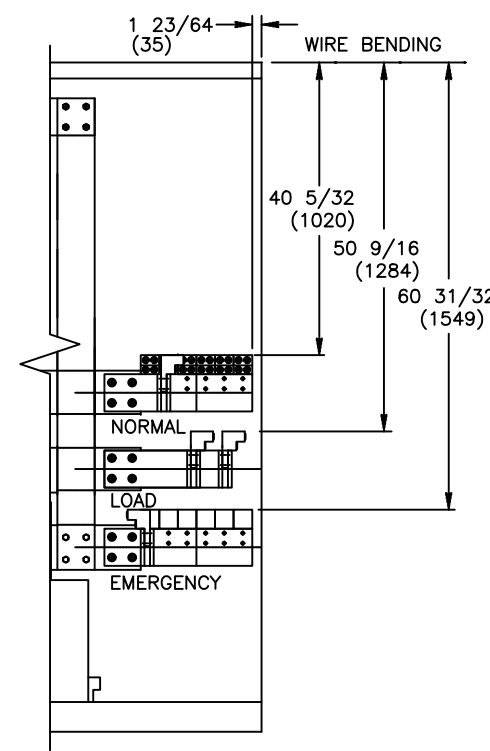
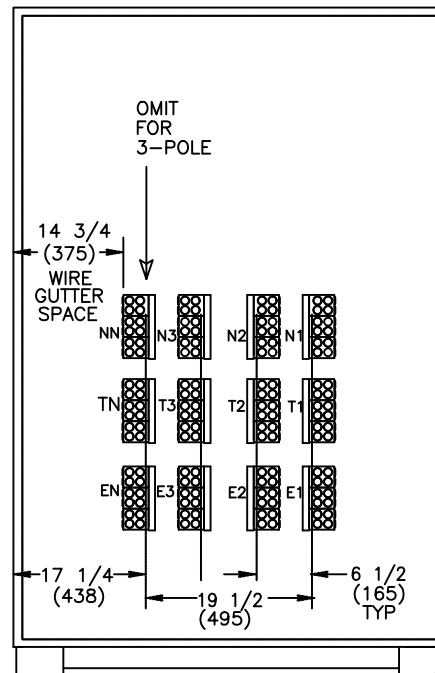
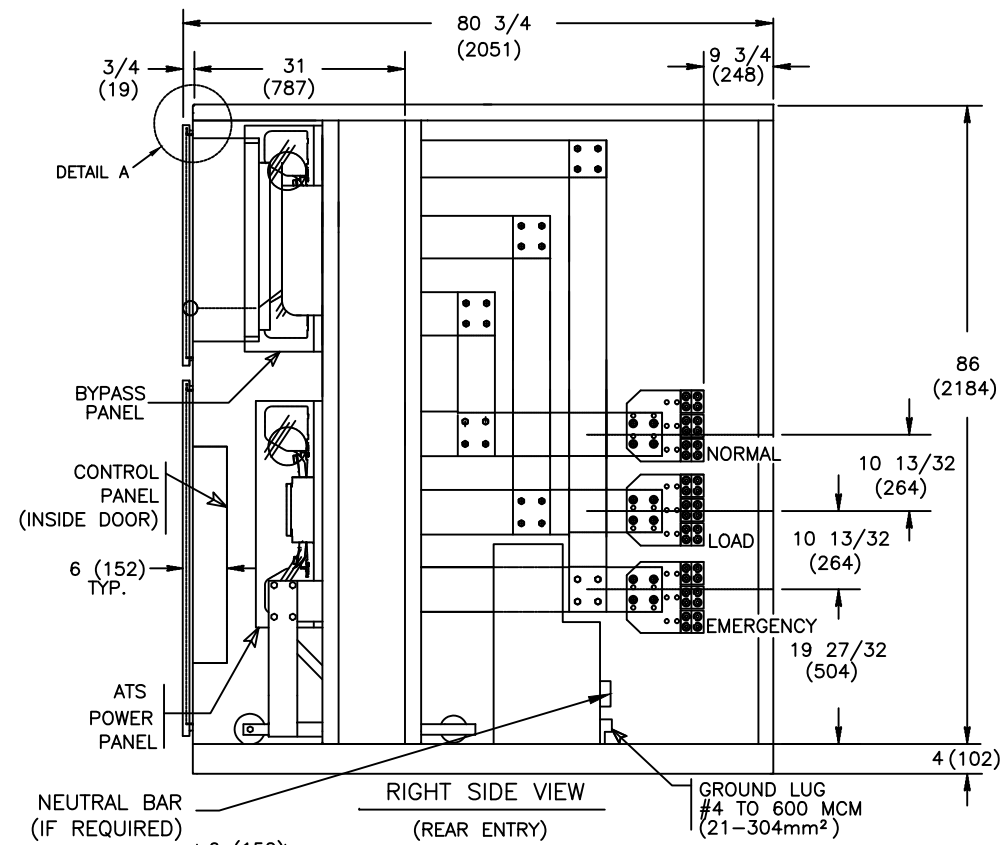


ZBTE(D/CT)	SCHEDULE		
	ENCLOSURE PART#	POLES	A B C
4000 AMP	F-1858MP	3	47 1/2 (1206) 33 1/2 (851) 40 1/2 (1029)
	F-1859MP	4	54 (1372) 40 (1016) 47 (1194)



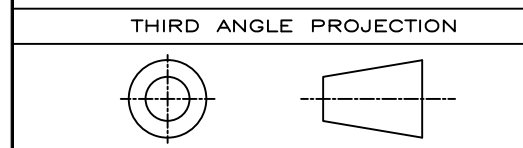
**ABB PROPRIETARY AND CONFIDENTIAL INFORMATION**  
 The information contained in the document has to be kept strictly confidential. Any unauthorized use, reproduction, distribution or disclosure to third parties is strictly forbidden. ABB reserves all rights regarding intellectual Property Rights. Copyright 2018 ABB. All rights reserved.

SIGNATURES		DATE	<b>ABB</b>
MODEL	AMG	01/15/08	
DETAIL			
CHECKED			
ENGRG			
MFG			
QUALITY			TITLE
ISSUED			ZBTE(D/CT) 4000 AMP DIMENSIONAL DWG. NEMA-1
DRAWING FILE:	90c-1019.dwg	FIRST MADE FOR:	ZBTE(D/CT) 4000 AMP NEMA 1 ENCLOSURE
MODEL / ASSEMBLY FILE:	ZBTE(D/CT) 4000 AMP	SIZE	B
# CTQs	⊖ CRITICAL TO QUALITY CHARACTERISTIC	CAGE CODE	
AutoCad Generated		DWG NO	90C-1019
		SCALE:	N/A
		SHEET	1 OF 3




**IMPORTANT NOTE:**  
LUGS ARE SUPPLIED AS OPTIONAL ACCESSORY ONLY. SHOWN AS REFERENCE ONLY.

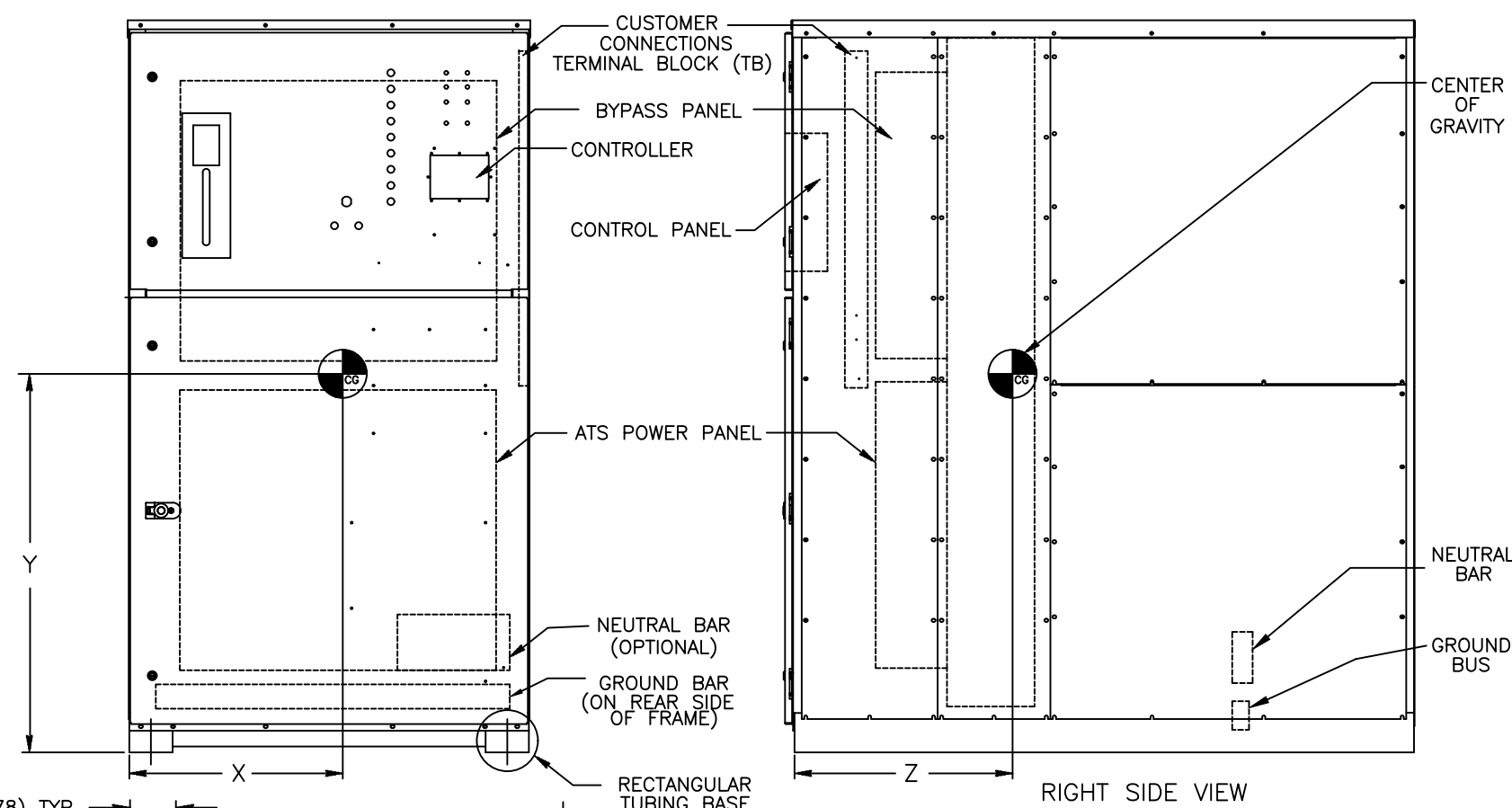
**NOTE:**  
1. FOR INSTALLATION, REFER TO SHEET NO. 3.



**ABB PROPRIETARY AND CONFIDENTIAL INFORMATION**  
The information contained in the document has to be kept strictly confidential. Any unauthorized use, reproduction, distribution or disclosure to third parties is strictly forbidden. ABB reserves all rights regarding intellectual Property Rights. Copyright 2018 ABB. All rights reserved.

SIGNATURES		DATE		 <b>ZBTE(D/CT) 4000 AMP DIMENSIONAL DWG. NEMA-1</b>	
MODEL	AMG	01/15/08			
DETAIL					
CHECKED					
ENGRG					
MFG				TITLE	
QUALITY				FIRST MADE FOR: ZBTE(D/CT) 4000 AMP NEMA 1 ENCLOSURE w/LUG	
ISSUED				SIZE CAGE CODE DWG NO	
DRAWING FILE: 90c-1019.dwg		B		90C-1019	
MODEL / ASSEMBLY FILE: ZBTE(D/CT) 4000 AMP					
# CTQs	⊖ CRITICAL TO QUALITY CHARACTERISTIC	SCALE: N/A		SHEET 2 OF 3	

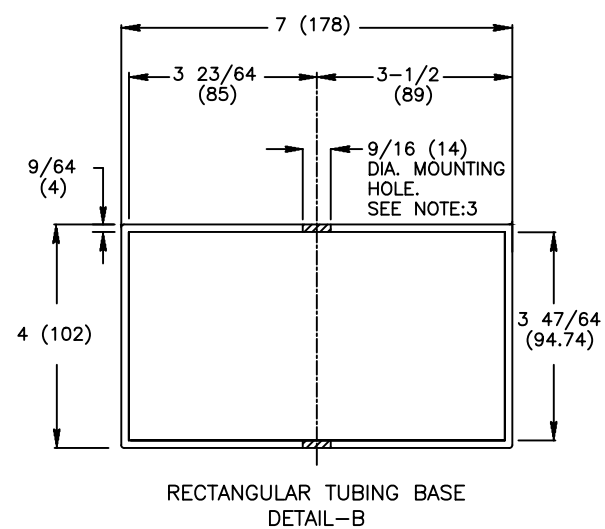
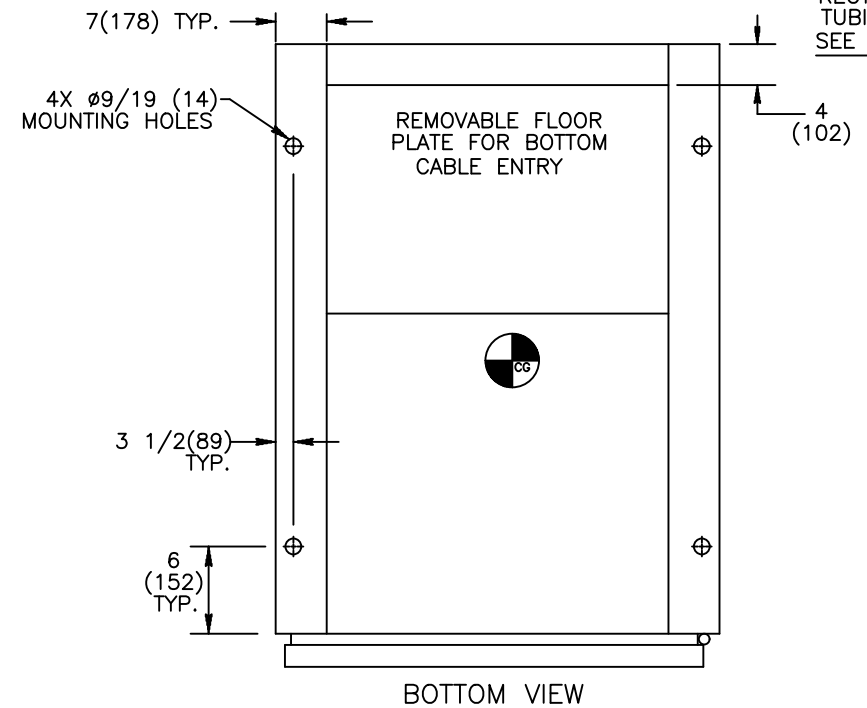
AutoCad Generated



**NOTES:**

- ALL DIMENSIONS ARE FOR REFERENCE ONLY AND SHOWN IN INCHES (MILLIMETERS).
- SEISMIC DATA OF MOST VULNERABLE ATS CONSTRUCTION WITHIN ITS PLATFORM:
 

MAXIMUM DEFLECTION AT TOP OF GEAR:	dss=0.98 INCHES (25 mm)
	dfb=0.21 INCHES (4 mm)
QUALIFIED BY:	TIME HISTORY SHAKE TABLE TEST
	IEEE-693-2005-HIGHx2.5 (64 mm)
	IBC-2003-300%G
RESONANCE FREQUENCIES:	fss=8.6 Hz
	ffb=21.0 Hz
	fv>33.0 Hz
MAXIMUM REACTION TO ANY BOLT:	Vss=5400 LBS (2449 KG) SHEAR
(DEAD LOAD +/- SEISMIC)	Vfb=5400 LBS (2449 KG) SHEAR
	Tv=12251 LBS (5557 KG) UP
	Pv=16492 LBS (7480 KG) DOWN
- BOLT ENCLOSURE FROM RECTANGULAR TUBING BASE (SEE DETAIL B) USING THE FOLLOWING SEISMIC CERTIFIED MOUNTING HARDWARE PER MOUNTING HOLE: (HARDWARE PROVIDED BY INSTALLER).
  - 1/2-13 GRADE 5 BOLT TORQUE TO 15 FT-LBS. (20 NEWTON METERS).
  - US STANDARD HIGH STRENGTH ZINC-PLATED FLAT WASHER 5/8 (16) I.D. AND 1-1/2 (38) O.D.
  - 1/2 (13) HELICAL SPRING LOCK WASHER.
- CENTER OF GRAVITY DIMENSIONS ARE FOR REFERENCE ONLY.
- SWITCH IS DESIGNED FOR BOTH TOP AND BOTTOM CABLE ENTRY. REFER TO SHEET 1 FOR CABLE BENDING SPACE AND GUTTER SPACE DETAILS.
- ALL CONTROL WIRES (18-12 AWG) MUST BE TORQUED TO 19 in-lbs. (2 N-m)
- LUG TORQUE ARE APPLICABLE FOR CU & AL CABLES.
- FOR WORKING CLEARANCE REFER TO NATIONAL AND LOCAL CODES AND STANDARDS.



SOCKET SIZE ACROSS FLATS	TORQUE	
	Lb-Ft	N-m
1/8	4	5.4
5/32	8	10.9
3/16	10	13.6
7/32	12	16.3
1/4	17	23.1
5/16	23	31.2
3/8	31	42.1
1/2	42	57.0
9/16	50	67.9

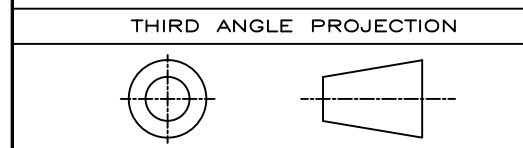
AMP	POLE	WEIGHT	CENTER OF GRAVITY in(mm)		
		LB(kg)	X	Y	Z
4000	3	4730(2145)	27.0 (686)	43.0 (1092)	30.0 (762)
	4	5930(2690)			

SIGNATURES		DATE
MODEL	AMG	01/15/08
DETAIL		
CHECKED		
ENGRG		
MFG		
QUALITY		
ISSUED		
DRAWING FILE:	90c-1019.dwg	
MODEL / ASSEMBLY FILE:	ZBTE(D/CT) 4000 AMP	
# CTQs	⊖	CRITICAL TO QUALITY CHARACTERISTIC

**ABB**

ZBTE(D/CT) 4000 AMP  
INSTALLATION DWG. NEMA-1

FIRST MADE FOR:	SIZE	CAGE CODE	DWG NO
	B		90C-1019
SCALE:	N/A		SHEET 3 OF 3



**ABB PROPRIETARY AND CONFIDENTIAL INFORMATION**  
 The information contained in the document has to be kept strictly confidential. Any unauthorized use, reproduction, distribution or disclosure to third parties is strictly forbidden. ABB reserves all rights regarding intellectual Property Rights. Copyright 2018 ABB. All rights reserved.

AutoCad Generated