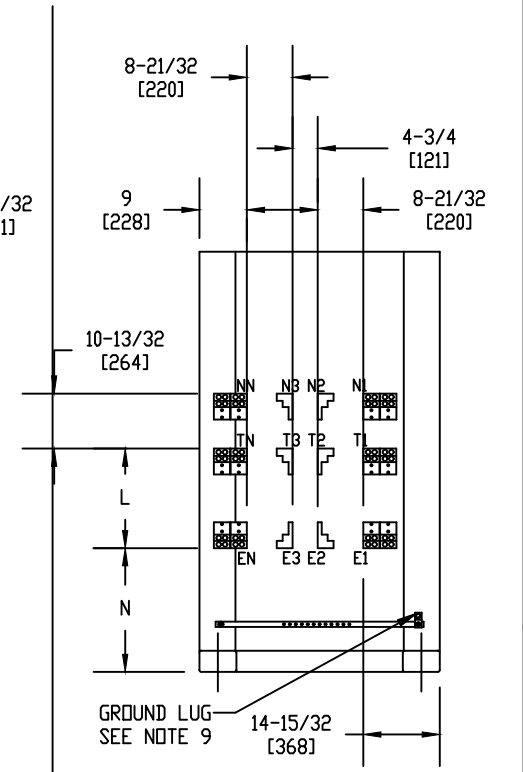
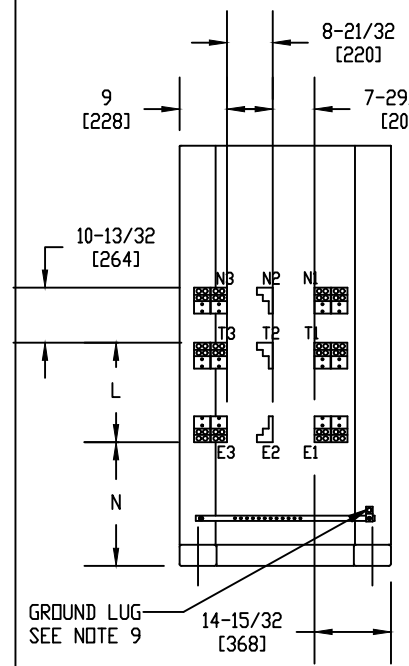
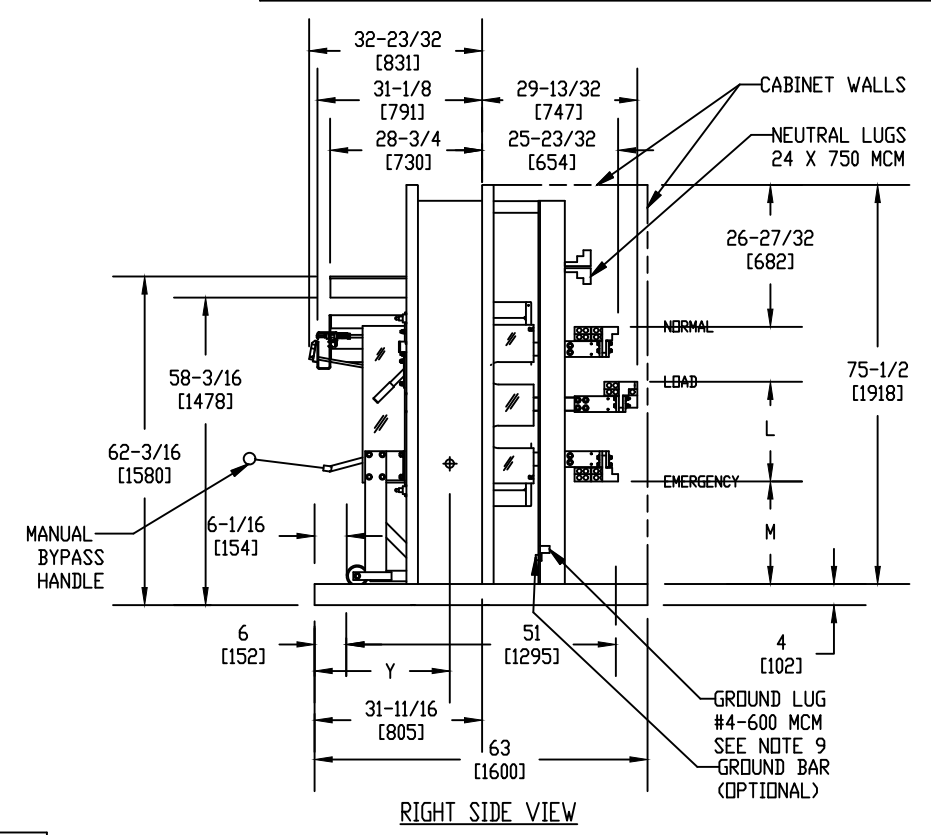
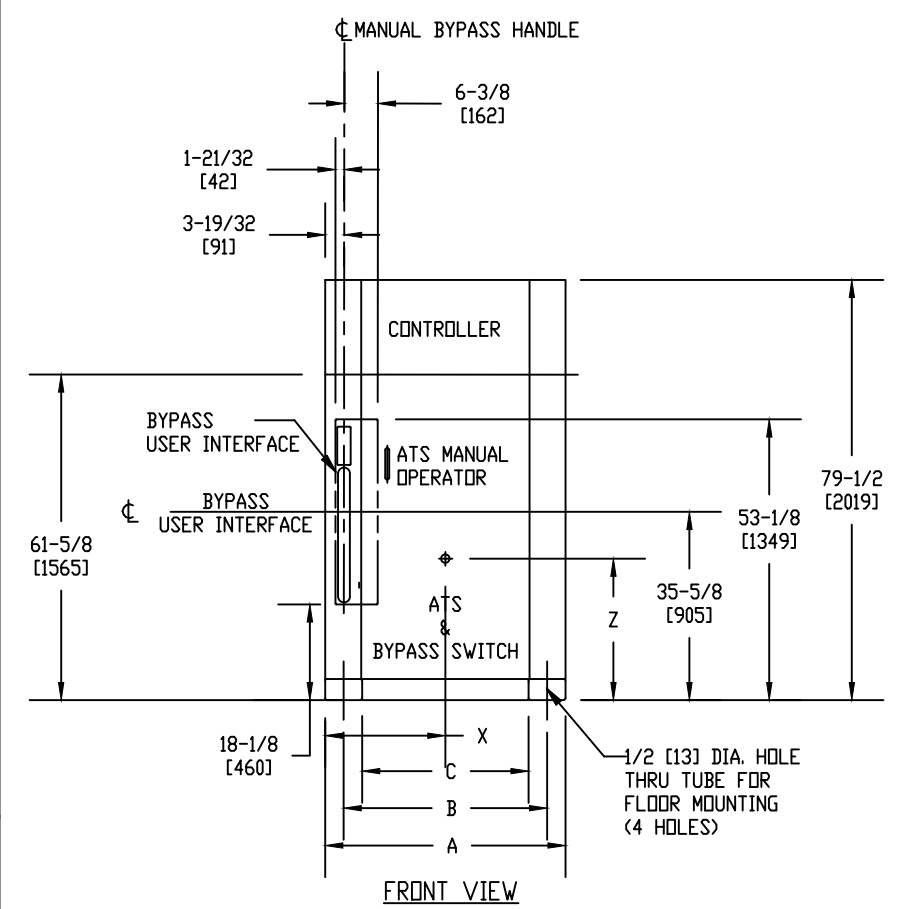




**ABB PROPRIETARY AND CONFIDENTIAL INFORMATION**  
 The information contained in the document has to be kept strictly confidential. Any unauthorized use, reproduction, distribution or disclosure to third parties is strictly forbidden. ABB reserves all rights regarding intellectual Property Rights. Copyright 2018 ABB. All rights reserved.

REVISIONS				
REV.	DESCRIPTION	DATE	APPROVED	
1	C075076	09/13/19	AR	MAS

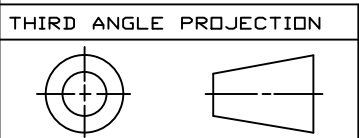


# OF POLES	CENTER OF GRAVITY			# OF POLES	X	Y	Z	WEIGHT LB(KG)
	A	B	C					
3-POLE	40 [1016]	33 [838]	26 [660]	3-POLE	20-9/32 [515]	30-9/16 [776]	33-7/8 [860]	2238 [1015]
4-POLE	45-1/2 [1156]	38-1/2 [978]	31-1/2 [800]	4-POLE	23-3/32 [587]	30-23/32 [780]	34 [864]	2603 [1181]

LUG SIZE	L	M	N
#4- 750 MCM	15-27/32 [402]	22-13/32 [569]	26-13/32 [671]

TOTAL 8 PORTS FOR THE STANDARD OFFERING

- NOTES:
- THE LOCATION OF THE USER INTERFACE WINDOW WITH RELATION TO THE DIMENSIONS OF THE OPEN STYLE BYPASS SWITCH ARE CRITICAL TO THE ALIGNMENT OF THE MANUAL BYPASS HANDLE.
  - SEE SHEET 3 AND 4 FOR CONTROL CHAMBER MOUNTING DIMENSIONS AND DOOR MODIFICATIONS.
  - ACCESS TO SIDES AND REAR OF UNIT RECOMMENDED.
  - RUN ALL CABLES IN REAR OF ENCLOSURE. NO CABLE ENTRY IN FRONT OF ENCLOSURE.
  - ATS DRAWS OUT TOWARD FRONT OF ENCLOSURE.
  - MAINTAIN ELECTRICAL CLEARANCE OF 1" (25mm) MINIMUM BETWEEN LIVE METAL PARTS AND GROUNDED METAL.
  - CUSTOMERS CUBICLE MUST INCLUDE A TWO DOOR FRONT.
  - LUGS MAY BE ORIENTED TO ACCEPT CABLING FROM TOP AS WELL AS BOTTOM ENTRY. LUGS ARE SUPPLIED AS OPTION ONLY.
  - GROUND LUG WILL BE PROVIDED IF THE GROUND BAR IS NOT REQUESTED.
  - PRODUCT HAS TO BE MOVED ONLY BY USING APPROPRIATE LIFTING TRUCKS.
  - ALL DIMENSIONS ARE FOR REFERENCE ONLY AND SHOWN IN INCHES(MILLIMETERS).
  - AUXILIARY PANEL SUPPLIED AS OPTIONAL ONLY.



Part must conform to SI 900000 Sect. 4, Toxicity Procedure

FOR ADDITIONAL INFO REFER TO:	SIGNATURES	DATE
APPLIED PRACTICES	MODEL	PK 10/08/08
DIMENSIONS ARE IN INCHES UNLESS OTHERWISE SPECIFIED IN DRAWING	DETAIL	PK 10/08/08
TOLERANCE ON: 1 PL DECIMALS ± 0.0 2 PL DECIMALS ± 0.02 3 PL DECIMALS ± 0.005 ANGLES ± 1.0 FRACTIONS ±	CHECKED	.
FINISH	ENGRG	.
CRITICAL TO QUALITY CHARACTERISTIC	MFG	.
	QUALITY	.
	ISSUED	.
	SOLID MODEL: 90C-1036	.

**ABB**

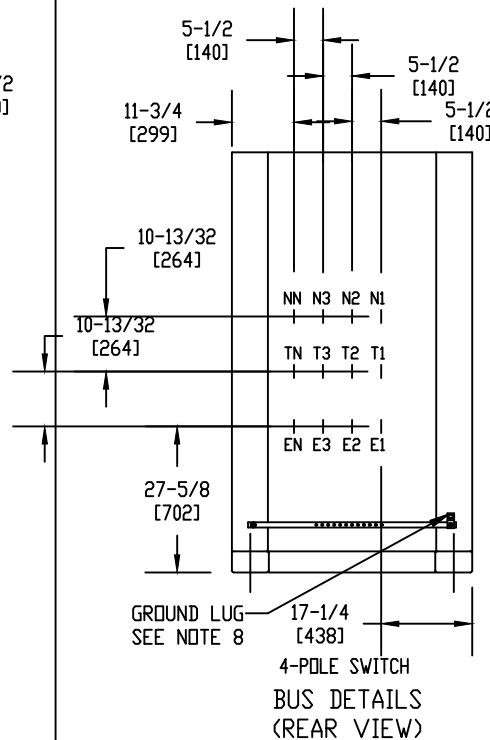
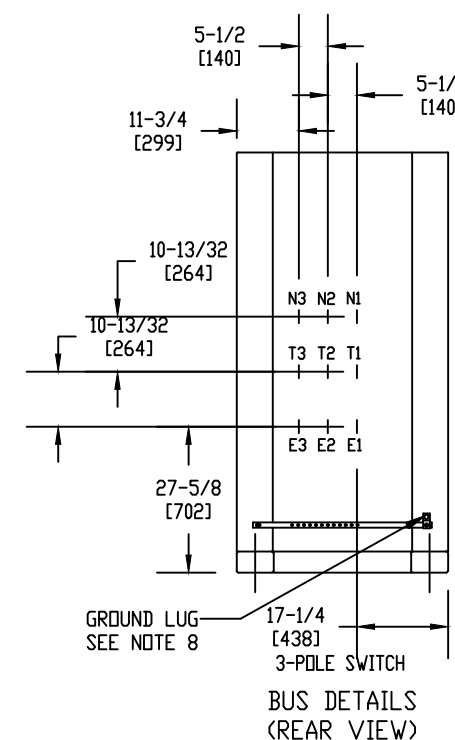
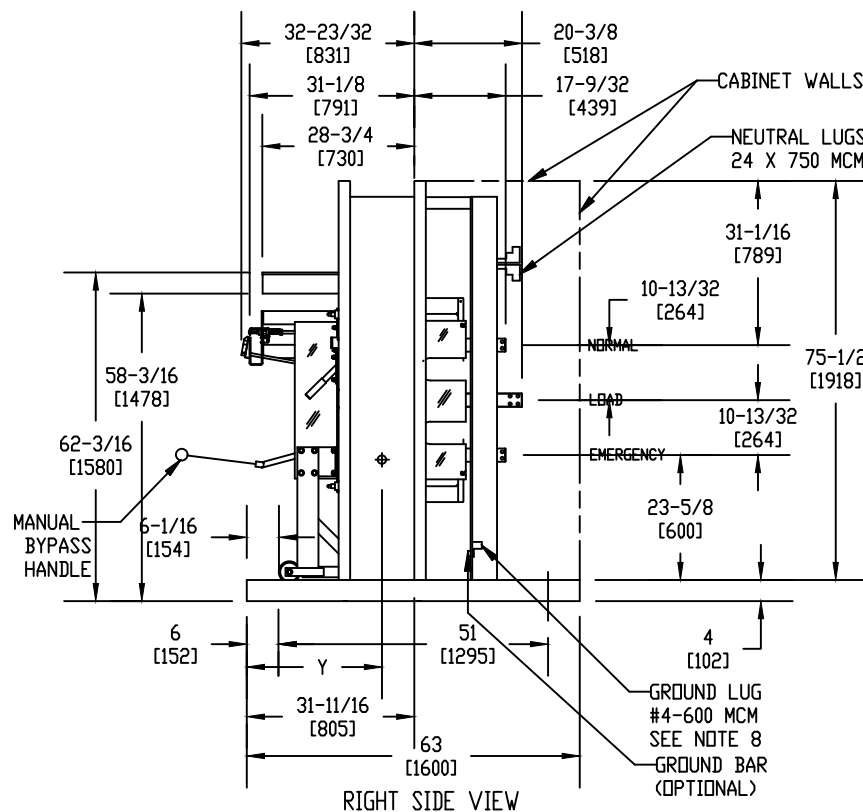
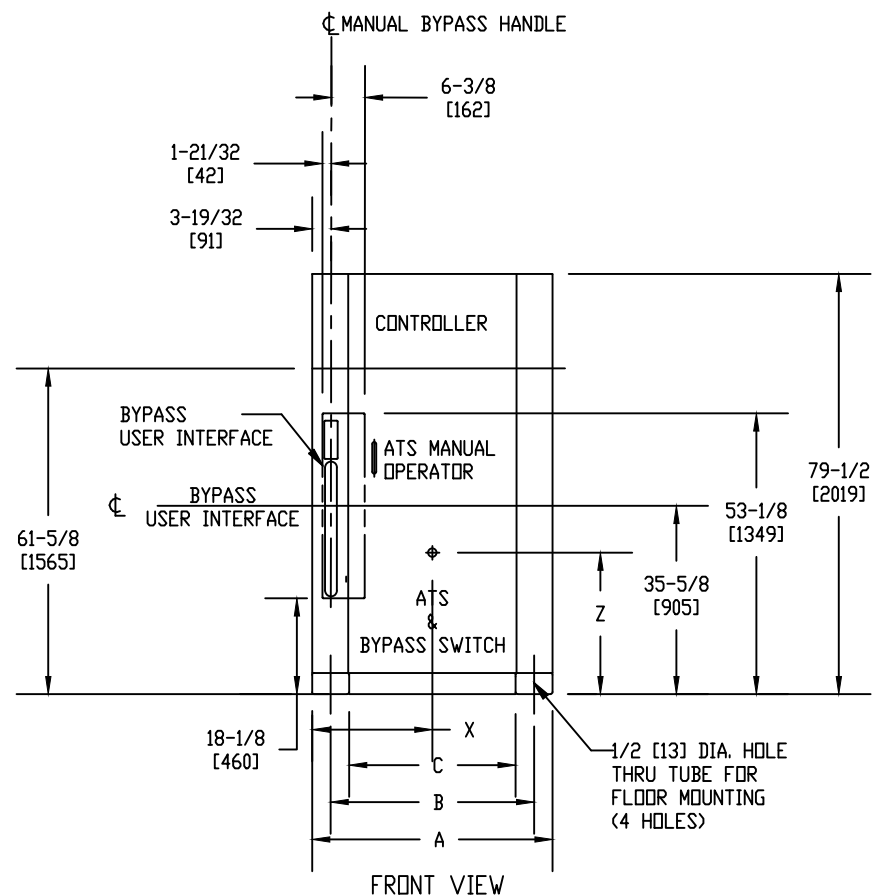
TITLE BYPASS SWITCH - REAR LUGS  
1600-2600 A  
ZBTE(D/CT)

SIZE DRAWING B 90C-1036 REV 1

SCALE: 0.030 REF. No: SHEET 1 OF 5

ABB PROPRIETARY AND CONFIDENTIAL INFORMATION

The information contained in the document has to be kept strictly confidential. Any unauthorized use, reproduction, distribution or disclosure to third parties is strictly forbidden. ABB reserves all rights regarding intellectual Property Rights. Copyright 2018 ABB. All rights reserved



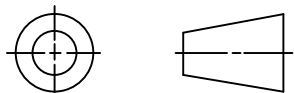
# OF POLES	A	B	C
3-POLE	40 [1016]	33 [838]	26 [660]
4-POLE	45-1/2 [1156]	38-1/2 [978]	31-1/2 [800]

CENTER OF GRAVITY				
# OF POLES	X	Y	Z	WEIGHT LB(KG)
3-POLE	20-1/16 [510]	28-13/32 [722]	33-1/2 [851]	2044 [927]
4-POLE	22-9/32 [566]	28-13/32 [722]	33-19/32 [853]	2348 [1065]

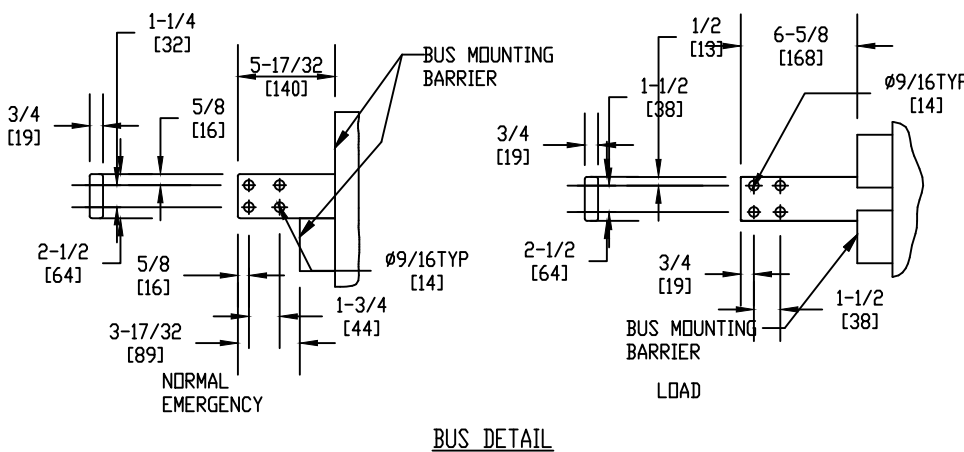
NOTES:

- THE LOCATION OF THE USER INTERFACE WINDOW WITH RELATION TO THE DIMENSIONS OF THE OPEN STYLE BYPASS SWITCH ARE CRITICAL TO THE ALIGNMENT OF THE MANUAL BYPASS HANDLE.
- SEE SHEET 3 AND 4 FOR CONTROL CHAMBER MOUNTING DIMENSIONS AND DOOR MODIFICATIONS.
- ACCESS TO SIDES AND REAR OF UNIT RECOMMENDED.
- RUN ALL CABLES IN REAR OF ENCLOSURE. NO CABLE ENTRY IN FRONT OF ENCLOSURE.
- ATS DRAWS OUT TOWARD FRONT OF ENCLOSURE.
- MAINTAIN ELECTRICAL CLEARANCE OF 1" (25mm) MINIMUM BETWEEN LIVE METAL PARTS AND GROUNDED METAL.
- CUSTOMERS CUBICLE MUST INCLUDE A TWO DOOR FRONT.
- GROUND LUG WILL BE PROVIDED IF THE GROUND BAR IS NOT REQUESTED.
- PRODUCT HAS TO BE MOVED ONLY BY USING APPROPRIATE LIFTING TRUCKS.
- ALL DIMENSIONS ARE FOR REFERENCE ONLY AND SHOWN IN INCHES(MILLIMETERS).
- AUXILIARY PANEL SUPPLIED AS OPTIONAL ONLY.

THIRD ANGLE PROJECTION



Part must conform to SI 900000 Sect. 4, Toxicity Procedure

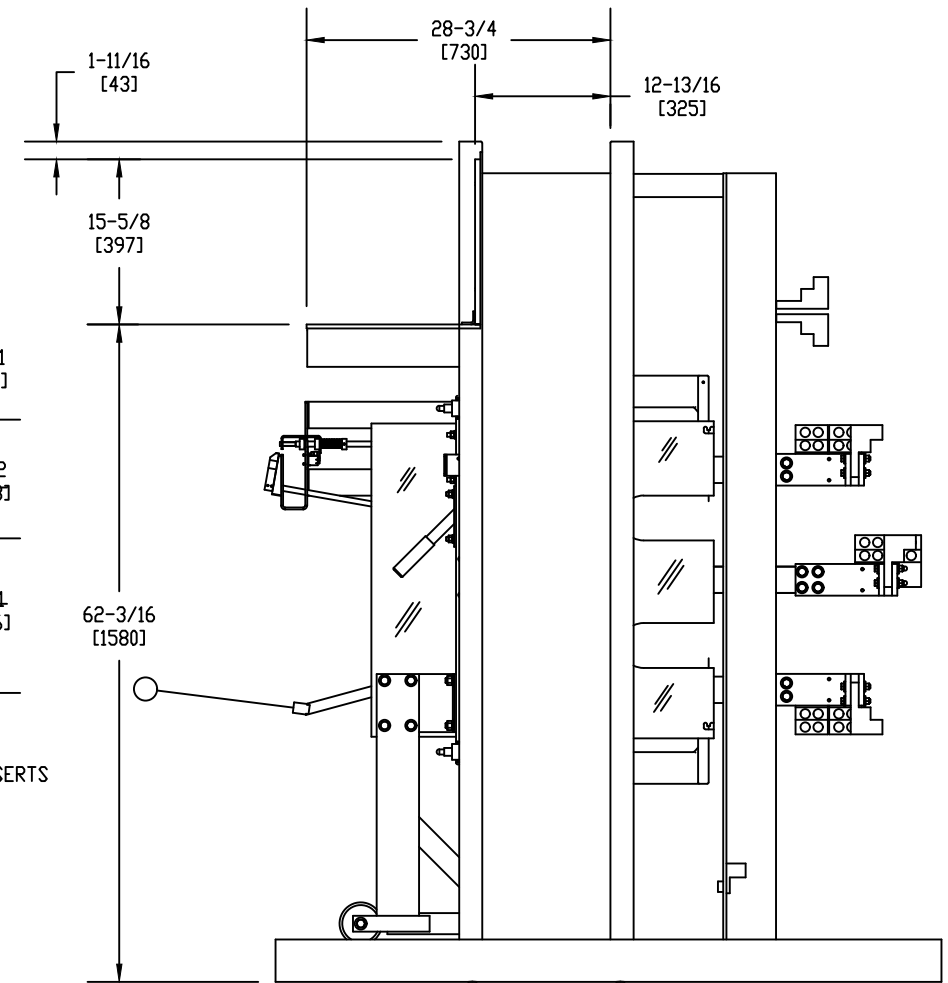
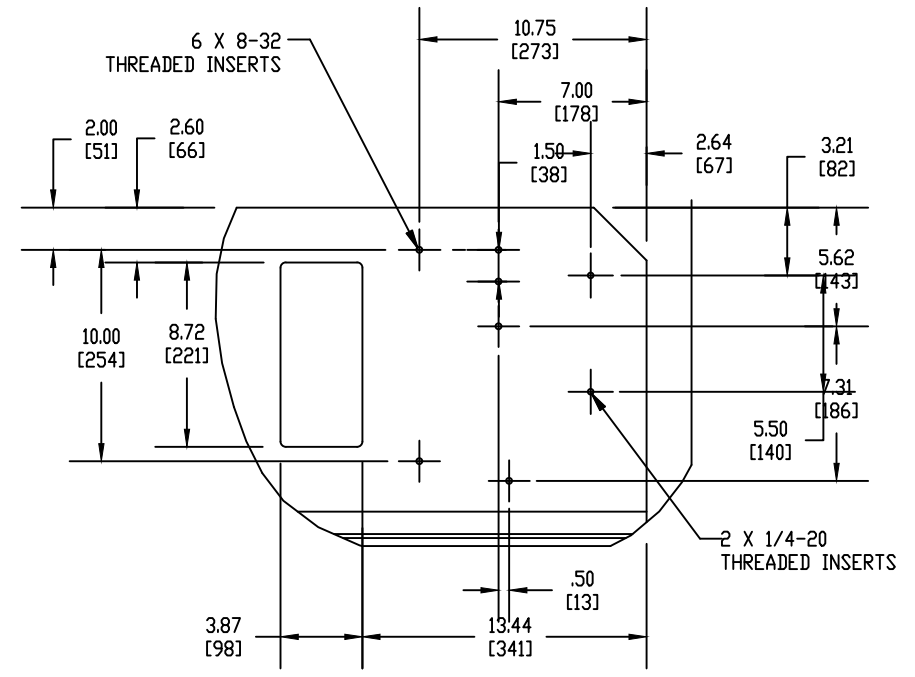
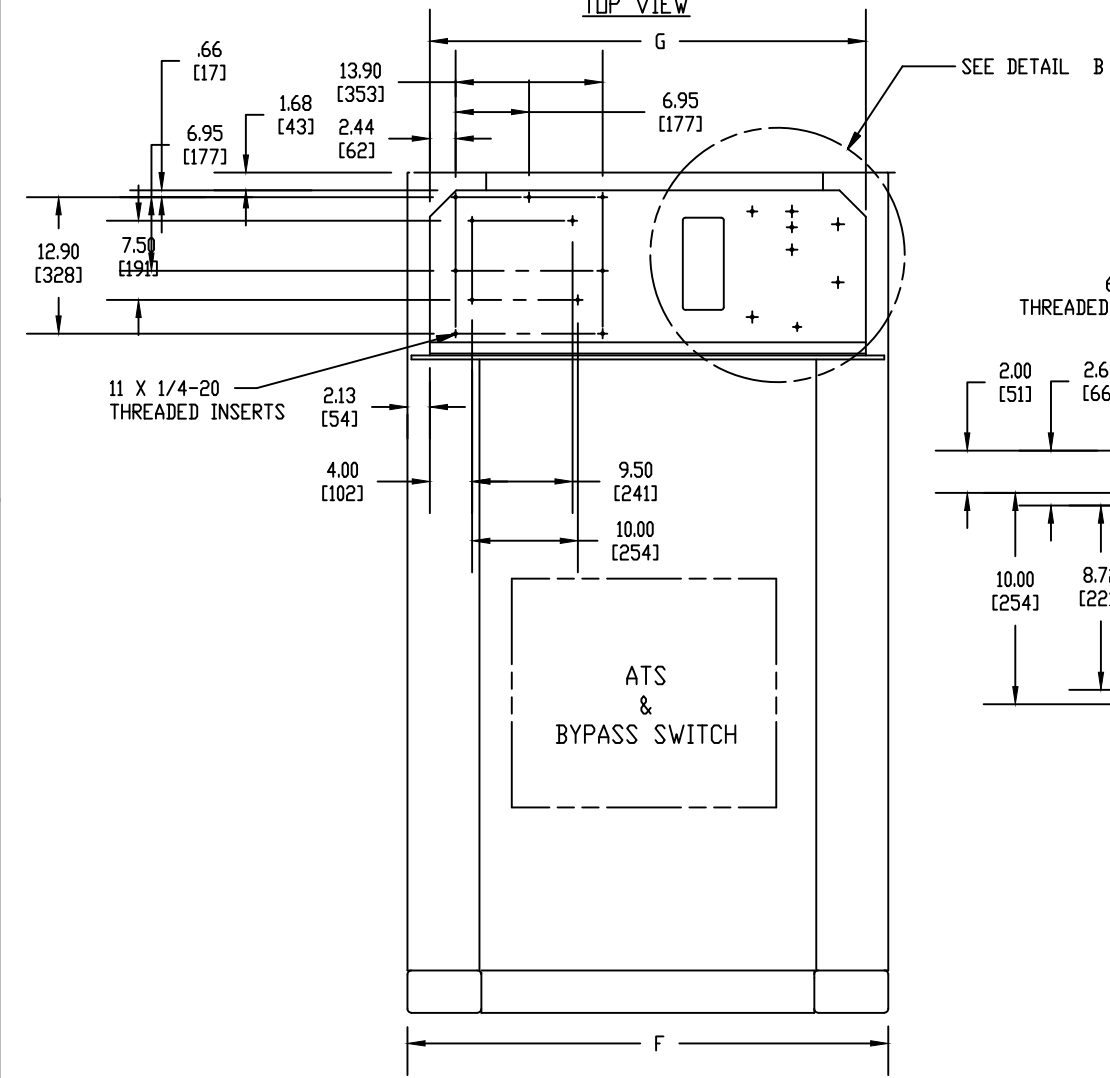
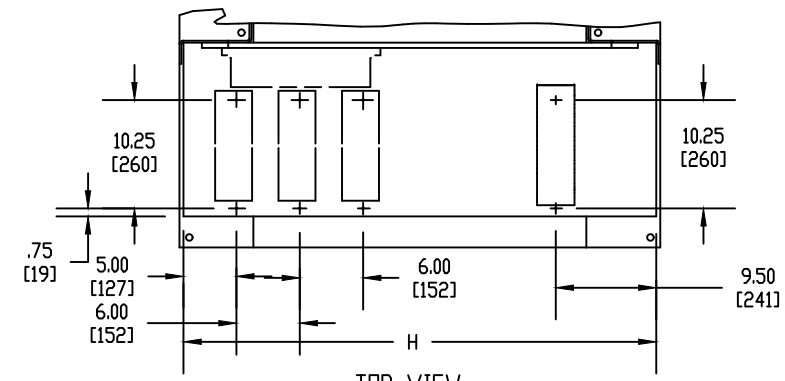


FOR ADDITIONAL INFO REFER TO:	SIGNATURES	DATE
APPLIED PRACTICES	MODEL	PK 10/08/08
DIMENSIONS ARE IN INCHES UNLESS OTHERWISE SPECIFIED IN DRAWING	DETAIL	PK 10/08/08
TOLERANCE IN: 1 PL DECIMALS ± 0.0, 2 PL DECIMALS ± 0.02, 3 PL DECIMALS ± 0.005, ANGLES ± 1.0, FRACTIONS ±	CHECKED	.
FINISH	ENGRG	.
CRITICAL TO QUALITY CHARACTERISTIC	MFG	.
	QUALITY	.
	ISSUED	.
	SOLID MODEL: 90C-1036_3P	.

TITLE		DRAWING	
BYPASS SWITCH - REAR BUS		90C-1036	
1600-2600 A		REV 1	
ZBTE(D/CT)		SHEET 2 OF 5	
SCALE: 0.030	REF. No: .		

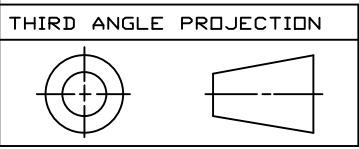


**ABB PROPRIETARY AND CONFIDENTIAL INFORMATION**  
 The information contained in the document has to be kept strictly confidential.  
 Any unauthorized use, reproduction, distribution or disclosure to third parties is strictly forbidden.  
 ABB reserves all rights regarding intellectual Property Rights.  
 Copyright 2018 ABB. All rights reserved



ALL DIMENSIONS ARE FOR REFERENCE ONLY AND SHOWN IN INCHES(MILLIMETERS)

# OF POLES	F	G	H
3-POLE	40 [1016]	35.8 [908]	39.2 [996]
4-POLE	45.5 [1156]	41.3 [1048]	44.7 [1136]



Part must conform to SI 900000 Sect. 4, Toxicity Procedure

FOR ADDITIONAL INFO REFER TO APPLIED PRACTICES	SIGNATURES	DATE
DIMENSIONS ARE IN INCHES UNLESS OTHERWISE SPECIFIED IN DRAWING	MODEL	PK 10/08/08
TOLERANCE ON: 1 PL DECIMALS ± 0.0 2 PL DECIMALS ± 0.02 3 PL DECIMALS ± 0.005 ANGLES ± 1.0 FRACTIONS ±	DETAIL	PK 10/08/08
FINISH	CHECKED	.
CRITICAL TO QUALITY CHARACTERISTIC	ENGRG	.
	MFG	.
	QUALITY	.
	ISSUED	.
	SOLID MODEL: 90C-1036_CC	.

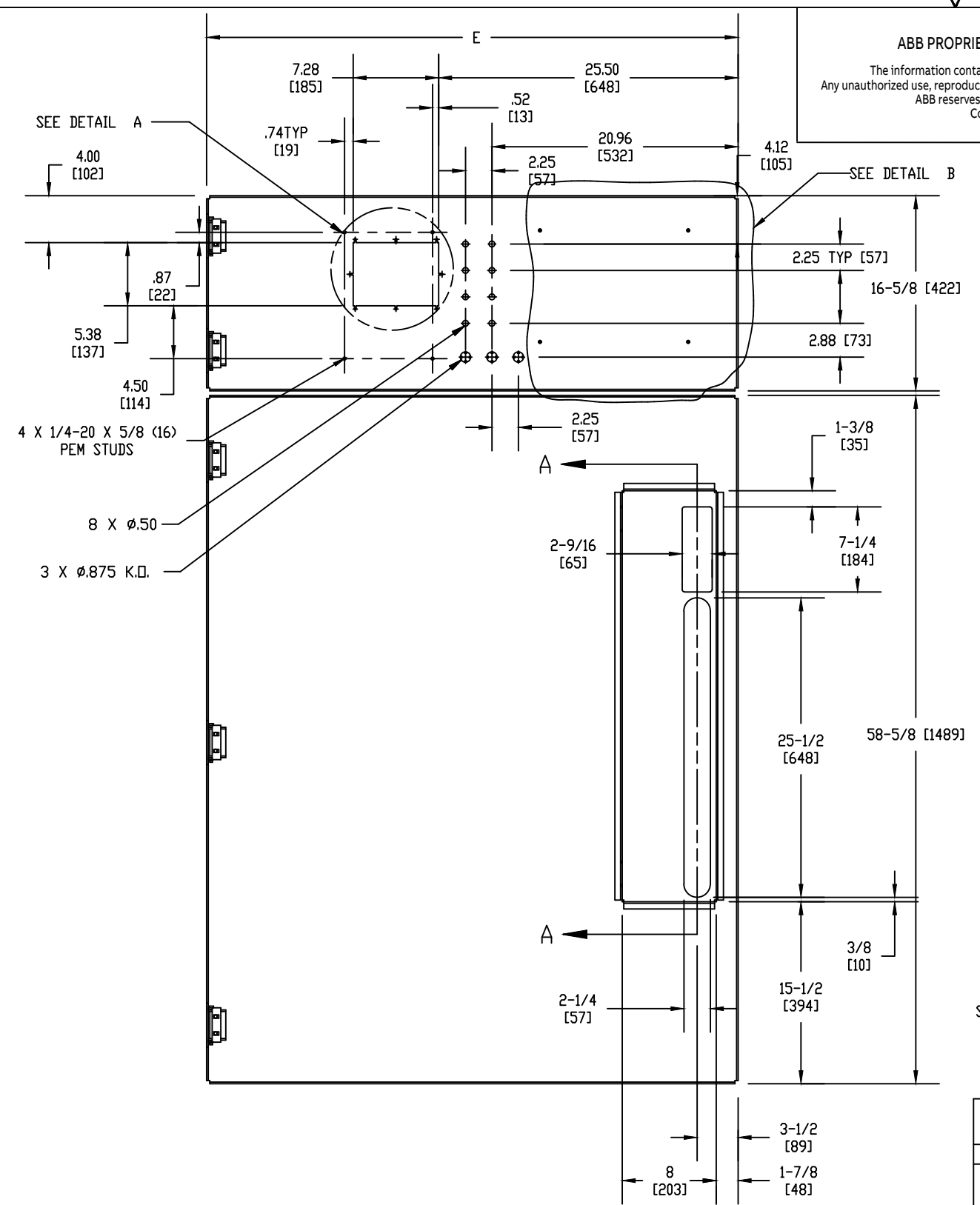
ABB

TITLE: BYPASS SWITCH - CONTROL CHAMBER  
1600-2600 A  
ZBTE(D/CT)

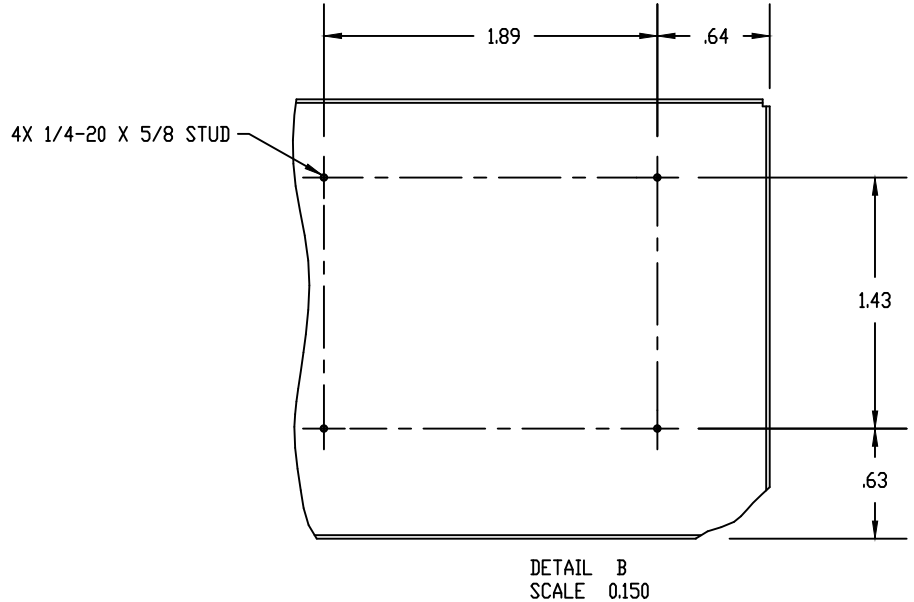
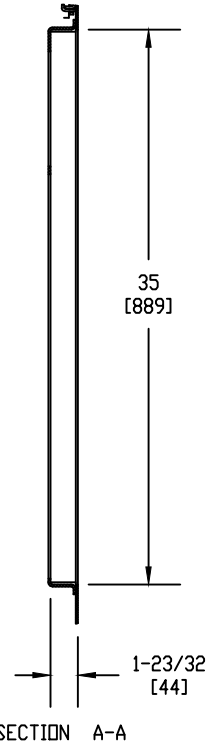
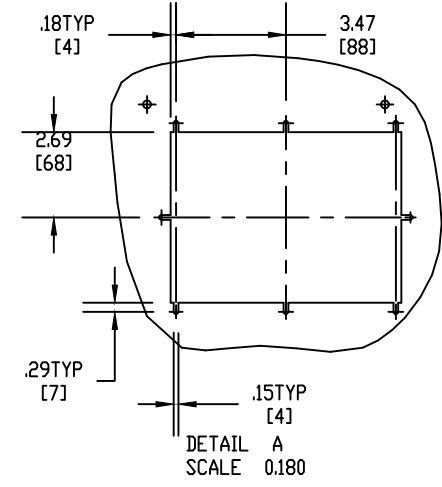
SIZE: B	DRAWING: 90C-1036	REV: 1
SCALE: 0.075	REF. No: .	SHEET 3 OF 5

ABB PROPRIETARY AND CONFIDENTIAL INFORMATION

The information contained in the document has to be kept strictly confidential. Any unauthorized use, reproduction, distribution or disclosure to third parties is strictly forbidden. ABB reserves all rights regarding intellectual Property Rights. Copyright 2018 ABB. All rights reserved

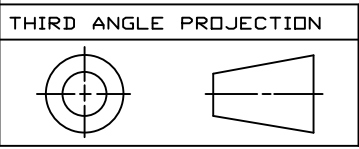


# OF POLES	E
3 POLE	39.76 [1010]
4 POLE	45.26 [1150]



ALL DIMENSIONS ARE FOR REFERENCE ONLY AND SHOWN IN INCHES(MILLIMETERS)

RECOMMENDED BYPASS SWITCH DOOR MODIFICATIONS (CUSTOMER SUPPLIED) INSIDE VIEW



Part must conform to SI 900000 Sect. 4, Toxicity Procedure

FOR ADDITIONAL INFO REFER TO	SIGNATURES	DATE
APPLIED PRACTICES	MODEL	PK 10/10/08
DIMENSIONS ARE IN INCHES UNLESS OTHERWISE SPECIFIED IN DRAWING	DETAIL	PK 10/10/08
TOLERANCE ON: 1 PL DECIMALS ± 0.0 2 PL DECIMALS ± 0.02 3 PL DECIMALS ± 0.005 ANGLES ± 1.0	CHECKED	
FRACTIONS ±	ENGRG	
FINISH	MFG	
CRITICAL TO QUALITY CHARACTERISTIC	QUALITY	
	ISSUED	
	SOLID MODEL: 90C-1000_DOORMOD	

**ABB**

TITLE BYPASS SWITCH DOOR MODIFICATIONS  
1600-2600 A  
ZBTE(D/CT)

SIZE	DRAWING	REV
B		1

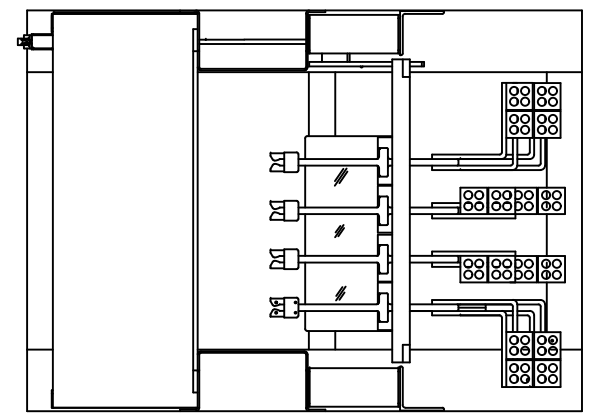
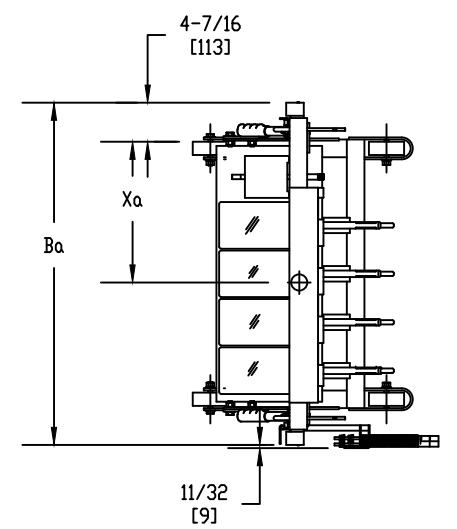
90C-1036

SCALE: 0.090 REF. No: SHEET 4 OF 5

↓

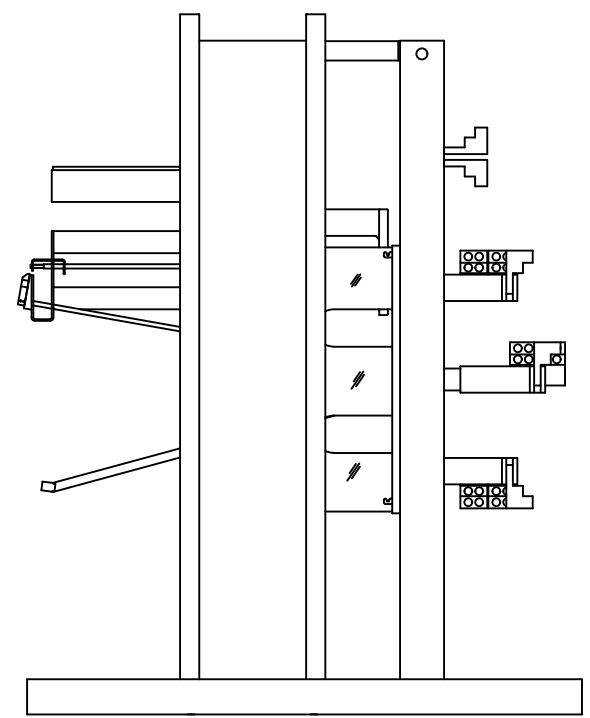
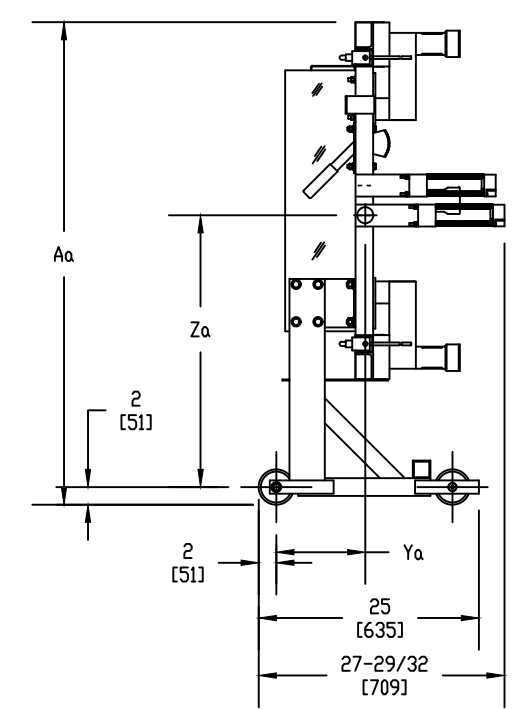
**ABB PROPRIETARY AND CONFIDENTIAL INFORMATION**

The information contained in the document has to be kept strictly confidential.  
Any unauthorized use, reproduction, distribution or disclosure to third parties is strictly forbidden.  
ABB reserves all rights regarding intellectual Property Rights.  
Copyright 2018 ABB. All rights reserved



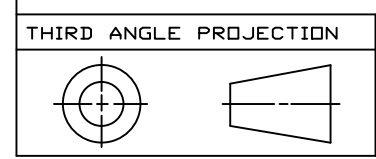
ATS POWER PANEL WITH CART DIMENSIONS			
ZBTE(D/CT) SWITCH	POLES	Aa	Ba
1600-2600 AMP	3-POLE	54-25/32 [1391]	33-3/8 [848]
	4-POLE	54-25/32 [1391]	38-7/8 [987]

CENTER OF GRAVITY OF ATS POWER PANEL WITH CART					
ZBTE(D/CT) SWITCH	POLES	Xa	Ya	Za	WEIGHT LB(KG)
1600-2600 AMP	3-POLE	13 [330]	10-1/8 [257]	29-17/32 [750]	559 [253]
	4-POLE	15-13/16 [402]	10-7/32 [260]	29-7/8 [759]	683 [310]



ALL DIMENSIONS ARE FOR REFERENCE ONLY AND SHOWN IN INCHES(MILLIMETERS)

ATS POWER PANEL SHOWN OUT-SIDE THE FRAME



Part must conform to SI 900000 Sect. 4, Toxicity Procedure

FOR ADDITIONAL INFO REFER TO APPLIED PRACTICES	SIGNATURES	DATE	<b>ABB</b>
DIMENSIONS ARE IN INCHES UNLESS OTHERWISE SPECIFIED IN DRAWING	MODEL PK	10/08/08	
TOLERANCE ON: 1 PL DECIMALS ± 0.0 2 PL DECIMALS ± 0.02 3 PL DECIMALS ± 0.005 ANGLES ± 1.0 FRACTIONS ±	DETAIL PK	10/08/08	TITLE BYPASS SWITCH - ATS POWER PANEL 1600-2600 A ZBTE(D/CT)
FINISH	CHECKED	.	
CRITICAL TO QUALITY CHARACTERISTIC	ENGRG	.	SIZE DRAWING B
	MFG	.	
	QUALITY	.	90C-1036 REV 1
	ISSUED	.	
	SOLID MODEL: 90C-1036_ATS		SCALE: 0.050
			REF. No: .
			SHEET 5 OF 5