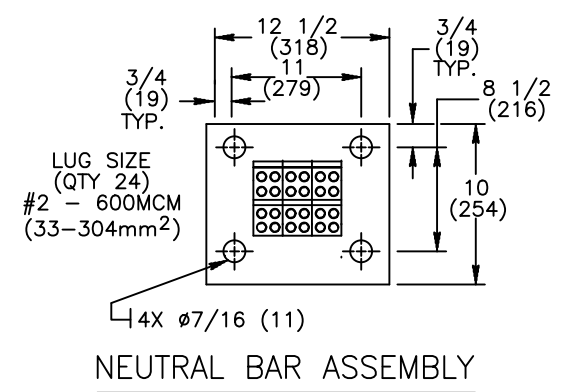
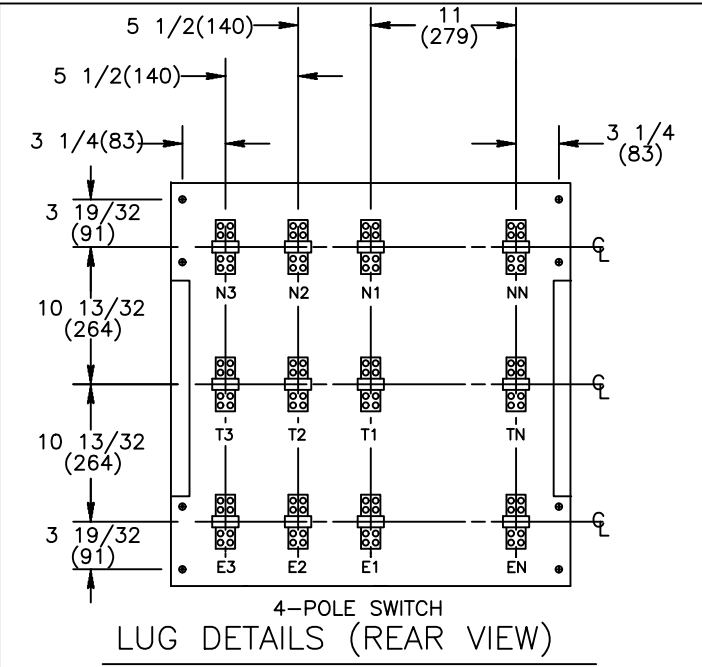
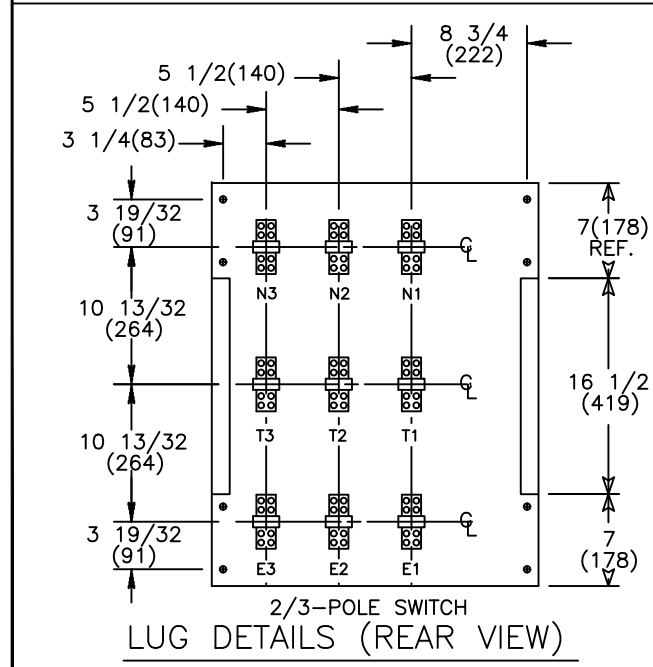


	A	B
2/3-POLE	23 (584)	7/8 (22)
4-POLE	28 1/2 (724)	6 3/8 (162)

		LUG SIZE
1600 TO 2000A	(QTY 8)	#2 - 600 MCM (33-304mm ²)
LUGS ARE SUPPLIED AS OPTIONAL ACCESSORIES ONLY		

REVISIONS			
REV.	DESCRIPTION	DATE	APPROVED
1	C076899	10/14/19	GK MAS

- NOTES:
- FOR 2-POLE SWITCHES, OMIT CENTER POLE.
 - OPEN TYPE SWITCH SUPPLIED WITH 6 FT. (1,8m) LONG HARNESS BETWEEN POWER AND CONTROL PANELS. HARNESS EXITS FROM LOWER RIGHT CORNER OF POWER PANEL.
 - DO NOT RUN CABLES IN FRONT OF SWITCH. RUN ALL CABLES ON RIGHT SIDE.
 - MAINTAIN ELECTRICAL CLEARANCE OF 1" (25mm) MIN. BETWEEN LIVE METAL PARTS AND GROUNDED METAL.
 - ALL DIMENSIONS ARE FOR REFERENCE ONLY AND SHOWN IN INCHES(MILLIMETERS).
 - SEE "DOOR DETAIL" & "CONTROL PANEL" DIMENSIONS ON SHEET 3.



SIGNATURES		DATE
MODEL	SG	02/22/08
DETAIL		
CHECKED		
ENGRG	SB	02/22/08
MFG		
QUALITY		
ISSUED		
DRAWING FILE: 90c-2010.dwg		
MODEL / ASSEMBLY FILE: ZTED/CT 1600-2000 AMP 2, 3, & 4 POLES		
# CTQs	⊖	CRITICAL TO QUALITY CHARACTERISTIC

ABB		
TITLE		
ZTED/CT 1600A-2000A 2,3,4P OPEN STYLE - REAR LUG		
FIRST MADE FOR: ZTED/CT 1600-2000 AMP 2, 3, & 4 POLE		
SIZE	CAGE CODE	DWG NO
B		90C-2010
SCALE: N/A	SHEET 1 of 3	

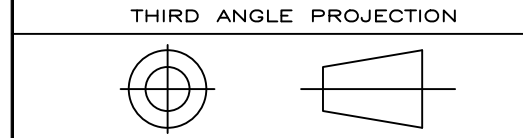
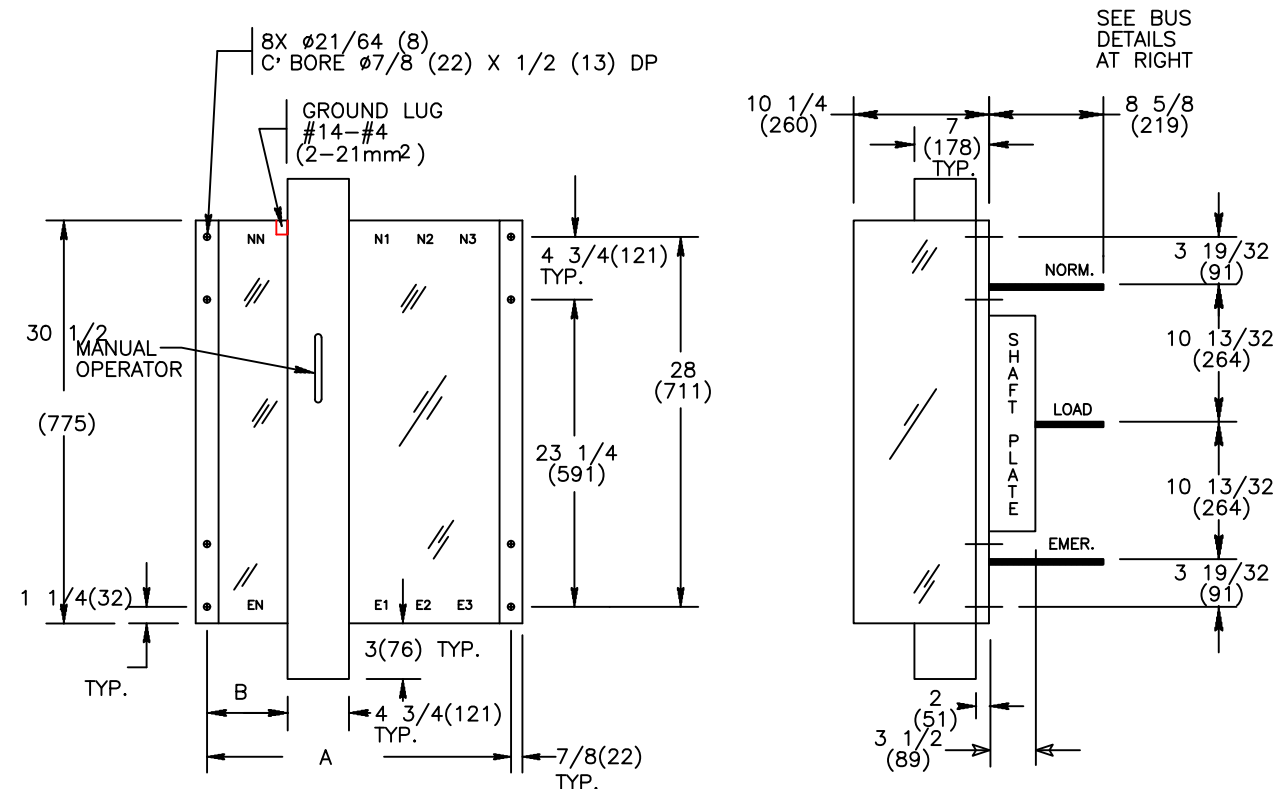


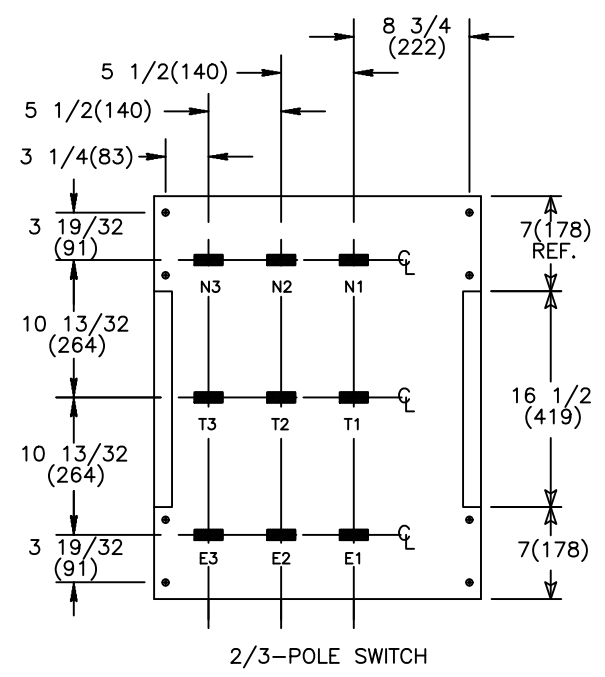
ABB PROPRIETARY AND CONFIDENTIAL INFORMATION
 The information contained in the document has to be kept strictly confidential.
 Any unauthorized use, reproduction, distribution or disclosure to third parties is strictly forbidden.
 ABB reserves all rights regarding intellectual Property Rights.
 Copyright 2018 ABB. All rights reserved

AutoCad Generated

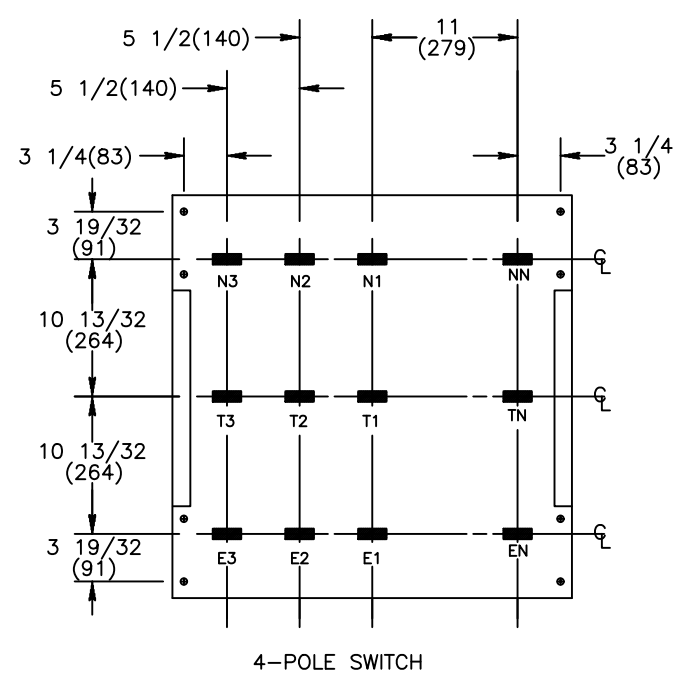


	A	B
2/3-POLE	23 (584)	7/8 (22)
4-POLE	28 1/2 (724)	6 3/8 (162)

SEE BUS
DETAILS
AT RIGHT



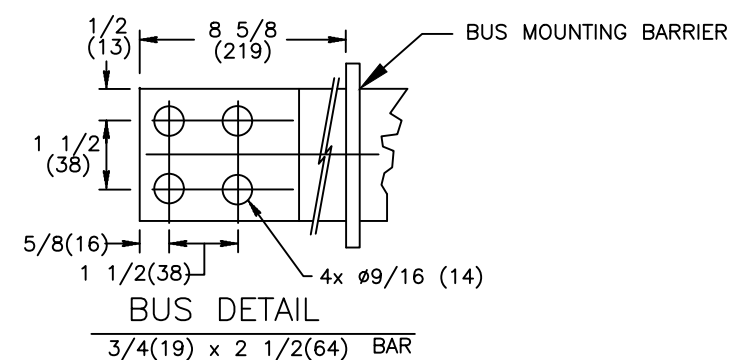
BUS DETAILS (REAR VIEW)



BUS DETAILS (REAR VIEW)

NOTES:

- FOR 2-POLE SWITCHES, OMIT CENTER POLE.
- OPEN TYPE SWITCH SUPPLIED WITH 6 FT. (1,8m) LONG HARNESS BETWEEN POWER AND CONTROL PANELS. HARNESS EXITS FROM LOWER RIGHT CORNER OF POWER PANEL.
- DO NOT RUN CABLES IN FRONT OF SWITCH. RUN ALL CABLES ON RIGHT SIDE.
- MAINTAIN ELECTRICAL CLEARANCE OF 1(25mm) MIN. BETWEEN LIVE METAL PARTS AND GROUNDED METAL.
- ALL DIMENSIONS ARE FOR REFERENCE ONLY AND SHOWN IN INCHES(MILLIMETERS).
- SEE "DOOR DETAIL" & "CONTROL PANEL" DIMENSIONS ON SHEET 3.



BUS DETAIL
3/4(19) x 2 1/2(64) BAR



TITLE
ZTED/CT 1600A-2000A 2,3,4P
OPEN STYLE - REAR BUS

SIGNATURES	DATE
MODEL SG	02/22/08
DETAIL	
CHECKED	
ENGRG SB	02/22/08
MFG	
QUALITY	
ISSUED	
DRAWING FILE: 90c-2010.dwg	
MODEL / ASSEMBLY FILE: ZTED/CT 1600-2000 AMP - 2, 3, & 4 POLE	
# CTQs	⊖ CRITICAL TO QUALITY CHARACTERISTIC

FIRST MADE FOR:	SIZE	CAGE CODE	DWG NO
ZTED/CT 1600-2000 AMP - 2, 3, & 4 POLE	B		90C-2010
SCALE: N/A	SHEET 2 of 3		

THIRD ANGLE PROJECTION

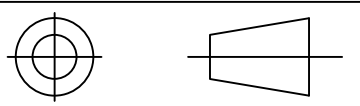
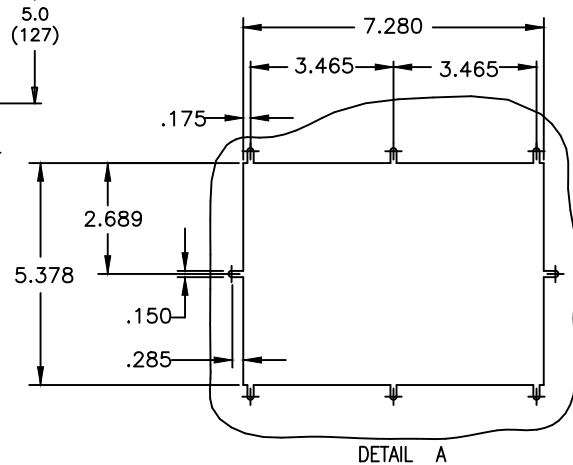
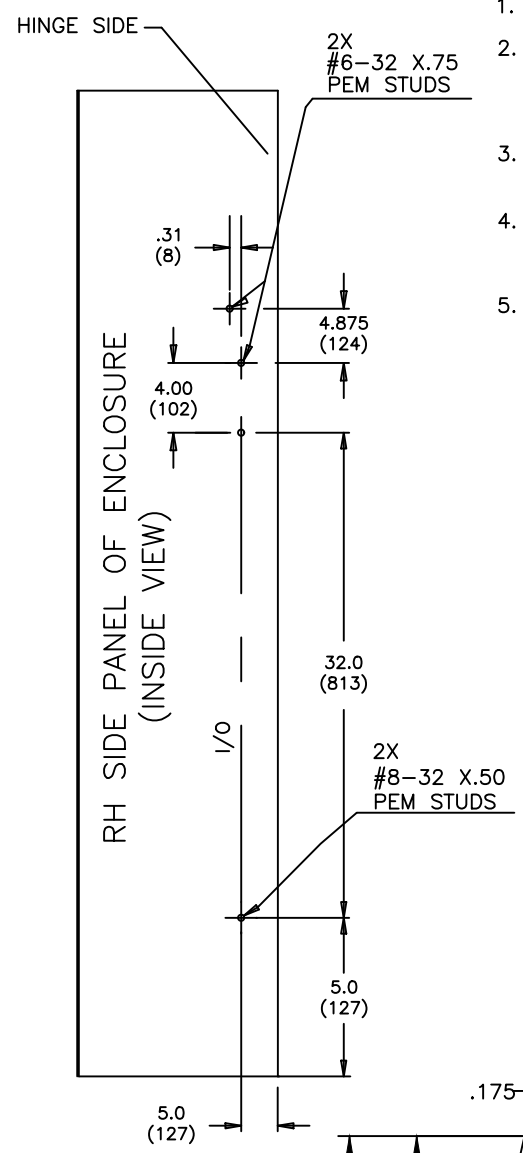
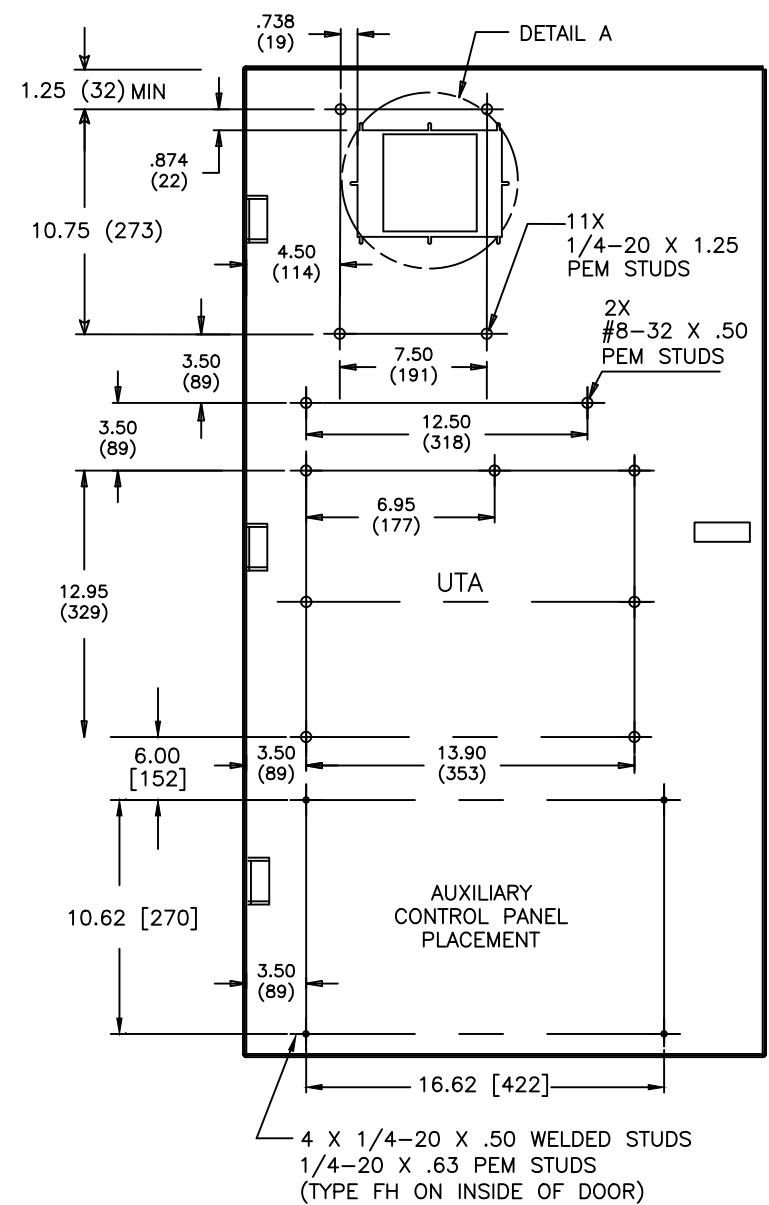


ABB PROPRIETARY AND CONFIDENTIAL INFORMATION
The information contained in the document has to be kept strictly confidential. Any unauthorized use, reproduction, distribution or disclosure to third parties is strictly forbidden. ABB reserves all rights regarding intellectual Property Rights. Copyright 2018 ABB. All rights reserved

AutoCad Generated



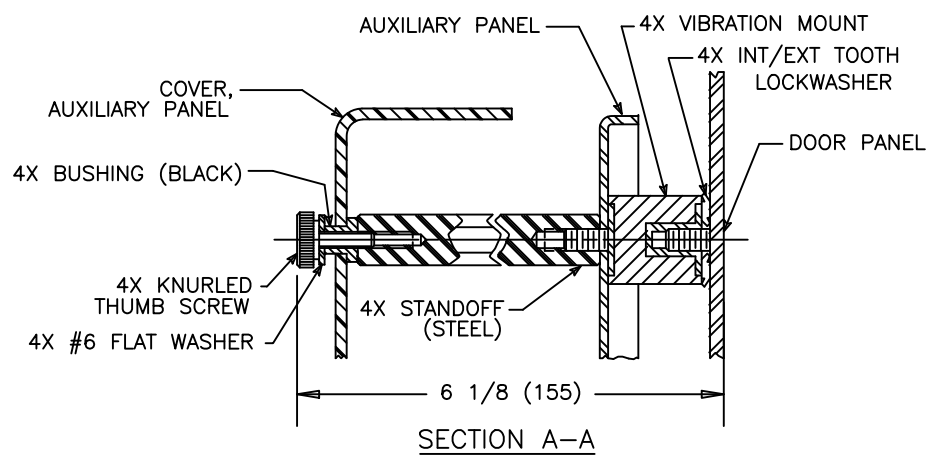
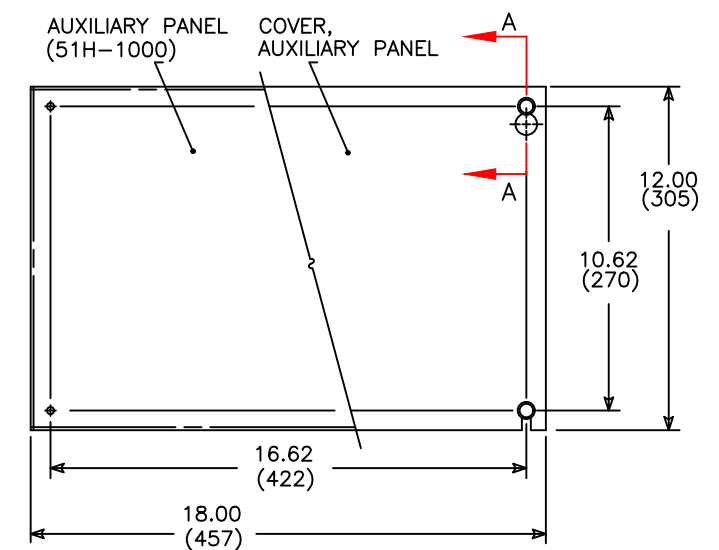
DOOR DETAIL (INSIDE VIEW)



NOTES:

1. FOR 2-POLE SWITCHES, OMIT CENTER POLE.
2. OPEN TYPE SWITCH SUPPLIED WITH 6 FT. (1.8m) LONG HARNESS BETWEEN POWER AND CONTROL PANELS. HARNESS EXITS FROM LOWER RIGHT CORNER OF POWER PANEL.
3. DO NOT RUN CABLES IN FRONT OF SWITCH. RUN ALL CABLES ON RIGHT SIDE.
4. MAINTAIN ELECTRICAL CLEARANCE OF 1" (25mm) MIN. BETWEEN LIVE METAL PARTS AND GROUNDED METAL.
5. ALL DIMENSIONS ARE FOR REFERENCE ONLY AND SHOWN IN INCHES(MILLIMETERS).

AUXILIARY CONTROL PANEL



SIGNATURES		DATE		ABB TITLE ZTED/CT 1600-2000A 2,3,4P OPEN STYLE-DOOR LAYOUT FIRST MADE FOR: ZTED/CT 1600-2000 AMP - 2, 3, & 4 POLE	
MODEL	SG	02/22/08			
DETAIL					
CHECKED					
ENGRG	SB	02/22/08			
MFG				DWG NO 90C-2010	
QUALITY					
ISSUED				SCALE: N/A SHEET 3 of 3	
DRAWING FILE:	90c-2010.dwg				
MODEL / ASSEMBLY FILE:	ZTED/CT 1600-2000 AMP 2,3,4 & POLE			SIZE B	
# CTQs	CRITICAL TO QUALITY CHARACTERISTIC				

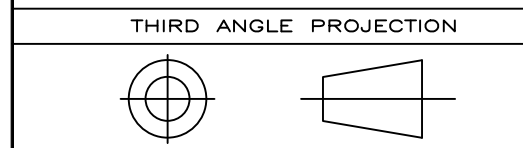


ABB PROPRIETARY AND CONFIDENTIAL INFORMATION
 The information contained in the document has to be kept strictly confidential. Any unauthorized use, reproduction, distribution or disclosure to third parties is strictly forbidden. ABB reserves all rights regarding intellectual Property Rights. Copyright 2018 ABB. All rights reserved

AutoCad Generated