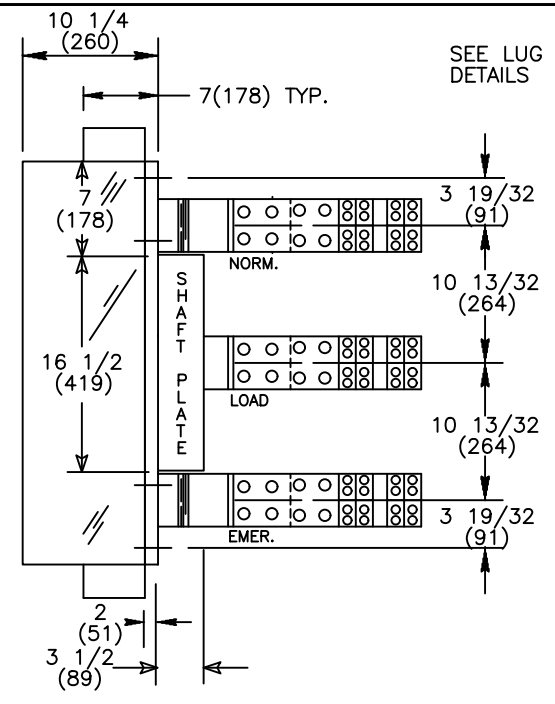


FRONT VIEW

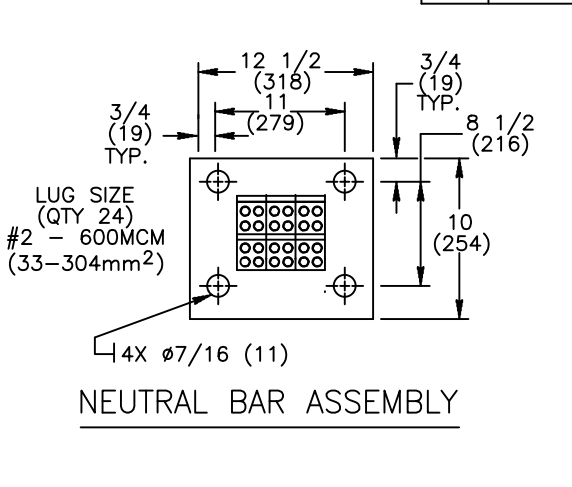
	A	B
2/3-POLE	23 (584)	7/8 (22)
4-POLE	28 1/2 (724)	6 3/8 (162)



RIGHT SIDE VIEW

		LUG SIZE
3000 A	(QTY 8)	#2- 600 MCM (33-304mm ²)
LUGS ARE SUPPLIED AS OPTIONAL ACCESSORIES ONLY		

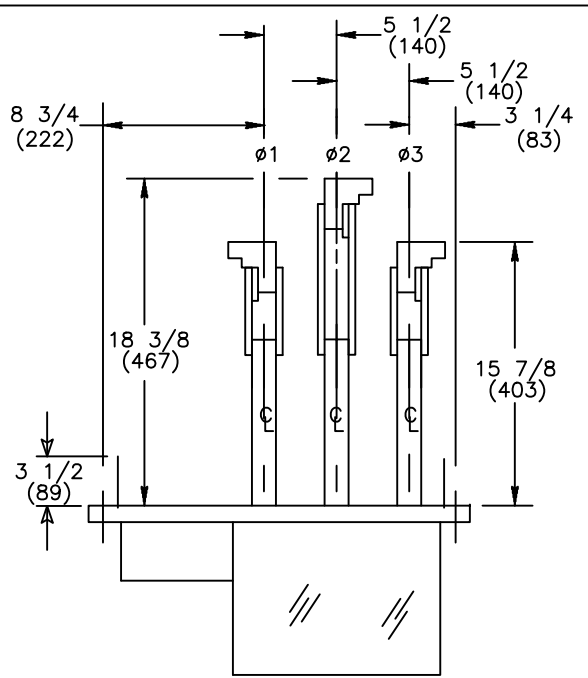
REVISIONS			
REV.	DESCRIPTION	DATE	APPROVED
1	C075076 UPDATED REBRANDING	09/13/19	AR MAS



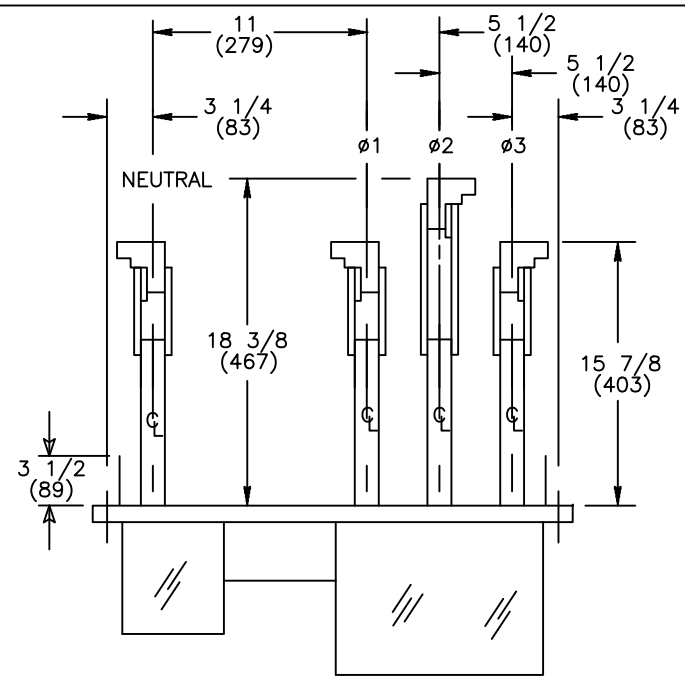
NEUTRAL BAR ASSEMBLY

NOTES:

- FOR 2-POLE SWITCHES, OMIT CENTER POLE.
- OPEN TYPE SWITCH SUPPLIED WITH 6 FT. (1.8m) LONG HARNESS BETWEEN POWER AND CONTROL PANELS. HARNESS EXITS FROM LOWER RIGHT CORNER OF POWER PANEL.
- DO NOT RUN CABLES IN FRONT OF SWITCH. RUN ALL CABLES ON RIGHT SIDE.
- MAINTAIN ELECTRICAL CLEARANCE OF 1" (25mm) MIN. BETWEEN LIVE METAL PARTS AND GROUNDED METAL.
- ALL DIMENSIONS ARE FOR REFERENCE ONLY AND SHOWN IN INCHES(MILLIMETERS).



2/3-POLE SWITCH LUG DETAILS (TOP VIEW)



4-POLE SWITCH LUG DETAILS (TOP VIEW)

THIRD ANGLE PROJECTION

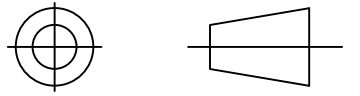


ABB PROPRIETARY AND CONFIDENTIAL INFORMATION

The information contained in the document has to be kept strictly confidential. Any unauthorized use, reproduction, distribution or disclosure to third parties is strictly forbidden. ABB reserves all rights regarding intellectual Property Rights. Copyright 2018 ABB. All rights reserved

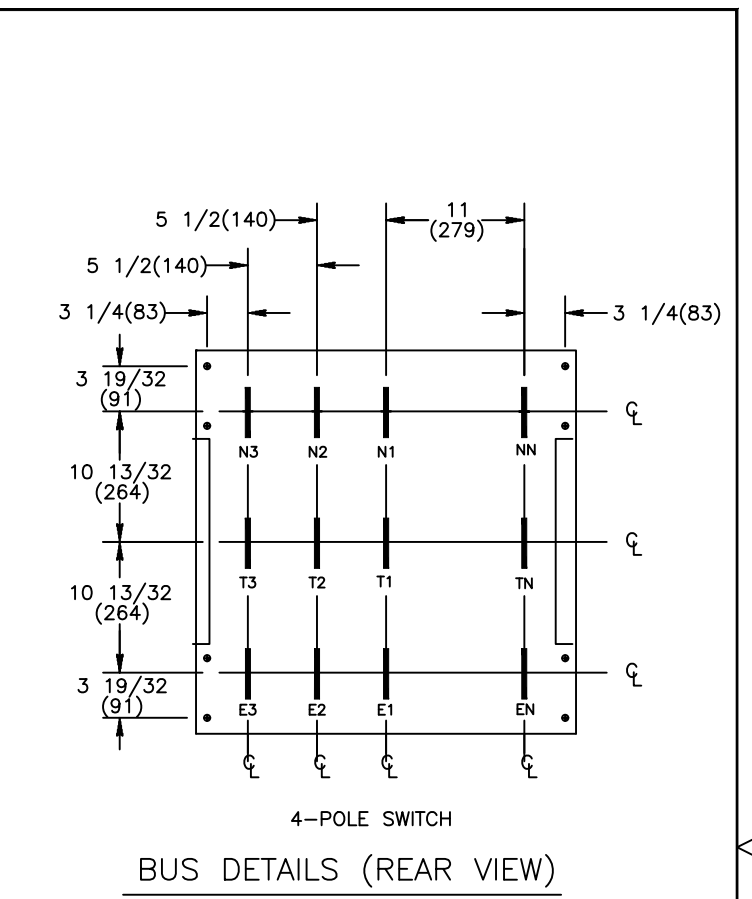
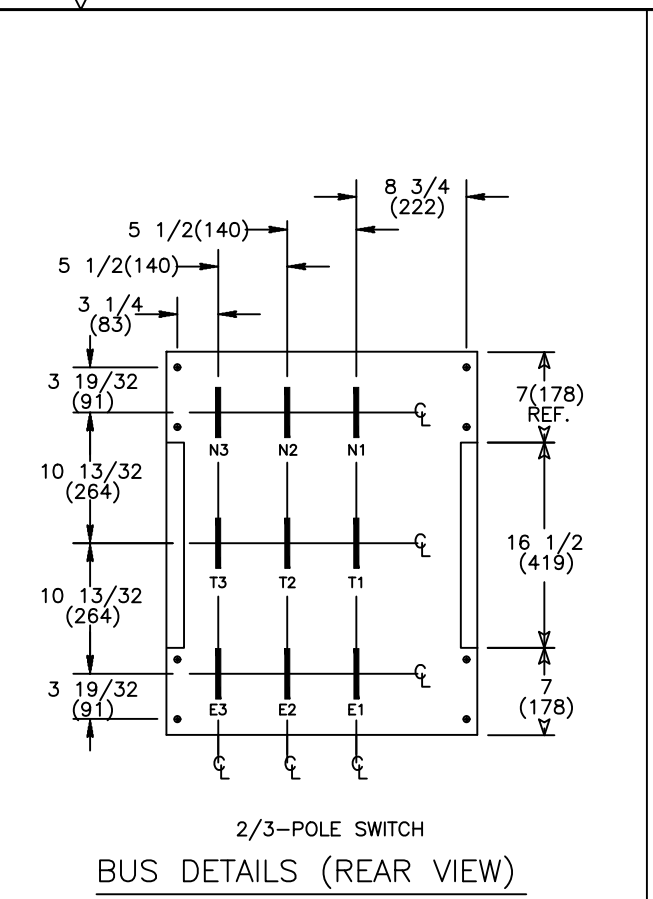
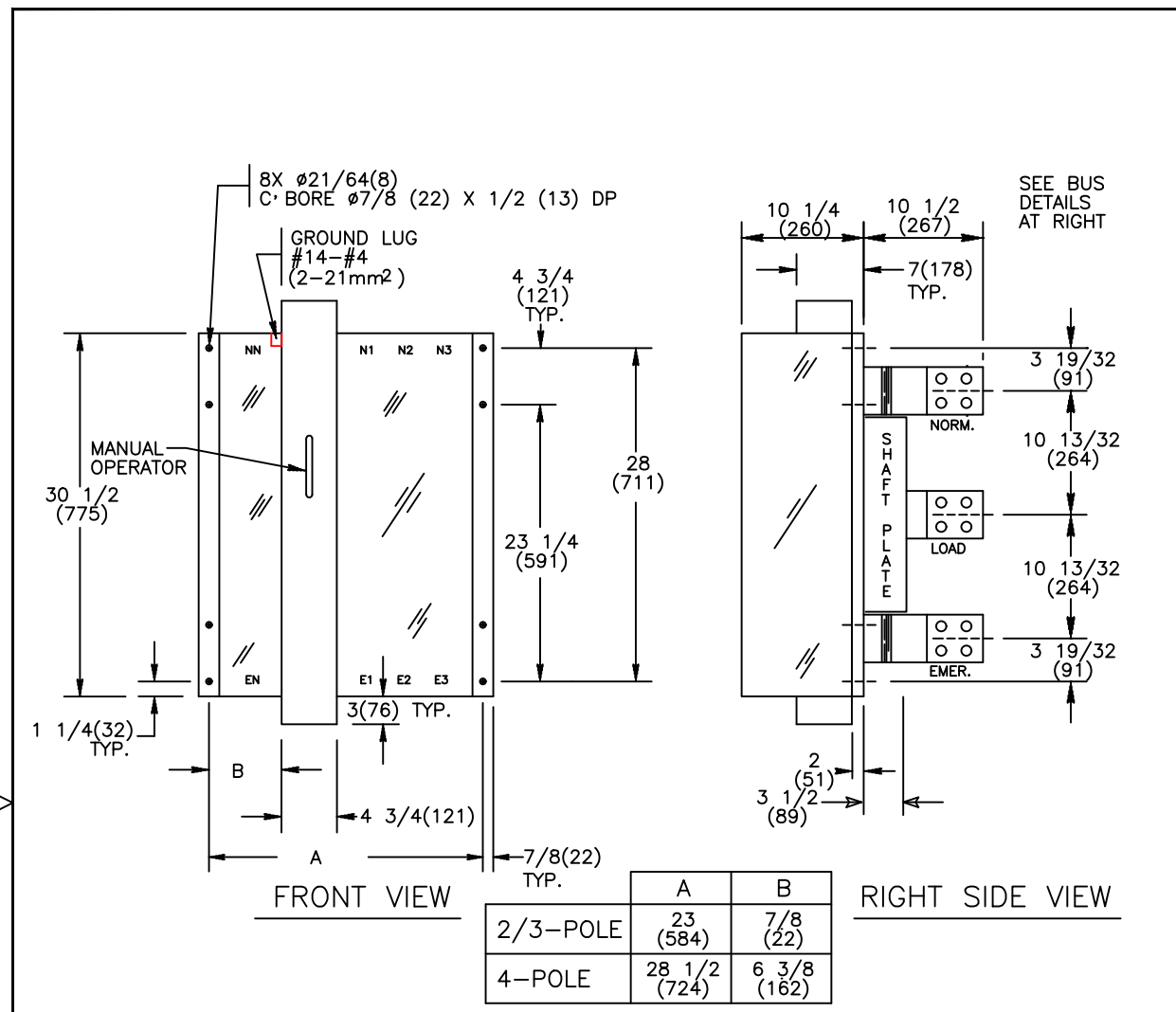
SIGNATURES	DATE
MODEL SG	02/22/08
Detailed	
CHECKED	
ENGRG SB	02/22/08
MFG	
QUALITY	
ISSUED	
DRAWING FILE: 90c-2011-a-1.dwg	
MODEL / ASSEMBLY FILE: ZTED/CT 3000 AMP - 2, 3, & 4 POLE	
# CTQs	⊖ CRITICAL TO QUALITY CHARACTERISTIC



TITLE
ZTED/CT 3000A 2,3,4 POLE
OPEN STYLE - REAR LUG

FIRST MADE FOR: ZTED/CT 3000 AMP -2, 3, & 4 POLE		
SIZE	CAGE CODE	DWG NO
B		90C-2011
SCALE: N/A		SHEET 1 of 3

AutoCad Generated



- NOTES:
- FOR 2-POLE SWITCHES, OMIT CENTER POLE.
 - OPEN TYPE SWITCH SUPPLIED WITH 6 FT. (1,8m) LONG HARNESS BETWEEN POWER AND CONTROL PANELS. HARNESS EXITS FROM LOWER RIGHT CORNER OF POWER PANEL.
 - DO NOT RUN CABLES IN FRONT OF SWITCH. RUN ALL CABLES ON RIGHT SIDE.
 - MAINTAIN ELECTRICAL CLEARANCE OF 1(25mm) MIN. BETWEEN LIVE METAL PARTS AND GROUNDED METAL.
 - ALL DIMENSIONS ARE FOR REFERENCE ONLY AND SHOWN IN INCHES(MILLIMETERS).
 - SEE "DOOR DETAIL" & "CONTROL PANEL" DIMENSIONS ON SHEET 3.

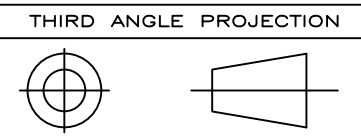
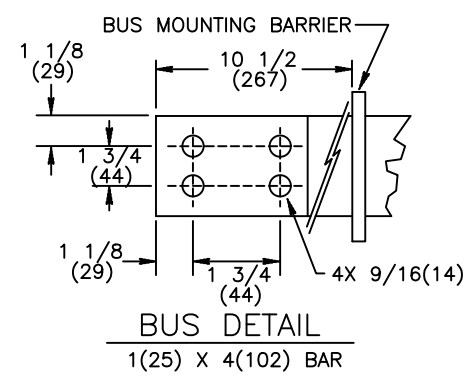
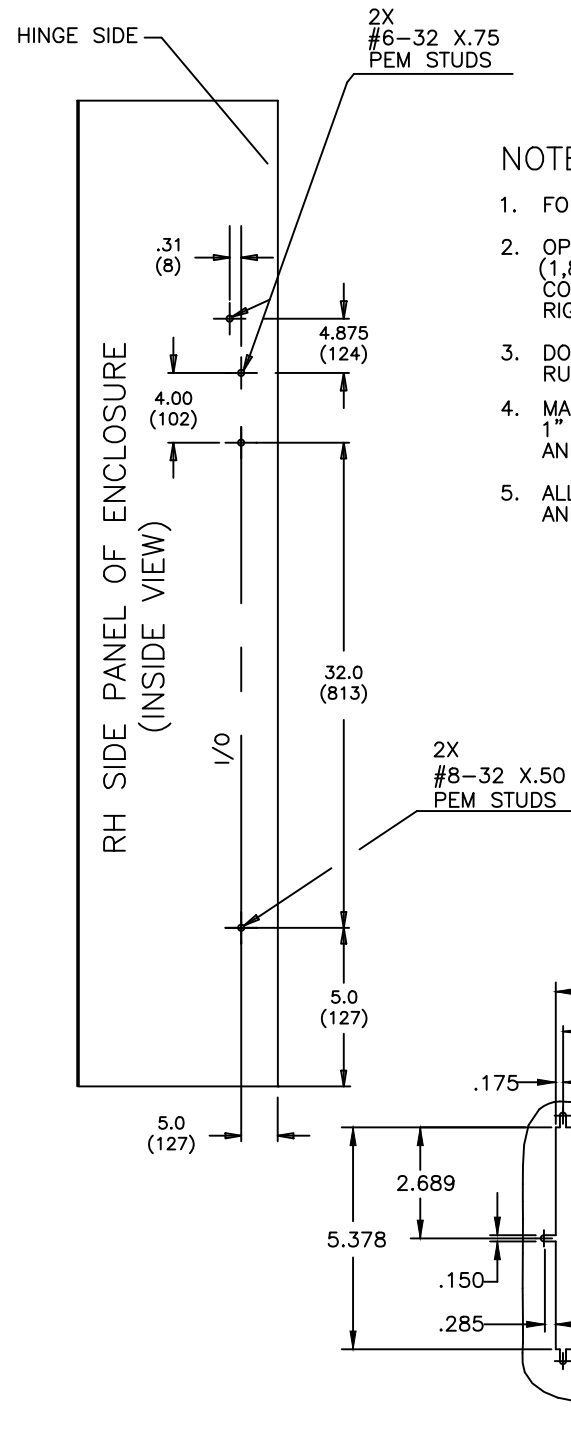
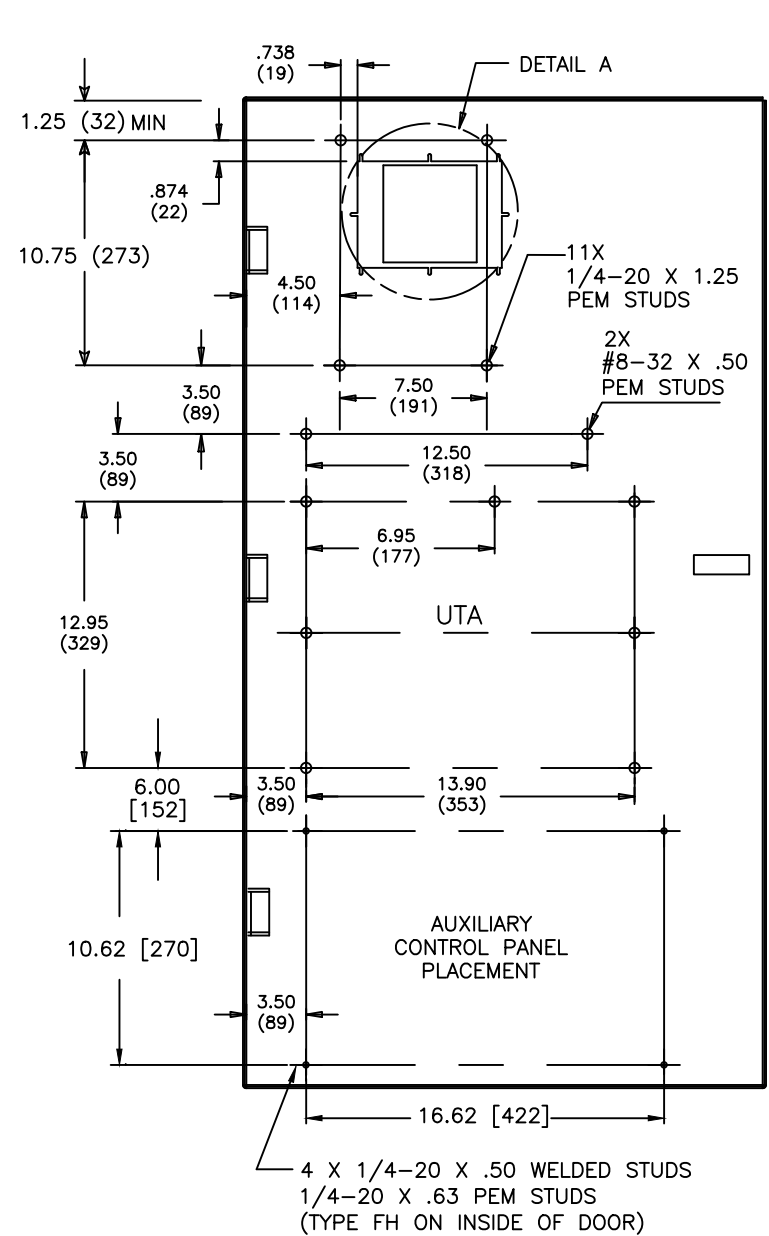


ABB PROPRIETARY AND CONFIDENTIAL INFORMATION

The information contained in the document has to be kept strictly confidential. Any unauthorized use, reproduction, distribution or disclosure to third parties is strictly forbidden. ABB reserves all rights regarding intellectual Property Rights. Copyright 2018 ABB. All rights reserved.

SIGNATURES		DATE	ABB
MODEL	SG	02/22/08	
DETAIL			
CHECKED			
ENGRG	SB	02/22/08	
MFG			TITLE
QUALITY			ZTED/CT 3000A 2,3,4 POLE OPEN STYLE - REAR BUS
ISSUED			FIRST MADE FOR: ZTED/CT 3000 AMP 2, 3, & 4 POLE
DRAWING FILE:	90c-2011-a-2.dwg	SIZE	CAGE CODE
MODEL / ASSEMBLY FILE:	ZTED/CT 3000 AMP 2, 3, & 4 POLE	B	DWG NO
# CTQs	⊖ CRITICAL TO QUALITY CHARACTERISTIC	SCALE:	N/A
AutoCad Generated			SHEET 2 of 3

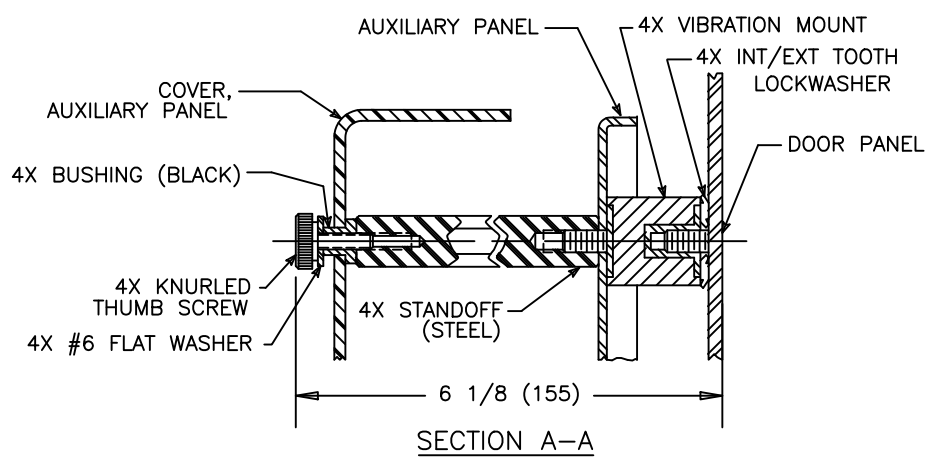
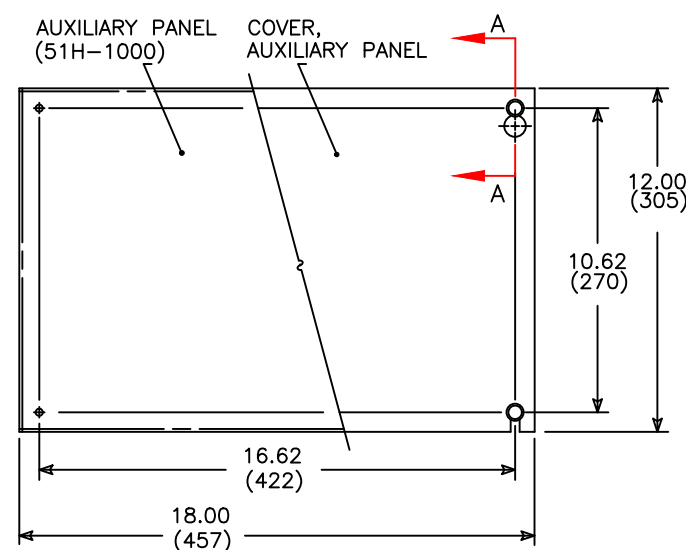
DOOR DETAIL (INSIDE VIEW)



NOTES:

1. FOR 2-POLE SWITCHES, OMIT CENTER POLE.
2. OPEN TYPE SWITCH SUPPLIED WITH 6 FT. (1.8m) LONG HARNESS BETWEEN POWER AND CONTROL PANELS. HARNESS EXITS FROM LOWER RIGHT CORNER OF POWER PANEL.
3. DO NOT RUN CABLES IN FRONT OF SWITCH. RUN ALL CABLES ON RIGHT SIDE.
4. MAINTAIN ELECTRICAL CLEARANCE OF 1" (25mm) MIN. BETWEEN LIVE METAL PARTS AND GROUNDED METAL.
5. ALL DIMENSIONS ARE FOR REFERENCE ONLY AND SHOWN IN INCHES(MILLIMETERS).

AUXILIARY CONTROL PANEL



SIGNATURES		DATE
MODEL	SG	02/22/08
DETAIL		
CHECKED		
ENGRG	SB	02/22/08
MFG		
QUALITY		
ISSUED		
DRAWING FILE: 90c-2011-a-3.dwg		
MODEL / ASSEMBLY FILE: ZTED/CT 3000 AMP 2, 3, & 4 POLE		
# CTQs	⊖ CRITICAL TO QUALITY CHARACTERISTIC	

ABB		
TITLE ZTED/CT 3000A 2,3,4 POLE OPEN STYLE - DOOR LAYOUT		
FIRST MADE FOR: ZTED/CT 3000 AMP 2, 3, & 4 POLE		
SIZE	CAGE CODE	DWG NO
B		90C-2011
SCALE: N/A	SHEET 3 of 3	

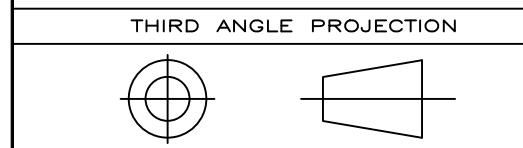


ABB PROPRIETARY AND CONFIDENTIAL INFORMATION

The information contained in the document has to be kept strictly confidential. Any unauthorized use, reproduction, distribution or disclosure to third parties is strictly forbidden. ABB reserves all rights regarding intellectual Property Rights. Copyright 2018 ABB. All rights reserved.

AutoCad Generated