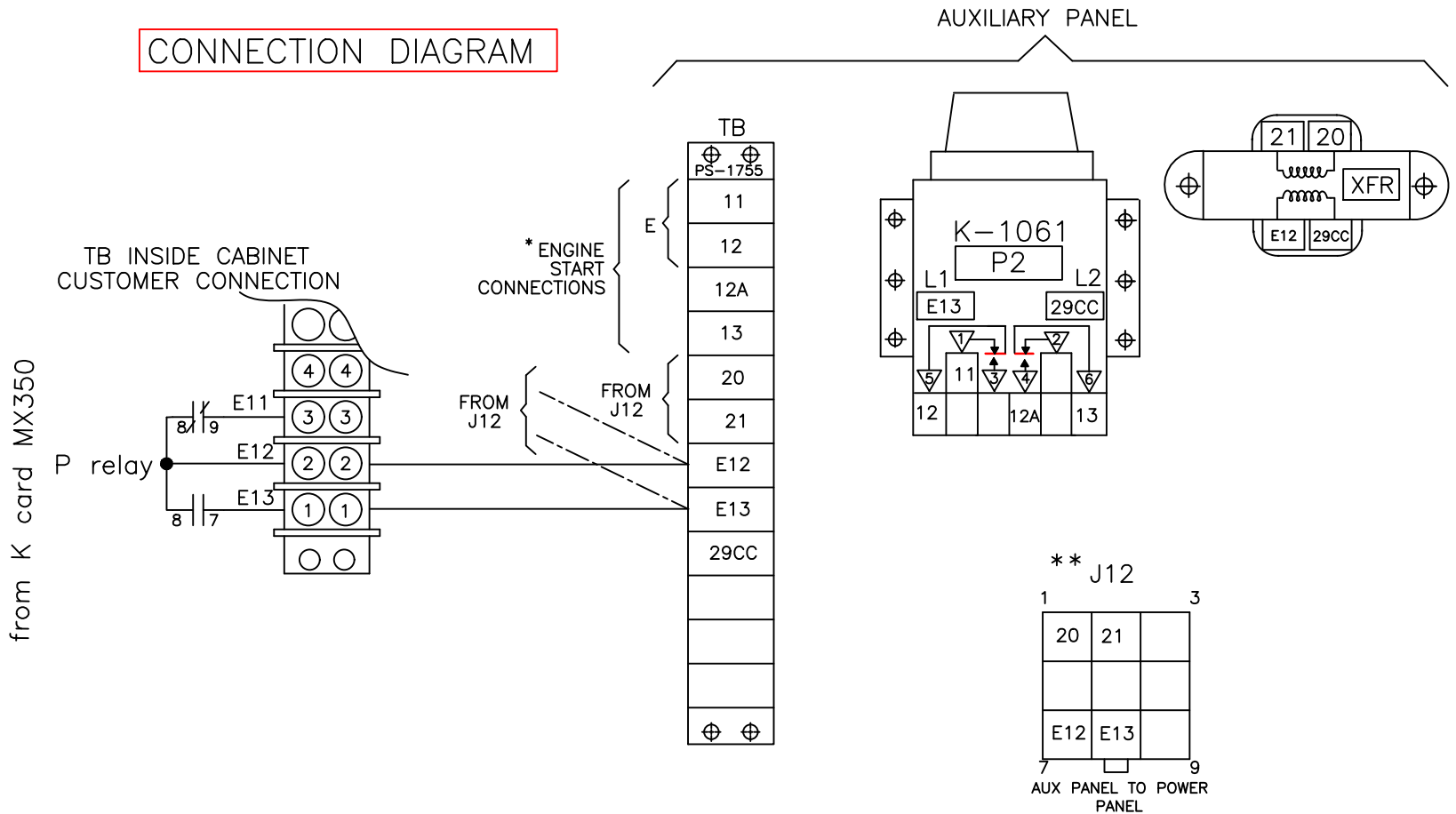
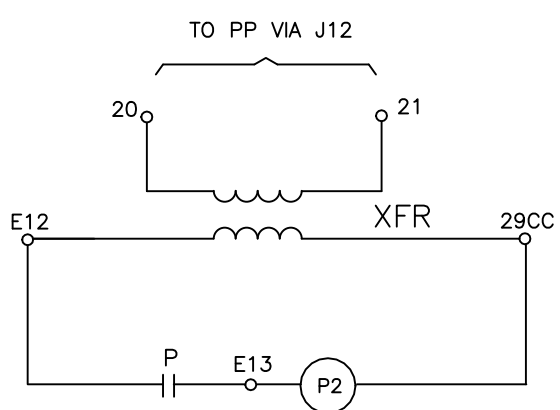


REVISIONS			
REV.	DESCRIPTION	DATE	APPROVED
1	C075076	09/05/19	AR MAS

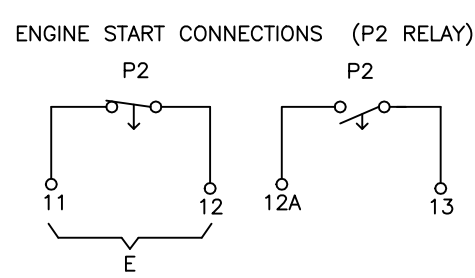
**CONNECTION DIAGRAM**



**SCHEMATIC**



**CUSTOMER CONNECTIONS**



RELAY	CONTACT	RATING
P2	E	10 AMP, 240 VAC 15 AMP, 30 VDC

**LEGEND**

P2.....Time relay to Engine start.....1/6 to 300 seconds.....K-1061, V-1562 LABEL  
 TB.....Terminal Block.....12 PT.....PS-1755

XFR..... Transformer 10VA.  
 K-3025.....230 VAC Systems  
 K-3018.....277 VAC Systems  
 K-3026.....480 VAC Systems  
 K-3022.....575 VAC Systems  
 K-3106.....208 VAC Systems  
 K-3115.....380 VAC Systems

J12 Plug Connections:  
 PS-5077...Pin Housing 9 Pt. - From Power Panel  
 PS-5078...Socket Receptacle 9 Pt. - From Aux Panel  
 PS-5083...Pin Male (4) - From Power Panel  
 PS-5084...Socket Female (4) - From Aux Panel.  
 PS-5085...Polarization Key

**OPERATION**

When Source 1 line fails, the P relay and the P2 timer de-energize. After the set time delay on the P2 timer, the P2 timer N.C. contact closes to start the Engine. When Source 1 line restores and the transfer switch is in Source 1 position, the P- relay and P2 timer energize and the Engine start contact (E) opens to shut down the Engine.

**INSTRUCTIONS**

1. Mount and wire "P2" timer, "XFR" transformer (as required), and terminal block on auxiliary control panel.
2. Set P Time delay on MX350 controller to minimum setting.
3. Set P2 Time delay to desired time delay to Engine start setting.
4. Wire from P relay to auxiliary control panel terminal block as shown.

\*\*For Non-Bypass product connect to 20 and 21 from J12 plug ATS Power Panel.

**LEGEND**

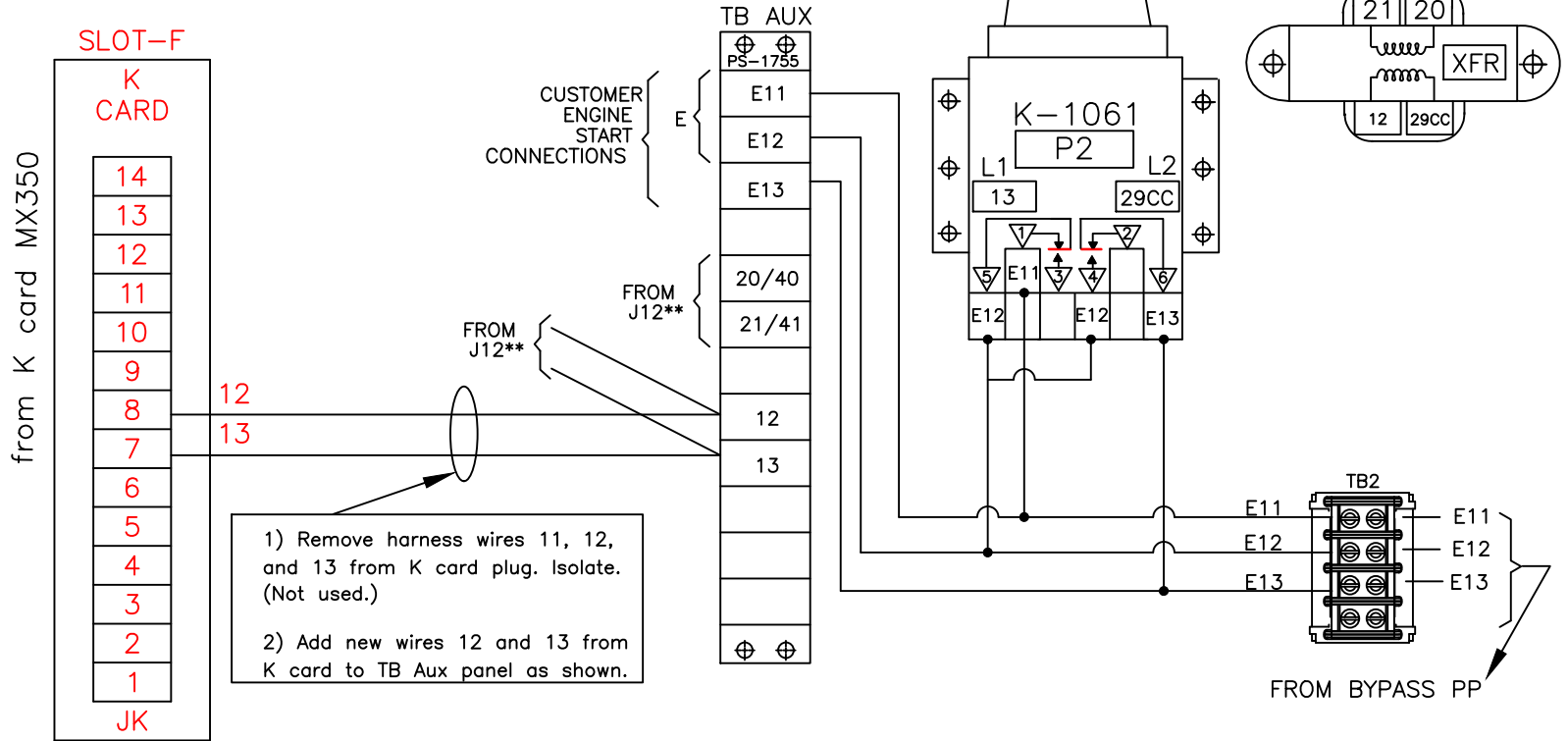
- WIRE CONNECTION POINT
- WIRE ON TERMINAL BLOCK
- WIRE IN INTER-CONNECT PLUG

**NOTES**

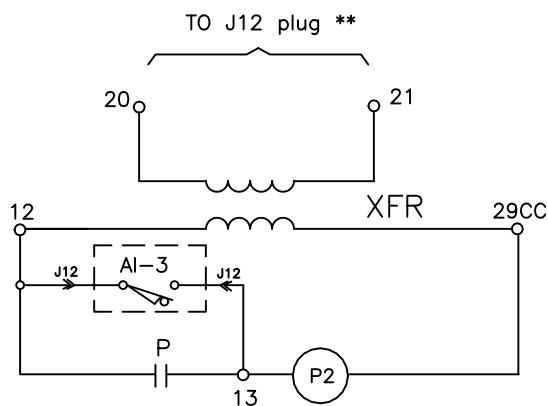
P2 ACCESSORY SHOWN WITH ATS IN SOURCE 1 POSITION AND NO POWER AVAILABLE.

ABB PROPRIETARY AND CONFIDENTIAL INFORMATION The information contained in the document has to be kept strictly confidential. Any unauthorized use, reproduction, distribution or disclosure to third parties is strictly forbidden. ABB reserves all rights regarding Intellectual Property Rights. Copyright 2018 ABB. All rights reserved.	FOR ADDITIONAL INFO REFER TO APPLIED PRACTICES UNLESS OTHERWISE SPECIFIED DIMENSIONS ARE IN INCHES TOLERANCES ON: 2 PL. DECIMALS ± .020 3 PL. DECIMALS ± .005 ANGLES ± 1' FRACTIONS ± 1/64 FINISH ✓	SIGNATURES MODEL VZ CHECKED ENGRG CEE MFG QUALITY ISSUED	DATE 01/02/08		
	THIRD ANGLE PROJECTION 	DRAWING FILE: 91r-2014.dwg MODEL / ASSEMBLY FILE: MX350	FIRST MADE FOR: SIZE B CAGE CODE DWG NO 91R-2014		TITLE <b>P2 ACCESSORY (NON-BYPASS)</b>
	AutoCad Generated	# CTQs CRITICAL TO QUALITY CHARACTERISTIC	SCALE: NA		SHEET 1 OF 3
					SHEET 1 OF 3

# CONNECTION DIAGRAM

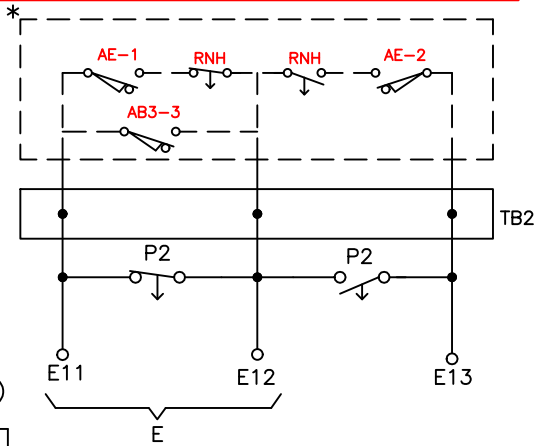


# SCHEMATIC



\* Located on bypass isolation scheme.

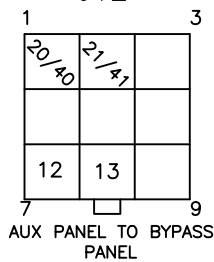
# CUSTOMER CONNECTIONS



ENGINE START CONNECTIONS (P2 RELAY)

RELAY	CONTACT	RATING
P2	E	10 AMP, 240 VAC 15 AMP, 30 VDC

\*\* J12



# LEGEND

P2.....Time relay to Engine start.....1/6 to 300 seconds.....K-1061, V-1562 LABEL  
TB.....Terminal Block.....12 PT.....PS-1755

XFR..... Transformer 10VA.  
K-3025.....230 VAC Systems  
K-3018.....277 VAC Systems  
K-3026.....480 VAC Systems  
K-3022.....575 VAC Systems  
K-3106.....208 VAC Systems  
K-3115.....380 VAC Systems

J12 Plug Connections:

PS-5077...Pin Housing 9 Pt. - From Power Panel  
PS-5078...Socket Receptacle 9 Pt. - From Aux Panel  
PS-5083...Pin Male (4) - From Power Panel  
PS-5084...Socket Female (4) - From Aux Panel.  
PS-5085...Polarization Key

# OPERATION

When Source 1 line fails, the P relay and the P2 timer de-energize. After the set time delay on the P2 timer, the P2 timer N.C. contact closes to start the Engine. When Source 1 line restores and the transfer switch is in Source 1 position, the P- relay and P2 timer energize and the Engine start contact (E) opens to shut down the Engine.

# INSTRUCTIONS

1. Mount and wire "P2" timer, "XFR" transformer (as required), AI-3 limit switch from Bypass panel, and terminal block TB Aux, on auxiliary control panel.
2. Set P Time delay on MX350 controller to minimum setting.
3. Set P2 Time delay to desired time delay to Engine start setting.
4. Wire from P relay to auxiliary control panel terminal block as shown.

\*\* For Bypass product connect to 20/40, 21/41, 12, and 13 on Bypass Power Panel using J12 plug

# LEGEND

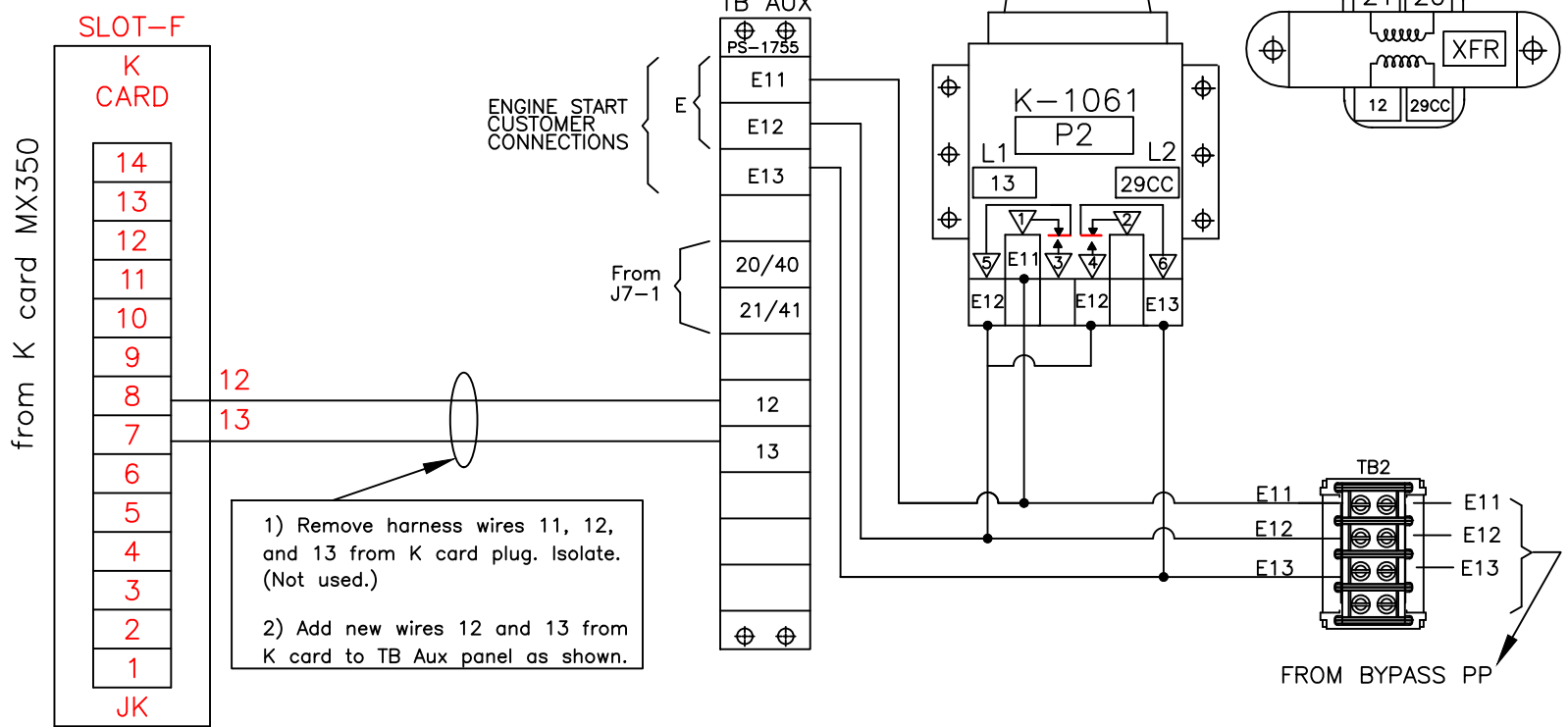
- WIRE CONNECTION POINT
- WIRE ON TERMINAL BLOCK
- WIRE IN INTER-CONNECT PLUG

# NOTES

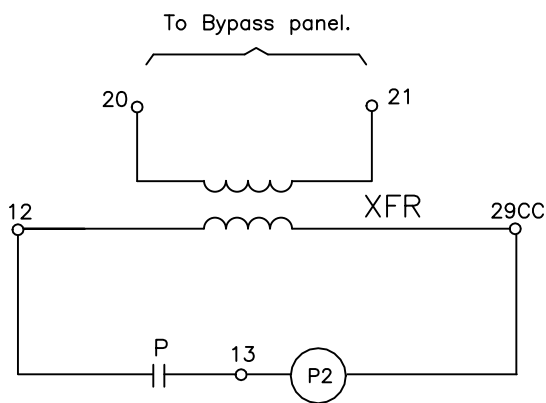
P2 ACCESSORY SHOWN WITH ATS IN SOURCE 1 POSITION AND NO POWER AVAILABLE.

ABB PROPRIETARY AND CONFIDENTIAL INFORMATION The information contained in the document has to be kept strictly confidential. Any unauthorized use, reproduction, distribution or disclosure to third parties is strictly forbidden. ABB reserves all rights regarding Intellectual Property Rights. Copyright 2018 ABB. All rights reserved.	FOR ADDITIONAL INFO REFER TO APPLIED PRACTICES UNLESS OTHERWISE SPECIFIED DIMENSIONS ARE IN INCHES TOLERANCES ON: 2 PL. DECIMALS ± .020 3 PL. DECIMALS ± .005 ANGLES ± 1° FRACTIONS ± 1/64 FINISH ✓	SIGNATURES MODEL VZ DATE 01/02/08 CHECKED ENGRG CEE MFG QUALITY ISSUED	TITLE P2 ACCESSORY (BYPASS-VERTICAL)	
	THIRD ANGLE PROJECTION 	DRAWING FILE: 91r-2014.dwg MODEL / ASSEMBLY FILE: MX350	FIRST MADE FOR: SIZE B CAGE CODE DWG NO 91R-2014	SCALE: NA SHEET 2 OF 3
	AutoCad Generated	# CTQs CRITICAL TO QUALITY CHARACTERISTIC	ABB	SHEET 2 OF 3
	AutoCad Generated	# CTQs CRITICAL TO QUALITY CHARACTERISTIC	ABB	SHEET 2 OF 3

# CONNECTION DIAGRAM

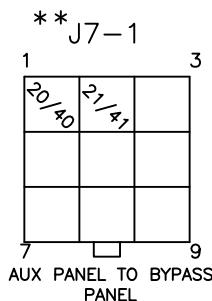


# SCHEMATIC



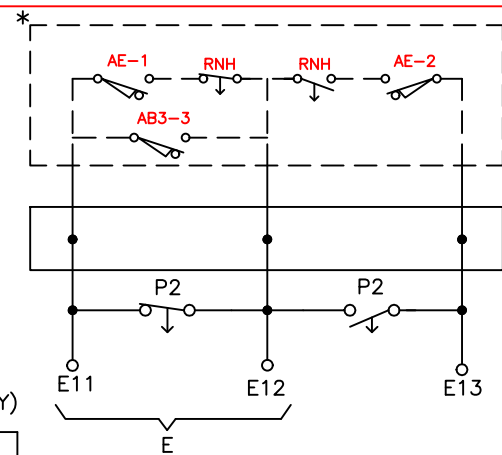
\* Located on bypass isolation scheme.

# CUSTOMER CONNECTIONS



ENGINE START CONNECTIONS (P2 RELAY)

RELAY	CONTACT	RATING
P2	E	10 AMP, 240 VAC 15 AMP, 30 VDC



## LEGEND

P2.....Time relay to Engine start.....1/6 to 300 seconds.....K-1061, V-1562 LABEL  
 TB.....Terminal Block.....12 PT.....PS-1755

XFR..... Transformer 10VA.  
 K-3025.....230 VAC Systems  
 K-3018.....277 VAC Systems  
 K-3026.....480 VAC Systems  
 K-3022.....575 VAC Systems  
 K-3106.....208 VAC Systems  
 K-3115.....380 VAC Systems

### J12 Plug Connections:

PS-5077...Pin Housing 9 Pt. - From Power Panel  
 PS-5078...Socket Receptacle 9 Pt. - From Aux Panel  
 PS-5083...Pin Male (2) - From Power Panel  
 PS-5084...Socket Female (2) - From Aux Panel.  
 PS-5085...Polarization Key

## OPERATION

When Source 1 line fails, the P relay and the P2 timer de-energize. After the set time delay on the P2 timer, the P2 timer N.C. contact closes to start the Engine. When Source 1 line restores and the transfer switch is in Source 1 position, the P- relay and P2 timer energize and the Engine start contact (E) opens to shut down the Engine.

## INSTRUCTIONS

1. Mount and wire "P2" timer, "XFR" transformer (as required), and terminal block TB Aux, on auxiliary control panel.
2. Set P Time delay on MX350 controller to minimum setting.
3. Set P2 Time delay to desired time delay to Engine start setting.
4. Wire from P relay to auxiliary control panel terminal block as shown.

\*\* Connect to 20/40 and 21/41 on Bypass Power Panel using J7-1 plug

## LEGEND

- WIRE CONNECTION POINT
- WIRE ON TERMINAL BLOCK
- WIRE IN INTER-CONNECT PLUG

## NOTES

P2 ACCESSORY SHOWN WITH ATS IN SOURCE 1 POSITION AND NO POWER AVAILABLE.

ABB PROPRIETARY AND CONFIDENTIAL INFORMATION The information contained in the document has to be kept strictly confidential. Any unauthorized use, reproduction, distribution or disclosure to third parties is strictly forbidden. ABB reserves all rights regarding Intellectual Property Rights. Copyright 2018 ABB. All rights reserved.	FOR ADDITIONAL INFO REFER TO APPLIED PRACTICES UNLESS OTHERWISE SPECIFIED DIMENSIONS ARE IN INCHES TOLERANCES ON: 2 PL. DECIMALS ± .020 3 PL. DECIMALS ± .005 ANGLES ± 1° FRACTIONS ± 1/64 FINISH ✓	SIGNATURES MODEL VZ DETAIL CHECKED ENGRG CEE MFG QUALITY ISSUED	DATE 01/02/08		TITLE P2 ACCESSORY (BYPASS-HORIZ)
	THIRD ANGLE PROJECTION 	DRAWING FILE: 91r-2014.dwg MODEL / ASSEMBLY FILE: MX350	FIRST MADE FOR: SIZE B CAGE CODE DWG NO		91R-2014
	AutoCad Generated	# CTQs CRITICAL TO QUALITY CHARACTERISTIC	SCALE: NA		SHEET 3 OF 3
					SHEET 3 OF 3