



# Transformer

by ABB



\*1M000000\*

**Catalog Number**      **Type QL**  
**9T10A1001G03**

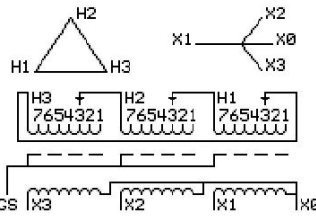
**15.0 KVA    60 HZ    3 PH    3.8 % IMP**  
**40 C AMB.    150 C RISE    220 C SYSTEM    IS-19C**

*Note: Design is based on 15.00KVA & 115C Rise 3.5% Imp.*

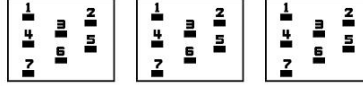
**PRIMARY (H)    480 VOLTS (LINE-LINE)**  
**SECONDARY (X)    208 VOLTS (LINE-LINE)**  
**120 VOLTS (LINE-NEUTRAL)**

**JUMPER CONNECTION**

TAP	VOLTS
1	504
2	493
3	480
4	468
5	455
6	445
7	432



### COIL TAP ARRANGEMENT



**NET WGT**  
231 LB  
104.8 Kg

**INSPECTION & FINAL TEST**  
**NOG**  
89017  
UX71A  
N139!  
092021



LISTED 769G

ELECTROSTATIC GROUND SHIELD IN EACH PHASE

ENCLOSURE TYPE 2 (IP20). OR RAINPROOF TYPE 3R (IP22) WHEN PROVIDED SHIELD 9T18Y1071G06

**BEFORE HANDLING, INSTALLING AND OPERATING, SEE INSTRUCTION 475A667AAP001**

ALUMINUM CONDUCTOR    PRIMARY: 10 KV BIL    SECONDARY: 10 KV BIL

IN ACCORDANCE WITH NEC SECTION 450-9, ALLOW AT LEAST SIX INCHES CLEARANCE FOR VENTILATION.

CHECK ADDITIONAL NEC AND LOCAL CODE

ASSEMBLED IN MEXICO

**X3    H3    X2    H2    X1    H1    X0**

Note: standard

Outline: 303B111GEUXP71A

NEMA CLASS AA DRY TYPE TRANSFORMER

Meets DOE 2016 efficiency

X0  
X1  
X2  
X3

H1  
H2  
H3

X0  
X1  
X2  
X3

H1  
H2  
H3

X0  
X1  
X2  
X3

H1  
H2  
H3

X0  
X1  
X2  
X3

H1  
H2  
H3

\*2M000000\*

\*3M000000\*