



# Transformer

—  
by ABB



\*1M000000\*

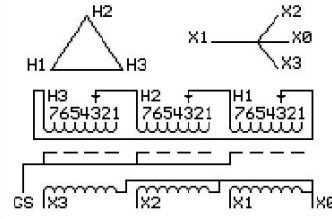
**Catalog Number**      **Type QL**  
**9T10A1001G04**

15.0 KVA    60 HZ    3 PH    3.8 % IMP  
40 C AMB.    150 C RISE    220 C SYSTEM    IS-19C

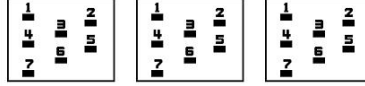
*Note: Design is based on 15.00KVA & 115C Rise 3.5% Imp.*

PRIMARY (H)    480 VOLTS (LINE-LINE)  
SECONDARY (X)    208 VOLTS (LINE-LINE)  
                                 120 VOLTS (LINE-NEUTRAL)

JUMPER CONNECTION	
TAP	VOLTS
1	504
2	493
3	480
4	468
5	455
6	445
7	432



### COIL TAP ARRANGEMENT



NET WGT  
231 LB  
104.8 Kg  
89018  
UX71A

INSPECTION & FINAL TEST  
NOG  
N139!  
092021



ELECTROSTATIC GROUND SHIELD IN EACH PHASE

ENCLOSURE TYPE 2 (IP20). OR RAINPROOF TYPE 3R (IP22) WHEN PROVIDED SHIELD 9T18Y1071G06

**BEFORE HANDLING, INSTALLING AND OPERATING, SEE INSTRUCTION 475A667AAP001**  
ALUMINUM CONDUCTOR    PRIMARY: 10 KV BIL    SECONDARY: 10 KV BIL  
IN ACCORDANCE WITH NEC SECTION 450-9, ALLOW AT LEAST SIX INCHES CLEARANCE FOR VENTILATION.  
CHECK ADDITIONAL NEC AND LOCAL CODE

NEMA CLASS AA DRY TYPE TRANSFORMER

Meets DOE 2016 efficiency

### ASSEMBLED IN MEXICO

X3   H3   X2   H2   X1   H1   X0

Note: **standard**

Outline: 303B111GEUXP71A

X0  
X1  
X2  
X3  
H1  
H2  
H3  
X0  
X1  
X2  
X3  
H1  
H2  
H3



\*2M000000\*



\*3M000000\*