



# Transformer

by ABB



\*1M000000\*

**Catalog Number**      **Type QL**

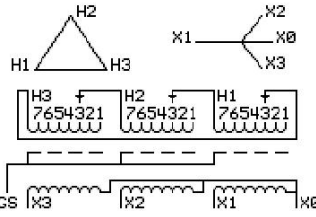
**9T10A1001G34**

**15.0 KVA    60 HZ    3 PH    3.5 % IMP**  
**40 C AMB.    115 C RISE    220 C SYSTEM    IS-19C**

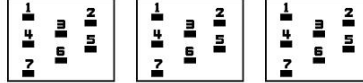
**PRIMARY (H)    480 VOLTS (LINE-LINE)**  
**SECONDARY (X)    208 VOLTS (LINE-LINE)**  
**120 VOLTS (LINE-NEUTRAL)**

**JUMPER CONNECTION**

TAP	VOLTS
1	504
2	493
3	480
4	468
5	455
6	445
7	432



**COIL TAP ARRANGEMENT**



**NET WGT**  
231 LB  
104.8 Kg  
89018  
UX71A

**INSPECTION & FINAL TEST**  
NOG  
N139!  
092021



ELECTROSTATIC GROUND SHIELD IN EACH PHASE

ENCLOSURE TYPE 2 (IP20). OR RAINPROOF TYPE 3R (IP22) WHEN PROVIDED SHIELD 9T18Y1071G06

**BEFORE HANDLING, INSTALLING AND OPERATING, SEE INSTRUCTION 475A667AAP001**  
ALUMINUM CONDUCTOR    PRIMARY: 10 KV BIL    SECONDARY: 10 KV BIL  
IN ACCORDANCE WITH NEC SECTION 450-9, ALLOW AT LEAST SIX INCHES CLEARANCE FOR VENTILATION.  
CHECK ADDITIONAL NEC AND LOCAL CODE

NEMA CLASS AA DRY TYPE TRANSFORMER

Meets DOE 2016 efficiency

ASSEMBLED IN MEXICO

**X3    H3    X2    H2    X1    H1    X0**

Note: **standard**

Outline: 303B111GEUXP71A

**X0**

**X1**

**H1**

**X2**

**H2**

**X3**

**H3**

**X0**

**X1**

**H1**

**X2**

**H2**

**X3**

**H3**



\*2M000000\*



\*3M000000\*