



Transformer

—
by ABB



1M000000

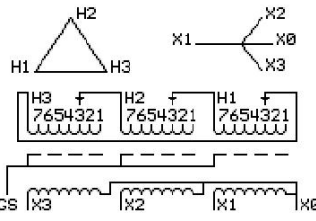
Catalog Number **Type QL**
9T10A1003G03

45.0 KVA 60 HZ 3 PH 3.3 % IMP
40 C AMB. 150 C RISE 220 C SYSTEM IS-19C

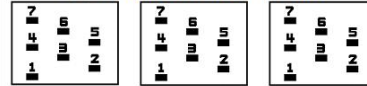
Note: Design is based on 45.00KVA & 115C Rise 3.1% Imp.

PRIMARY (H) 480 VOLTS (LINE-LINE)
SECONDARY (X) 208 VOLTS (LINE-LINE)
 120 VOLTS (LINE-NEUTRAL)

JUMPER CONNECTION	TAP VOLTS
1	504
2	490
3	480
4	467
5	457
6	444
7	434



COIL TAP ARRANGEMENT



NET WGT
444 LB **INSPECTION & FINAL TEST**
201.4 Kg **NOG**
88971 **N137!**
UX73A **091021**



ELECTROSTATIC GROUND SHIELD IN EACH PHASE

ENCLOSURE TYPE 2 (IP20). OR RAINPROOF TYPE 3R (IP22) WHEN PROVIDED SHIELD 9T18Y1072G06

BEFORE HANDLING, INSTALLING AND OPERATING, SEE INSTRUCTION 475A667AAP001
ALUMINUM CONDUCTOR PRIMARY: 10 KV BIL SECONDARY: 10 KV BIL
IN ACCORDANCE WITH NEC SECTION 450-9, ALLOW AT LEAST SIX INCHES CLEARANCE FOR VENTILATION.
CHECK ADDITIONAL NEC AND LOCAL CODE

ASSEMBLED IN MEXICO

X3 H3 X2 H2 X1 H1 X0

Note: standard

Outline: 303B111GEUXP73A

NEMA CLASS AA DRY TYPE TRANSFORMER

Meets DOE 2016 efficiency

	X0					
	H1	-				
	X1	-				
	H2	-				
	X2	-				
	H3	-				
	X3	-				
	H1	-				
	X1	-				
	H2	-				
	X2	-				
	H3	-				
	X3	-				

2M000000

3M000000