



# Transformer

—  
by ABB



\*1M000000\*

**Catalog Number**      **Type QL**

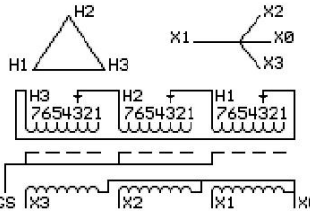
**9T10A1003G33**

45.0 KVA    60 HZ    3 PH    3.1 % IMP  
40 C AMB.    115 C RISE    220 C SYSTEM    IS-19C

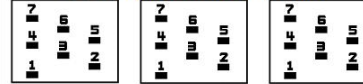
PRIMARY (H)      480 VOLTS (LINE-LINE)  
SECONDARY (X)    208 VOLTS (LINE-LINE)  
                              120 VOLTS (LINE-NEUTRAL)

**JUMPER CONNECTION**

TAP	VOLTS
1	504
2	490
3	480
4	467
5	457
6	444
7	434



**COIL TAP ARRANGEMENT**



**NET WGT**  
444 LB  
201.4 Kg  
88971 UX73A

**INSPECTION & FINAL TEST**  
NOG  
N137!  
091021



ELECTROSTATIC GROUND SHIELD IN EACH PHASE

ENCLOSURE TYPE 2 (IP20). OR RAINPROOF TYPE 3R (IP22) WHEN PROVIDED SHIELD 9T18Y1072G06

**ASSEMBLED IN MEXICO**

**BEFORE HANDLING, INSTALLING AND OPERATING, SEE INSTRUCTION 475A667AAP001**  
ALUMINUM CONDUCTOR    PRIMARY: 10 KV BIL    SECONDARY: 10 KV BIL  
IN ACCORDANCE WITH NEC SECTION 450-9, ALLOW AT LEAST SIX INCHES CLEARANCE FOR VENTILATION.  
CHECK ADDITIONAL NEC AND LOCAL CODE

**X3   H3   X2   H2   X1   H1   X0**  
-   -   -   -   -   -   -  
**Note: standard**

Outline: 303B111GEUXP73A

NEMA CLASS AA DRY TYPE TRANSFORMER

Meets DOE 2016 efficiency

X0  
X1  
H1  
X2  
H2  
X3  
H3



\*2M000000\*



\*3M000000\*