



Transformer

by ABB



Catalog Number
9T10A1003G34

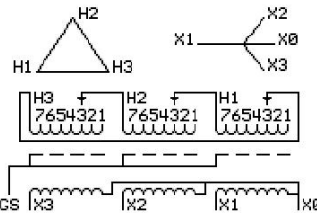
Type QL

45.0 KVA 60 HZ 3 PH 3.1 % IMP
40 C AMB. 115 C RISE 220 C SYSTEM IS-19C

Note: Design is based on 45.00KVA & 115C Rise 3.1% Imp.

PRIMARY (H) 480 VOLTS (LINE-LINE)
SECONDARY (X) 208 VOLTS (LINE-LINE)
 120 VOLTS (LINE-NEUTRAL)

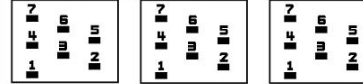
JUMPER CONNECTION	TAP VOLTS
1	504
2	490
3	480
4	467
5	457
6	444
7	434



NET WGT INSPECTION & FINAL TEST
444 LB 201.4 Kg
88971 NOG
UX73A N137!
091021



COIL TAP ARRANGMENT



ELECTROSTATIC GROUND SHIELD IN EACH PHASE

ENCLOSURE TYPE 2 (IP20). OR RAINPROOF TYPE 3R (IP22) WHEN PROVIDED SHIELD 9T18Y1072G06

ASSEMBLED IN MEXICO

BEFORE HANDLING, INSTALLING AND OPERATING, SEE INSTRUCTION 475A667AAP001
ALUMINUM CONDUCTOR PRIMARY: 10 KV BIL SECONDARY: 10 KV BIL
IN ACCORDANCE WITH NEC SECTION 450-9, ALLOW AT LEAST SIX INCHES CLEARANCE FOR VENTILATION.
CHECK ADDITIONAL NEC AND LOCAL CODE

X3	H3	X2	H2	X1	H1	X0
-	-	-	-	-	-	-

Note: standard

NEMA CLASS AA DRY TYPE TRANSFORMER

Meets DOE 2016 efficiency

Outline: 303B111GEUXP73A

X3	H3	X2	H2	X1	H1	X0
X3	H3	X2	H2	X1	H1	X0