



Transformer

by ABB



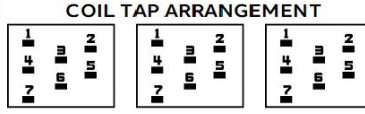
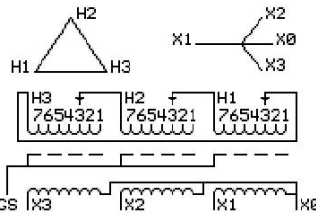
1M000000

Catalog Number **Type QL**
9T10A1003G66

45.0 KVA **60 HZ** **3 PH** **4.3 % IMP**
40 C AMB. **80 C RISE** **220 C SYSTEM** **IS-19C**

PRIMARY (H) **480 VOLTS (LINE-LINE)**
SECONDARY (X) **208 VOLTS (LINE-LINE)**
 120 VOLTS (LINE-NEUTRAL)

JUMPER CONNECTION	
TAP	VOLTS
1	505
2	493
3	480
4	468
5	456
6	443
7	431



NET WGT
561 LB
254.5 Kg
89033
UY74A

INSPECTION & FINAL TEST
NOG
N137!
091021



ELECTROSTATIC GROUND SHIELD IN EACH PHASE

ENCLOSURE TYPE 2 (IP20). OR RAINPROOF TYPE 3R (IP22) WHEN PROVIDED SHIELD 9T18Y1074G06

ASSEMBLED IN MEXICO

BEFORE HANDLING, INSTALLING AND OPERATING, SEE INSTRUCTION 475A667AAP001

ALUMINUM CONDUCTOR PRIMARY: 10 KV BIL SECONDARY: 10 KV BIL

IN ACCORDANCE WITH NEC SECTION 450-9, ALLOW AT LEAST SIX INCHES CLEARANCE FOR VENTILATION.

CHECK ADDITIONAL NEC AND LOCAL CODE

X3 H3 X2 H2 X1 H1

- - - - - -

Note: X0 at the bottom

Outline: 303B111GEUYP74A

NEMA CLASS AA DRY TYPE TRANSFORMER

Meets DOE 2016 efficiency

X3 H3 X2 H2 X1 H1
- - - - -
X3 H3 X2 H2 X1 H1
- - - - -

