



Transformer

—
by ABB



1M000000

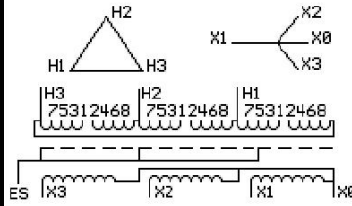
Catalog Number **Type QL**
9T10A1007G63

225.0 KVA **60 HZ** **3 PH** **4.2 % IMP**
40 C AMB. **80 C RISE** **220 C SYSTEM** **IS-19C**

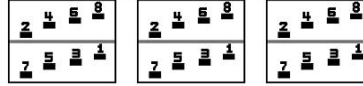
Note: Design is based on 300.0KVA & 115C Rise 5.1% Imp.

PRIMARY (H) **480 VOLTS (LINE-LINE)**
SECONDARY (X) **208 VOLTS (LINE-LINE)**
 120 VOLTS (LINE-NEUTRAL)

JUMPER CONNECTION	
TAP	VOLTS
1-2	507
2-3	494
3-4	480
4-5	467
5-6	454
6-7	447
7-8	434



COIL TAP ARRANGEMENT



NET WGT	INSPECTION & FINAL TEST
1985 LB	
900.4 Kg	NOG
89085	N137!
DX78A	091021



ELECTROSTATIC GROUND SHIELD IN EACH PHASE

ENCLOSURE TYPE 2 (IP20). OR RAINPROOF TYPE 3R (IP22) WHEN PROVIDED SHIELD 9T18Y1077G06

ASSEMBLED IN MEXICO

BEFORE HANDLING, INSTALLING AND OPERATING, SEE INSTRUCTION 475A667AAP009
ALUMINUM CONDUCTOR **PRIMARY: 10 KV BIL** **SECONDARY: 10 KV BIL**
IN ACCORDANCE WITH NEC SECTION 450-9, ALLOW AT LEAST SIX INCHES CLEARANCE FOR VENTILATION.
CHECK ADDITIONAL NEC AND LOCAL CODE

Note:

Outline: 303B112GEDXP78A

NEMA CLASS AA DRY TYPE TRANSFORMER

Meets DOE 2016 efficiency



2M000000



3M000000