

GE Transformer

—
by ABB



1M000000

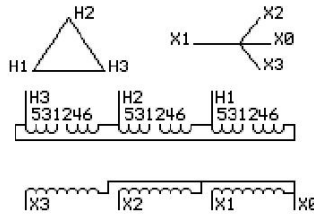
Catalog Number **Type QL**
9T10A1009

500.0 KVA 60 HZ 3 PH 5.1 % IMP
40 C AMB. 150 C RISE 220 C SYSTEM IS-19C

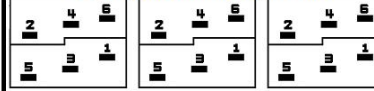
JUMPER CONNECTION

TAP	VOLTS
1-2	506
2-3	489
3-4	480
4-5	472
5-6	455

PRIMARY (H) 480 VOLTS (LINE-LINE)
SECONDARY (X) 208 VOLTS (LINE-LINE)
 120 VOLTS (LINE-NEUTRAL)



COIL TAP ARRANGEMENT



NET WGT **INSPECTION & FINAL TEST**
2713 LB
1230.6 Kg
88683 **NOG**
DY79A N137!
091021



ENCLOSURE TYPE 2 (IP20). OR RAINPROOF TYPE 3R (IP22) WHEN PROVIDED SHIELD 9T18Y1079G06

ASSEMBLED IN MEXICO

BEFORE HANDLING, INSTALLING AND OPERATING, SEE INSTRUCTION 475A667AAP009
ALUMINUM CONDUCTOR PRIMARY: 10 KV BIL SECONDARY: 10 KV BIL
IN ACCORDANCE WITH NEC SECTION 450-9, ALLOW AT LEAST SIX INCHES CLEARANCE FOR VENTILATION.
CHECK ADDITIONAL NEC AND LOCAL CODE

Note:

Outline: 303B112GEDYP79A

NEMA CLASS AA DRY TYPE TRANSFORMER

Meets DOE 2016 efficiency

