



Transformer

—
by ABB



1M000000

Catalog Number **Type QL**
9T10A1009G05

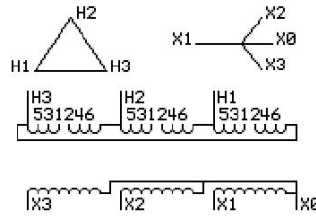
500.0 KVA 60 HZ 3 PH 5.1 % IMP
40 C AMB. 150 C RISE 220 C SYSTEM IS-19C

Note: Design is based on 500.0KVA & 150C Rise 5.1% Imp.

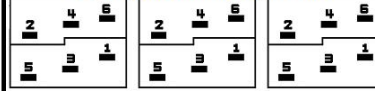
PRIMARY (H) 480 VOLTS (LINE-LINE)
SECONDARY (X) 208 VOLTS (LINE-LINE)
 120 VOLTS (LINE-NEUTRAL)

JUMPER CONNECTION

| TAP | VOLTS |
|-----|-------|
| 1-2 | 506 |
| 2-3 | 489 |
| 3-4 | 480 |
| 4-5 | 472 |
| 5-6 | 455 |



COIL TAP ARRANGEMENT



NET WGT **INSPECTION & FINAL TEST**
2713 LB
1230.6 Kg
88683 **NOG**
DY79A **N139!**
 092021



LISTED 769G

ENCLOSURE TYPE 2 (IP20). OR RAINPROOF TYPE 3R (IP22) WHEN PROVIDED SHIELD 9T18Y1079G06

ASSEMBLED IN MEXICO

BEFORE HANDLING, INSTALLING AND OPERATING, SEE INSTRUCTION 475A667AAP009
ALUMINUM CONDUCTOR PRIMARY: 10 KV BIL SECONDARY: 10 KV BIL
IN ACCORDANCE WITH NEC SECTION 450-9, ALLOW AT LEAST SIX INCHES CLEARANCE FOR VENTILATION.
CHECK ADDITIONAL NEC AND LOCAL CODE

Note:

Outline: 303B112GEDYP79A

NEMA CLASS AA DRY TYPE TRANSFORMER

Meets DOE 2016 efficiency



2M000000



3M000000