



# Transformer

by ABB



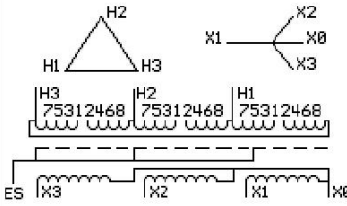
\*1M000000\*

**Catalog Number** 9T10A1025G63 **Type** QL

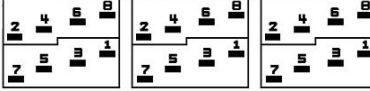
112.5 KVA 60 HZ 3 PH 3.5 % IMP  
40 C AMB. 80 C RISE 220 C SYSTEM IS-19C

PRIMARY (H) 480 VOLTS (LINE-LINE)  
SECONDARY (X) 220 VOLTS (LINE-LINE)  
127 VOLTS (LINE-NEUTRAL)

JUMPER CONNECTION	TAP VOLTS
1-2	503
2-3	492
3-4	480
4-5	469
5-6	458
6-7	442
7-8	431



### COIL TAP ARRANGEMENT



**NET WGT**  
1030 LB  
467.2 Kg  
89107  
DY76A

**INSPECTION & FINAL TEST**  
NOG  
N137!  
091021



LISTED 769G

ELECTROSTATIC GROUND SHIELD IN EACH PHASE

ENCLOSURE TYPE 2 (IP20). OR RAINPROOF TYPE 3R (IP22) WHEN PROVIDED SHIELD 9T18Y1076G06

**BEFORE HANDLING, INSTALLING AND OPERATING, SEE INSTRUCTION 475A667AAP001**  
ALUMINUM CONDUCTOR PRIMARY: 10 KV BIL SECONDARY: 10 KV BIL  
IN ACCORDANCE WITH NEC SECTION 450-9, ALLOW AT LEAST SIX INCHES CLEARANCE FOR VENTILATION.  
CHECK ADDITIONAL NEC AND LOCAL CODE

NEMA CLASS AA DRY TYPE TRANSFORMER

Meets DOE 2016 efficiency

ASSEMBLED IN MEXICO

X3 - X2 - X1 - -  
- H3 - H2 - H1

Note: X0 at the bottom

Outline: 303B111GEDYP76A

X3 - X2 - X1 - - H3 - H2 - H1

X3 - X2 - X1 - - H3 - H2 - H1

X0

X3 - X2 - X1 - - H3 - H2 - H1

X3 - X2 - X1 - - H3 - H2 - H1

X0

\*2M000000\*

\*3M000000\*