



Transformer

by ABB



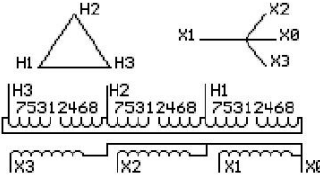
1M000000

Catalog Number **Type QL**
9T10A1026G31

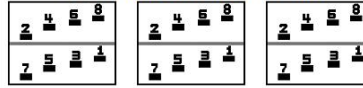
150.0 KVA **60 HZ** **3 PH** **3.6 % IMP**
40 C AMB. **115 C RISE** **220 C SYSTEM** **IS-19C**

PRIMARY (H) **480 VOLTS (LINE-LINE)**
SECONDARY (X) **220 VOLTS (LINE-LINE)**
 127 VOLTS (LINE-NEUTRAL)

JUMPER CONNECTION	TAP VOLTS
1-2	503
2-3	492
3-4	480
4-5	466
5-6	455
6-7	445
7-8	434



COIL TAP ARRANGEMENT



NET WGT	INSPECTION & FINAL TEST
1250 LB	TEST
567.0 Kg	NOG
89109	N137!
DX76A	091021



LISTED 769G

ENCLOSURE TYPE 2 (IP20). OR RAINPROOF TYPE 3R (IP22) WHEN PROVIDED SHIELD 9T18Y1077G06

ASSEMBLED IN MEXICO

BEFORE HANDLING, INSTALLING AND OPERATING, SEE INSTRUCTION 475A667AAP009
ALUMINUM CONDUCTOR PRIMARY: 10 KV BIL SECONDARY: 10 KV BIL
IN ACCORDANCE WITH NEC SECTION 450-9, ALLOW AT LEAST SIX INCHES CLEARANCE FOR VENTILATION.
CHECK ADDITIONAL NEC AND LOCAL CODE

Note:

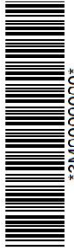
Outline: 303B112GEDXP76A

NEMA CLASS AA DRY TYPE TRANSFORMER

Meets DOE 2016 efficiency



2M000000



3M000000