



Transformer

—
by ABB



1M000000

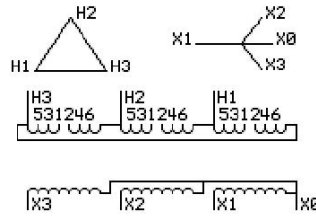
Catalog Number **Type QL**
9T10A1029

500.0 KVA 60 HZ 3 PH 4.7 % IMP
40 C AMB. 150 C RISE 220 C SYSTEM IS-19C

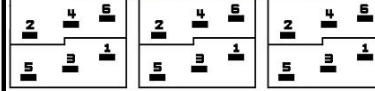
JUMPER CONNECTION

| TAP | VOLTS |
|-----|-------|
| 1-2 | 508 |
| 2-3 | 489 |
| 3-4 | 480 |
| 4-5 | 469 |
| 5-6 | 459 |

PRIMARY (H) 480 VOLTS (LINE-LINE)
SECONDARY (X) 220 VOLTS (LINE-LINE)
 127 VOLTS (LINE-NEUTRAL)



COIL TAP ARRANGEMENT



NET WGT **INSPECTION & FINAL TEST**
2900 LB
1315.4 Kg
89111 **NOG**
DX79A **N137!**
 091021



ENCLOSURE TYPE 2 (IP20). OR RAINPROOF TYPE 3R (IP22) WHEN PROVIDED SHIELD 9T18Y1079G06

ASSEMBLED IN MEXICO

BEFORE HANDLING, INSTALLING AND OPERATING, SEE INSTRUCTION 475A667AAP009
ALUMINUM CONDUCTOR PRIMARY: 10 KV BIL SECONDARY: 10 KV BIL
IN ACCORDANCE WITH NEC SECTION 450-9, ALLOW AT LEAST SIX INCHES CLEARANCE FOR VENTILATION.
CHECK ADDITIONAL NEC AND LOCAL CODE

Note:

Outline: 303B112GEDXP79A

NEMA CLASS AA DRY TYPE TRANSFORMER

Meets DOE 2016 efficiency



2M000000



3M000000