



# Transformer

—  
by ABB



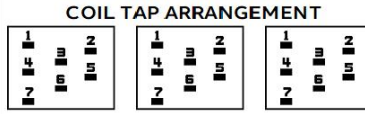
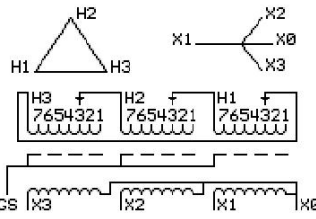
\*1M000000\*

**Catalog Number**      **Type QL**  
**9T10A1171G03**

**15.0 KVA**    **60 HZ**    **3 PH**    **4.2 % IMP**  
**40 C AMB.**    **150 C RISE**    **220 C SYSTEM**    **IS-19C**

**PRIMARY (H)**    **480 VOLTS (LINE-LINE)**  
**SECONDARY (X)**    **480 VOLTS (LINE-LINE)**  
                          **277 VOLTS (LINE-NEUTRAL)**

JUMPER CONNECTION	TAP VOLTS
1	503
2	492
3	480
4	469
5	456
6	443
7	433



**NET WGT**  
231 LB  
104.8 Kg  
89176  
UX71A

**INSPECTION & FINAL TEST**  
**NOG**  
N139!  
092021



ELECTROSTATIC GROUND SHIELD IN EACH PHASE

ENCLOSURE TYPE 2 (IP20). OR RAINPROOF TYPE 3R (IP22) WHEN PROVIDED SHIELD 9T18Y1071G06

**BEFORE HANDLING, INSTALLING AND OPERATING, SEE INSTRUCTION 475A667AAP001**  
ALUMINUM CONDUCTOR    PRIMARY: 10 KV BIL    SECONDARY: 10 KV BIL  
IN ACCORDANCE WITH NEC SECTION 450-9, ALLOW AT LEAST SIX INCHES CLEARANCE FOR VENTILATION.  
CHECK ADDITIONAL NEC AND LOCAL CODE

ASSEMBLED IN MEXICO

X3 H3 X2 H2 X1 H1 X0

Note: standard

Outline: 303B111GEUXP71A

NEMA CLASS AA DRY TYPE TRANSFORMER

Meets DOE 2016 efficiency

X0  
X1 H1  
X2 H2  
X3 H3

X0  
X1 H1  
X2 H2  
X3 H3



\*2M000000\*



\*3M000000\*