



# Transformer

—  
by ABB



\*1M000000\*

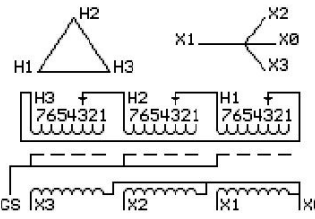
**Catalog Number**      **Type QL**  
**9T10A1172G04**

**30.0 KVA    60 HZ    3 PH    5.4 % IMP**  
**40 C AMB.    150 C RISE    220 C SYSTEM    IS-19C**

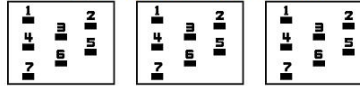
*Note: Design is based on 30.00KVA & 115C Rise 5.4% Imp.*

**PRIMARY (H)    480 VOLTS (LINE-LINE)**  
**SECONDARY (X)    480 VOLTS (LINE-LINE)**  
**277 VOLTS (LINE-NEUTRAL)**

JUMPER CONNECTION	
TAP	VOLTS
1	504
2	492
3	480
4	468
5	456
6	444
7	432



**COIL TAP ARRANGEMENT**



**NET WGT**  
330 LB  
149.7 Kg  
**INSPECTION & FINAL TEST**  
NOG  
N139!  
092021  
UX72A



LISTED 769G

ELECTROSTATIC GROUND SHIELD IN EACH PHASE

ENCLOSURE TYPE 2 (IP20). OR RAINPROOF TYPE 3R (IP22) WHEN PROVIDED SHIELD 9T18Y1072G06

**BEFORE HANDLING, INSTALLING AND OPERATING, SEE INSTRUCTION 475A667AAP001**  
ALUMINUM CONDUCTOR    PRIMARY: 10 KV BIL    SECONDARY: 10 KV BIL  
IN ACCORDANCE WITH NEC SECTION 450-9, ALLOW AT LEAST SIX INCHES CLEARANCE FOR VENTILATION.  
CHECK ADDITIONAL NEC AND LOCAL CODE

**ASSEMBLED IN MEXICO**

**X3    H3    X2    H2    X1    H1    X0**

Note: standard

Outline: 303B111GEUXP72A

NEMA CLASS AA DRY TYPE TRANSFORMER

Meets DOE 2016 efficiency

**X0**

**X1 H1**

**X2 H2**

**X3 H3**

**X0**

**X1 H1**

**X2 H2**

**X3 H3**

NEMA CLASS AA DRY TYPE TRANSFORMER      Meets DOE 2016 efficiency