

Transformer

by ABB



1M000000

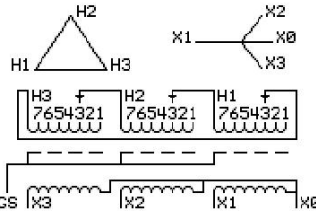
Catalog Number **Type QL**
9T10A1173G33

45.0 KVA 60 HZ 3 PH 3.6 % IMP
 40 C AMB. 115 C RISE 220 C SYSTEM IS-19C

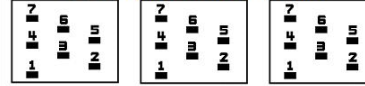
PRIMARY (H) 480 VOLTS (LINE-LINE)
 SECONDARY (X) 480 VOLTS (LINE-LINE)
 277 VOLTS (LINE-NEUTRAL)

JUMPER CONNECTION

TAP	VOLTS
1	503
2	491
3	480
4	468
5	456
6	443
7	433



COIL TAP ARRANGEMENT



NET WGT
 444 LB
 201.4 Kg
 88754
 UX73A

INSPECTION & FINAL TEST
 NOG
 N137!
 091021



ELECTROSTATIC GROUND SHIELD IN EACH PHASE

ENCLOSURE TYPE 2 (IP20). OR RAINPROOF TYPE 3R (IP22) WHEN PROVIDED SHIELD 9T18Y1072G06

ASSEMBLED IN MEXICO

BEFORE HANDLING, INSTALLING AND OPERATING, SEE INSTRUCTION 475A667AAP001
 ALUMINUM CONDUCTOR PRIMARY: 10 KV BIL SECONDARY: 10 KV BIL
 IN ACCORDANCE WITH NEC SECTION 450-9, ALLOW AT LEAST SIX INCHES CLEARANCE FOR VENTILATION.
 CHECK ADDITIONAL NEC AND LOCAL CODE

X3 H3 X2 H2 X1 H1 X0

Note: standard

Outline: 303B111GEUXP73A

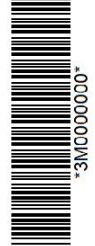
NEMA CLASS AA DRY TYPE TRANSFORMER

Meets DOE 2016 efficiency

X3 H3 X2 H2 X1 H1 X0
 X3 H3 X2 H2 X1 H1 X0
 X3 H3 X2 H2 X1 H1 X0



2M000000



3M000000