

# GE Transformer

—  
by ABB



\*1M000000\*

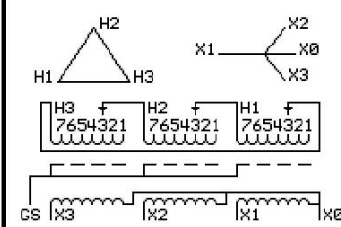
**Catalog Number**      **Type QL**  
**9T10A1174G34**

**75.0 KVA    60 HZ    3 PH    5.9 % IMP**  
**40 C AMB.    115 C RISE    220 C SYSTEM    IS-19C**

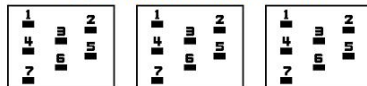
*Note: Design is based on 75.00KVA & 115C Rise 5.9% Imp.*

**PRIMARY (H)      480 VOLTS (LINE-LINE)**  
**SECONDARY (X)    480 VOLTS (LINE-LINE)**  
                           **277 VOLTS (LINE-NEUTRAL)**

JUMPER CONNECTION	
TAP	VOLTS
1	503
2	492
3	480
4	467
5	456
6	445
7	430



**COIL TAP ARRANGEMENT**



**NET WGT**  
 603 LB  
 273.5 Kg  
 89185  
 UX74A

**INSPECTION & FINAL TEST**  
 NOG  
 N139!  
 092021



ELECTROSTATIC GROUND SHIELD IN EACH PHASE

ENCLOSURE TYPE 2 (IP20). OR RAINPROOF TYPE 3R (IP22) WHEN PROVIDED SHIELD 9T18Y1074G06

ASSEMBLED IN MEXICO

**BEFORE HANDLING, INSTALLING AND OPERATING, SEE INSTRUCTION 475A667AAP001**  
 ALUMINUM CONDUCTOR    PRIMARY: 10 KV BIL    SECONDARY: 10 KV BIL  
 IN ACCORDANCE WITH NEC SECTION 450-9, ALLOW AT LEAST SIX INCHES CLEARANCE FOR VENTILATION.  
 CHECK ADDITIONAL NEC AND LOCAL CODE

**X3    H3    X2    H2    X1    H1**

**Note: X0 at the bottom**

Outline: 303B111GEUXP74A

NEMA CLASS AA DRY TYPE TRANSFORMER

Meets DOE 2016 efficiency

X0

X3	H3	X2	H2	X1	H1
-	-	-	-	-	-
X3	H3	X2	H2	X1	H1
-	-	-	-	-	-

\*2M000000\*

\*3M000000\*