



# Transformer

—  
by ABB



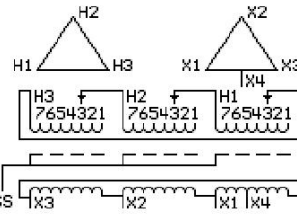
\*1M000000\*

**Catalog Number**      **Type QL**  
**9T10A1181G03**

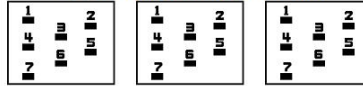
**15.0 KVA    60 HZ    3 PH    4.9 % IMP**  
**40 C AMB.    150 C RISE    220 C SYSTEM    IS-19C**

**PRIMARY (H)    480 VOLTS (LINE-LINE)**  
**SECONDARY (X)    240 VOLTS (LINE-LINE)**  
**120 VOLTS (1 PH MIDTAP X1-X4)**

JUMPER CONNECTION	TAP VOLTS
1	504
2	492
3	480
4	468
5	456
6	443
7	431



### COIL TAP ARRANGEMENT



<b>NET WGT</b>	<b>INSPECTION &amp; FINAL TEST</b>
231 LB	
104.8 Kg	<b>NOG</b>
89210	<b>N139!</b>
UX71A	<b>092021</b>



LISTED 769G

ELECTROSTATIC GROUND SHIELD IN EACH PHASE

ENCLOSURE TYPE 2 (IP20). OR RAINPROOF TYPE 3R (IP22) WHEN PROVIDED SHIELD 9T18Y1071G06

REDUCED CAPACITY TAP RATED AT 5% OF 3 PH KVA

BEFORE HANDLING, INSTALLING AND OPERATING, SEE INSTRUCTION 475A667AAP001

ALUMINUM CONDUCTOR    PRIMARY: 10 KV BIL    SECONDARY: 10 KV BIL

IN ACCORDANCE WITH NEC SECTION 450-9, ALLOW AT LEAST SIX INCHES CLEARANCE FOR VENTILATION.

CHECK ADDITIONAL NEC AND LOCAL CODE

NEMA CLASS AA DRY TYPE TRANSFORMER

Meets DOE 2016 efficiency

ASSEMBLED IN MEXICO

**X3    H3    X2    H2    X1    H1    X4**

Note: MID-TAP

Outline: 303B111GEUXP71A

X3	H3	X2	H2	X1	H1	X4
-	-	-	-	-	-	-
X3	H3	X2	H2	X1	H1	X4
-	-	-	-	-	-	-



\*2M000000\*



\*3M000000\*