



Transformer

by ABB



1M000000

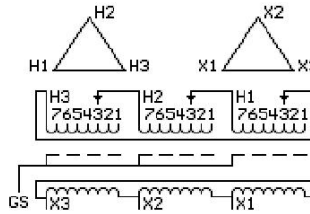
Catalog Number **Type QL**
9T10A1193G04

45.0 KVA 60 HZ 3 PH 3.9 % IMP
40 C AMB. 150 C RISE 220 C SYSTEM IS-19C

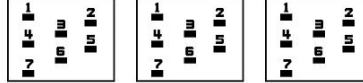
Note: Design is based on 45.00KVA & 150C Rise 3.9% Imp.

PRIMARY (H) 480 VOLTS (LINE-LINE)
SECONDARY (X) 240 VOLTS (LINE-LINE)

JUMPER CONNECTION TAP	VOLTS
1	503
2	493
3	480
4	467
5	457
6	444
7	431



COIL TAP ARRANGEMENT



NET WGT
444 LB
201.4 Kg
88764
UX73A

INSPECTION & FINAL TEST
NOG
N137!
091021



LISTED 769G

ELECTROSTATIC GROUND SHIELD IN EACH PHASE

ENCLOSURE TYPE 2 (IP20). OR RAINPROOF TYPE 3R (IP22) WHEN PROVIDED SHIELD 9T18Y1072G06

ASSEMBLED IN MEXICO

BEFORE HANDLING, INSTALLING AND OPERATING, SEE INSTRUCTION 475A667AAP001
ALUMINUM CONDUCTOR PRIMARY: 10 KV BIL SECONDARY: 10 KV BIL
IN ACCORDANCE WITH NEC SECTION 450-9, ALLOW AT LEAST SIX INCHES CLEARANCE FOR VENTILATION.
CHECK ADDITIONAL NEC AND LOCAL CODE

X3 H3 X2 H2 X1 H1 -

Note: standard

Outline: 303B111GEUXP73A

NEMA CLASS AA DRY TYPE TRANSFORMER

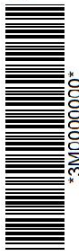
Meets DOE 2016 efficiency

X3 H3 X2 H2 X1 H1



2M000000

X3 H3 X2 H2 X1 H1



3M000000