



Transformer Transformateur

—
by ABB



1M000000

Catalog Number / No. Catalogue

9T10A1302

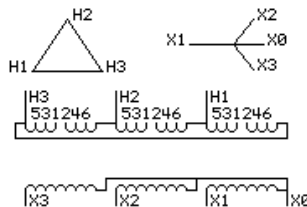
750.0 KVA 60 HZ 3 PH 6.1 % IMP

40 C AMB. IS-19C **150** C RISE ÉLÉV. TEMP. **220** C SYSTEM CLASS D'ISOL.

Type QL

JUMPER
CONNECTION

TAP	VOLTS
1-2	504
2-3	493
3-4	480
4-5	468
5-6	456



NET WGT
POIDS NET

4292 LB

1946.9 Kg

91586

DY67A

INSPECTION
& FINAL TEST
INSPECTION &
ESSAIS FINAUX

NPF

N246@

111722



Energy
Verified

EV23760



Energy
Verified

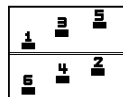
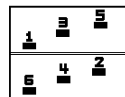
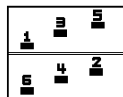
EV519886



LISTED 769G

PRIMARY (H) 480 VOLTS (LINE-LINE)
SECONDARY (X) 208 VOLTS (LINE-LINE)
120 VOLTS (LINE-NEUTRAL)

COIL TAP ARRANGEMENT
ENSEMBLE DE PRISE D'ENROULEMENT



PRIMARY/PRIMAIRE: 10 KV BIL

SECONDARY/SECONDAIRE: 10 KV BIL

ALUMINUM CONDUCTOR/CONDUCTEUR

ENCLOSURE TYPE2 (IP20), FOR TYPE 3R INSTALL RAINSHIELD 9T18Y1067G06 / BOÎTIER TYPE2 (IP20), POUR LE TYPE 3R INSTALLER L'ÉCRAN DE PROTECTION CONTRE LA PLUIE 9T18Y1067G06

BEFORE HANDLING. INSTALLING AND OPERATING SEE INSTRUCTION 475A667AAP009/ VOIR INSTRUCTION 475A665AAP002 AVANT LA MANIPULATION, L'INSTALLATION OU L'OPÉRATION

IN ACCORDANCE WITH NEC SECTION 450-9. ALLOW AT LEAST SIX INCHES CLEARANCE FOR VENTILATION. CHECK ADDITIONAL NEC AND LOCAL CODE / LAISSER UNE ESPACE DE 6 POUCHES POUR ASSURER UNE VENTILATION ADÉQUATE. VÉRIFIER LES CONSIGNES DU CODE ÉLECTRIQUE CANADIEN OU AUTRES CODES.

ASSEMBLED IN MEXICO/ASSEMBLÉ AU MEXIQUE

Note:

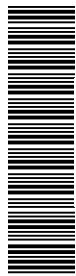
Outline: 303B112GEDYP67A

NEMA CLASS AA DRY TYPE TRANSFORMER
TRANSFORMATEUR À SEC NEMA CLASSE AA

Energy efficiency in accordance with DOE2016 and CSA C208.2-18
Conforme au rendement DOE 2016 et CSA C802.2-18



2M0000000



3M0000000