



Transformer

by ABB



1M000000

Catalog Number **Type** QL
9T10A1344G02

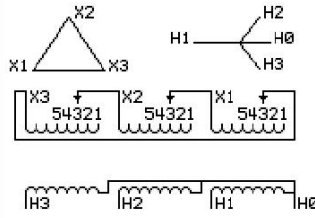
75.0 KVA **60 HZ** **3 PH** **6.6 % IMP**
40 C AMB. **150 C RISE** **220 C SYSTEM** **IS-19C**

Note: Design is based on 75.00KVA & 150C Rise 6.6% Imp.

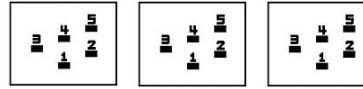
PRIMARY (X) **208 VOLTS (LINE-LINE)**
SECONDARY (H) **480 VOLTS (LINE-LINE)**
 277 VOLTS (LINE-NEUTRAL)

JUMPER CONNECTION

TAP	VOLTS
1	217
2	214
3	208
4	204
5	197



COIL TAP ARRANGEMENT



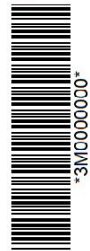
NET WGT
561 LB
254.5 Kg
89273
UY74A

INSPECTION & FINAL TEST
NOG
N137!
091021



LISTED 769G

H3	X3	H2	X2	H1	X1
-	-	-	-	-	-
H3	X3	H2	X2	H1	X1
-	-	-	-	-	-



ENCLOSURE TYPE 2 (IP20). OR RAINPROOF TYPE 3R (IP22) WHEN PROVIDED SHIELD 9T18Y1074G06

ASSEMBLED IN MEXICO

BEFORE HANDLING, INSTALLING AND OPERATING, SEE INSTRUCTION 475A667AAP001
ALUMINUM CONDUCTOR PRIMARY: 10 KV BIL SECONDARY: 10 KV BIL
IN ACCORDANCE WITH NEC SECTION 450-9, ALLOW AT LEAST SIX INCHES CLEARANCE FOR VENTILATION.
CHECK ADDITIONAL NEC AND LOCAL CODE

H3 X3 H2 X2 H1 X1

Note: H0 at the bottom

Outline: 303B111GEUYP74A

NEMA CLASS AA DRY TYPE TRANSFORMER

Meets DOE 2016 efficiency

H0