



Transformer

—
by ABB



1M000000

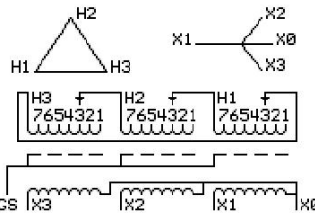
Catalog Number **Type QL**
9T10A1451G04

15.0 KVA 60 HZ 3 PH 4.2 % IMP
40 C AMB. 150 C RISE 220 C SYSTEM IS-19C

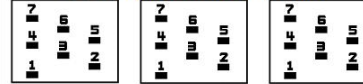
Note: Design is based on 15.00KVA & 150C Rise 4.2% Imp.

PRIMARY (H) 208 VOLTS (LINE-LINE)
SECONDARY (X) 208 VOLTS (LINE-LINE)
 120 VOLTS (LINE-NEUTRAL)

JUMPER CONNECTION	TAP VOLTS
1	219
2	213
3	208
4	202
5	198
6	192
7	188



COIL TAP ARRANGEMENT



NET WGT INSPECTION & FINAL TEST
231 LB TEST
104.8 Kg NOG
89305 N139!
UX71A 092021



ELECTROSTATIC GROUND SHIELD IN EACH PHASE

ENCLOSURE TYPE 2 (IP20). OR RAINPROOF TYPE 3R (IP22) WHEN PROVIDED SHIELD 9T18Y1071G06

BEFORE HANDLING, INSTALLING AND OPERATING, SEE INSTRUCTION 475A667AAP001
ALUMINUM CONDUCTOR PRIMARY: 10 KV BIL SECONDARY: 10 KV BIL
IN ACCORDANCE WITH NEC SECTION 450-9, ALLOW AT LEAST SIX INCHES CLEARANCE FOR VENTILATION.
CHECK ADDITIONAL NEC AND LOCAL CODE

NEMA CLASS AA DRY TYPE TRANSFORMER

Meets DOE 2016 efficiency

ASSEMBLED IN MEXICO

X3 H3 X2 H2 X1 H1 X0

Note: **standard**

Outline: 303B111GEUXP71A

X0	-	-	-	-	-	-	-
X1	-	-	-	-	-	-	-
H1	-	-	-	-	-	-	-
X2	-	-	-	-	-	-	-
H2	-	-	-	-	-	-	-
X3	-	-	-	-	-	-	-
H3	-	-	-	-	-	-	-
X0	-	-	-	-	-	-	-
X1	-	-	-	-	-	-	-
H1	-	-	-	-	-	-	-
X2	-	-	-	-	-	-	-
H2	-	-	-	-	-	-	-
X3	-	-	-	-	-	-	-
H3	-	-	-	-	-	-	-
X0	-	-	-	-	-	-	-



2M000000



3M000000