



Transformer

—
by ABB



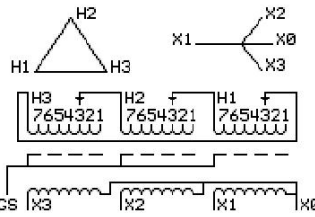
1M000000

Catalog Number **Type QL**
9T10A1452G03

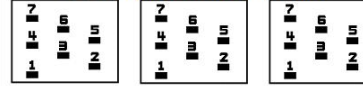
30.0 KVA **60 HZ** **3 PH** **5.1 % IMP**
40 C AMB. **150 C RISE** **220 C SYSTEM** **IS-19C**

PRIMARY (H) **208 VOLTS (LINE-LINE)**
SECONDARY (X) **208 VOLTS (LINE-LINE)**
 120 VOLTS (LINE-NEUTRAL)

JUMPER CONNECTION	TAP VOLTS
1	218
2	214
3	208
4	202
5	198
6	192
7	188



COIL TAP ARRANGEMENT



NET WGT	INSPECTION & FINAL TEST
330 LB	
149.7 Kg	NOG
89308	N139!
UX72A	092021



LISTED 769G

ELECTROSTATIC GROUND SHIELD IN EACH PHASE

ENCLOSURE TYPE 2 (IP20). OR RAINPROOF TYPE 3R (IP22) WHEN PROVIDED SHIELD 9T18Y1072G06

BEFORE HANDLING, INSTALLING AND OPERATING, SEE INSTRUCTION 475A667AAP001
ALUMINUM CONDUCTOR PRIMARY: 10 KV BIL SECONDARY: 10 KV BIL
IN ACCORDANCE WITH NEC SECTION 450-9, ALLOW AT LEAST SIX INCHES CLEARANCE FOR VENTILATION.
CHECK ADDITIONAL NEC AND LOCAL CODE

NEMA CLASS AA DRY TYPE TRANSFORMER

Meets DOE 2016 efficiency

ASSEMBLED IN MEXICO

X3 H3 X2 H2 X1 H1 X0

Note: standard

Outline: 303B111GEUXP72A

X3	H3	X2	H2	X1	H1	X0
-	-	-	-	-	-	-
X3	H3	X2	H2	X1	H1	X0
-	-	-	-	-	-	-



2M000000



3M000000