



Transformer

—
by ABB



1M000000

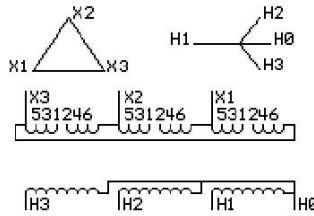
Catalog Number **Type QL**
9T10A1538

300.0 KVA **60 HZ** **3 PH** **5.5 % IMP**
40 C AMB. **150 C RISE** **220 C SYSTEM** **IS-19C**

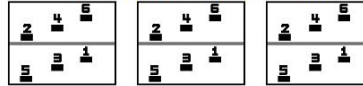
PRIMARY (X) **240 VOLTS (LINE-LINE)**
SECONDARY (H) **480 VOLTS (LINE-LINE)**
 277 VOLTS (LINE-NEUTRAL)

JUMPER CONNECTION

TAP	VOLTS
1-2	251
2-3	244
3-4	240
4-5	231
5-6	224



COIL TAP ARRANGEMENT



NET WGT	INSPECTION & FINAL TEST
1670 LB	
757.5 Kg	NOG
89337	N139!
DY78A	092021



ENCLOSURE TYPE 2 (IP20). OR RAINPROOF TYPE 3R (IP22) WHEN PROVIDED SHIELD 9T18Y1077G06

ASSEMBLED IN MEXICO

BEFORE HANDLING, INSTALLING AND OPERATING, SEE INSTRUCTION 475A667AAP009
ALUMINUM CONDUCTOR **PRIMARY: 10 KV BIL** **SECONDARY: 10 KV BIL**
IN ACCORDANCE WITH NEC SECTION 450-9, ALLOW AT LEAST SIX INCHES CLEARANCE FOR VENTILATION.
CHECK ADDITIONAL NEC AND LOCAL CODE

Note:

Outline: 303B112GEDYP78A

NEMA CLASS AA DRY TYPE TRANSFORMER

Meets DOE 2016 efficiency



2M000000



3M000000