



Transformer

—
by ABB



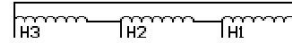
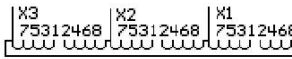
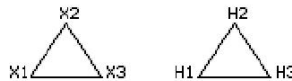
1M000000

Catalog Number **Type QL**
9T10A1547

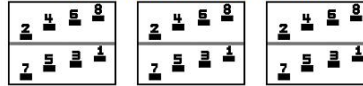
225.0 KVA 60 HZ 3 PH 5.6 % IMP
40 C AMB. 115 C RISE 220 C SYSTEM IS-19C

PRIMARY (X) 240 VOLTS (LINE-LINE)
SECONDARY (H) 480 VOLTS (LINE-LINE)

JUMPER CONNECTION	
TAP	VOLTS
1-2	253
2-3	246
3-4	240
4-5	234
5-6	227
6-7	221
7-8	215



COIL TAP ARRANGEMENT



NET WGT	INSPECTION & FINAL TEST
1450 LB	NOG
657.7 Kg	N139!
89342	092021
DY77A	



ENCLOSURE TYPE 2 (IP20). OR RAINPROOF TYPE 3R (IP22) WHEN PROVIDED SHIELD 9T18Y1077G06

ASSEMBLED IN MEXICO

BEFORE HANDLING, INSTALLING AND OPERATING, SEE INSTRUCTION 475A667AAP009
 ALUMINUM CONDUCTOR PRIMARY: 10 KV BIL SECONDARY: 10 KV BIL
 IN ACCORDANCE WITH NEC SECTION 450-9, ALLOW AT LEAST SIX INCHES CLEARANCE FOR VENTILATION.
 CHECK ADDITIONAL NEC AND LOCAL CODE

Note:

Outline: 303B112GEDYP77A

NEMA CLASS AA DRY TYPE TRANSFORMER

Meets DOE 2016 efficiency



2M000000



3M000000