



# Transformer

by ABB



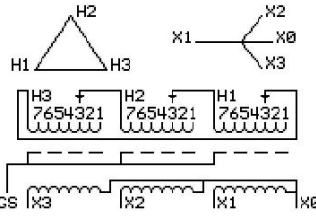
\*1M000000\*

**Catalog Number**      **Type QL**  
**9T10A2112G03**

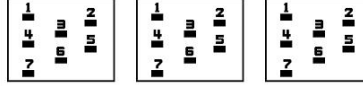
**30.0 KVA**    **60 HZ**    **3 PH**    **5 % IMP**  
**40 C AMB.**    **150 C RISE**    **220 C SYSTEM**    **IS-19C**

**PRIMARY (H)**    **400 VOLTS (LINE-LINE)**  
**SECONDARY (X)**    **208 VOLTS (LINE-LINE)**  
                          **120 VOLTS (LINE-NEUTRAL)**

JUMPER CONNECTION	TAP VOLTS
1	420
2	410
3	400
4	390
5	380
6	370
7	360



### COIL TAP ARRANGEMENT



<b>NET WGT</b> 330 LB 149.7 Kg	<b>INSPECTION &amp; FINAL TEST</b> <b>NOG</b> N139! 092021
--------------------------------------	---



LISTED 769G

ELECTROSTATIC GROUND SHIELD IN EACH PHASE

ENCLOSURE TYPE 2 (IP20). OR RAINPROOF TYPE 3R (IP22) WHEN PROVIDED SHIELD 9T18Y1072G06

ASSEMBLED IN MEXICO

**BEFORE HANDLING, INSTALLING AND OPERATING, SEE INSTRUCTION 475A667AAP001**  
ALUMINUM CONDUCTOR    PRIMARY: 10 KV BIL    SECONDARY: 10 KV BIL  
IN ACCORDANCE WITH NEC SECTION 450-9, ALLOW AT LEAST SIX INCHES CLEARANCE FOR VENTILATION.  
CHECK ADDITIONAL NEC AND LOCAL CODE

**X3   H3   X2   H2   X1   H1   X0**

Note: **standard**

Outline: 303B111GEUXP72A

NEMA CLASS AA DRY TYPE TRANSFORMER

Meets DOE 2016 efficiency

X0	-	-	-	-	-	-	-
X1	-	-	-	-	-	-	-
H1	-	-	-	-	-	-	-
X2	-	-	-	-	-	-	-
H2	-	-	-	-	-	-	-
X3	-	-	-	-	-	-	-
H3	-	-	-	-	-	-	-
X0	-	-	-	-	-	-	-



\*2M000000\*



\*3M000000\*