



# Transformer

by ABB



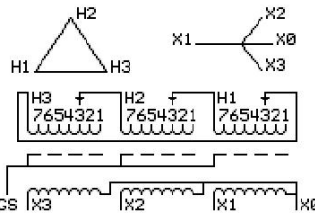
\*1M000000\*

**Catalog Number** 9T10A2221G03 **Type** QL

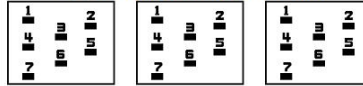
15.0 KVA 60 HZ 3 PH 3.6 % IMP  
40 C AMB. 150 C RISE 220 C SYSTEM IS-19C

PRIMARY (H) 460 VOLTS (LINE-LINE)  
SECONDARY (X) 220 VOLTS (LINE-LINE)  
127 VOLTS (LINE-NEUTRAL)

JUMPER CONNECTION	TAP VOLTS
1	483
2	472
3	460
4	449
5	436
6	425
7	415



### COIL TAP ARRANGEMENT



**NET WGT** 231 LB  
**INSPECTION & FINAL TEST**  
 104.8 Kg  
 89413  
 UX71A  
**NOG** N139!  
 092021



LISTED 769G

ELECTROSTATIC GROUND SHIELD IN EACH PHASE

ENCLOSURE TYPE 2 (IP20). OR RAINPROOF TYPE 3R (IP22) WHEN PROVIDED SHIELD 9T18Y1071G06

**BEFORE HANDLING, INSTALLING AND OPERATING, SEE INSTRUCTION 475A667AAP001**  
 ALUMINUM CONDUCTOR PRIMARY: 10 KV BIL SECONDARY: 10 KV BIL  
 IN ACCORDANCE WITH NEC SECTION 450-9, ALLOW AT LEAST SIX INCHES CLEARANCE FOR VENTILATION.  
 CHECK ADDITIONAL NEC AND LOCAL CODE

NEMA CLASS AA DRY TYPE TRANSFORMER

Meets DOE 2016 efficiency

ASSEMBLED IN MEXICO

X3 H3 X2 H2 X1 H1 X0

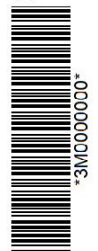
Note: standard

Outline: 303B111GEUXP71A

X0  
 X1 H1  
 X2 H2  
 X3 H3



\*2M000000\*



\*3M000000\*