



Transformer

by ABB



1M000000

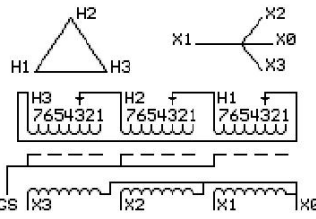
Catalog Number **Type QL**
9T10C1002G34

30.0 KVA 60 HZ 3 PH 3.7 % IMP
40 C AMB. 115 C RISE 220 C SYSTEM IS-19C

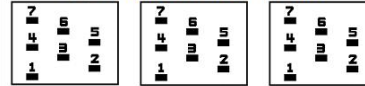
Note: Design is based on 30.00KVA & 115C Rise 3.7% Imp.

PRIMARY (H) 480 VOLTS (LINE-LINE)
SECONDARY (X) 208 VOLTS (LINE-LINE)
120 VOLTS (LINE-NEUTRAL)

JUMPER CONNECTION	TAP VOLTS
1	503
2	493
3	480
4	468
5	455
6	445
7	432



COIL TAP ARRANGEMENT



NET WGT	INSPECTION & FINAL TEST
353 LB	
160.1 Kg	NOG
89476	N139!
UX72C	092021



LISTED 769G

ELECTROSTATIC GROUND SHIELD IN EACH PHASE

ENCLOSURE TYPE 2 (IP20). OR RAINPROOF TYPE 3R (IP22) WHEN PROVIDED SHIELD 9T18Y1072G06

ASSEMBLED IN MEXICO

BEFORE HANDLING, INSTALLING AND OPERATING, SEE INSTRUCTION 475A667AAP001
COPPER CONDUCTOR PRIMARY: 10 KV BIL SECONDARY: 10 KV BIL
IN ACCORDANCE WITH NEC SECTION 450-9, ALLOW AT LEAST SIX INCHES CLEARANCE FOR VENTILATION.
CHECK ADDITIONAL NEC AND LOCAL CODE

X3 H3 X2 H2 X1 H1 X0

Note: standard

Outline: 303B111GEUXP72C

NEMA CLASS AA DRY TYPE TRANSFORMER

Meets DOE 2016 efficiency

X0
X1
H1
H2
X2
H3
X3

X0
X1
H1
H2
X2
H3
X3



2M000000



3M000000