



# Transformer



\*1M000000\*

Catalog Number  
**9T10C1005G03**

Type **QL**

**112.5 KVA 60 HZ 3 PH 5.2 % IMP**

40 C AMB. 150 C RISE 220 C SYSTEM IS-19C

PRIMARY (H) 480 VOLTS (LINE-LINE)  
SECONDARY (X) 208 VOLTS (LINE-LINE)  
120 VOLTS (LINE-NEUTRAL)

ELECTROSTATIC GROUND SHIELD IN EACH PHASE

ENCLOSURE TYPE 2 (IP20). OR RAINPROOF TYPE 3R (IP22) WHEN PROVIDED SHIELD 9T18Y1074G06

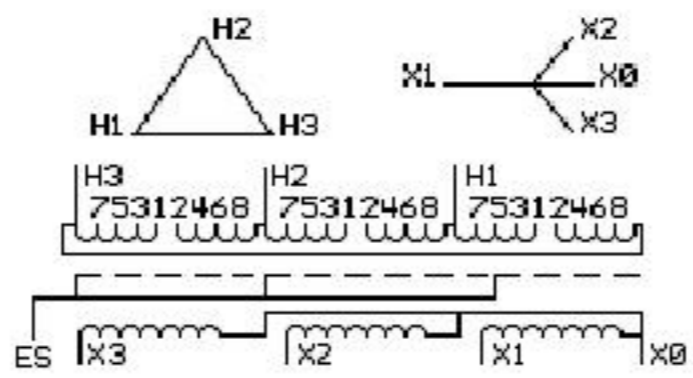
BEFORE HANDLING, INSTALLING AND OPERATING, SEE INSTRUCTION 475A667AAP001  
COPPER CONDUCTOR PRIMARY: 10 KV BIL SECONDARY: 10 KV BIL Outline: 303B111GEDYP75C

**IN ACCORDANCE WITH NEC SECTION 450-9, ALLOW AT LEAST SIX INCHES CLEARANCE FOR VENTILATION. CHECK ADDITIONAL NEC AND LOCAL CODE**

GE Energy Industrial Solutions

NEMA CLASS AA DRY TYPE TRANSFORMER

Meets DOE 2016 efficiency



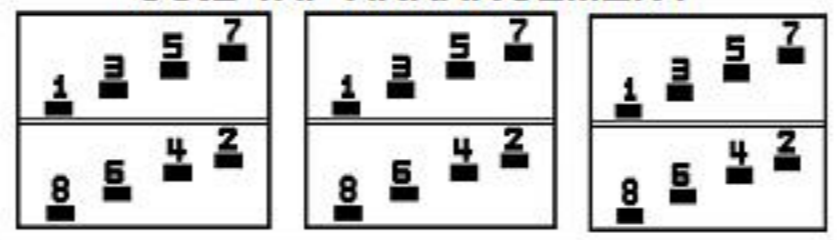
JUMPER CONNECTION	
TAP	VOLTS
1-2	503
2-3	492
3-4	480
4-5	469
5-6	457
6-7	446
7-8	435

NET WGT  
790 LB  
358.3 Kg

60328  
DY75C  
NOG  
021216

INSPECTION & FINAL TEST N607!

### COIL TAP ARRANGEMENT

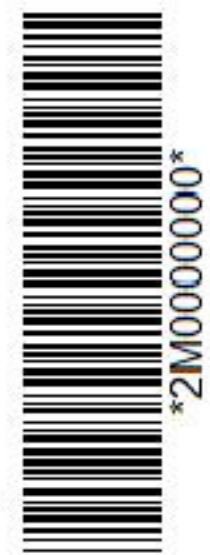


Assembled in Mexico

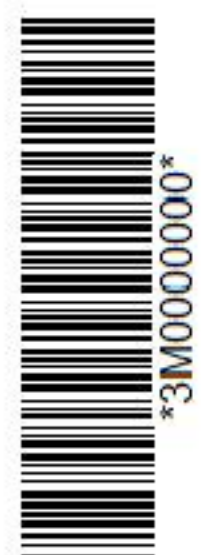
X3 - X2 - X1 - -  
- H3 - H2 - H1

Note: X0 at the bottom

X1 - -  
X2 - H1  
H3 - H2  
X3 - X1 - H1  
X2 - H2  
X3 - H3 - H1



\*2M000000\*



\*3M000000\*