



# Transformer

—  
by ABB



\*1M000000\*

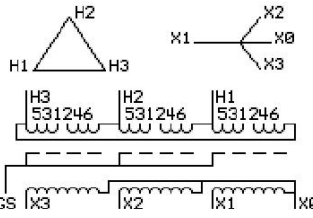
**Catalog Number**      **Type QL**  
**9T10C1008G63**

**300.0 KVA    60 HZ    3 PH    3 % IMP**  
**40 C AMB.    80 C RISE    220 C SYSTEM    IS-19C**

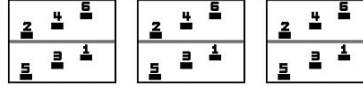
*Note: Design is based on 500.0KVA & 115C Rise 5% Imp.*

**PRIMARY (H)    480 VOLTS (LINE-LINE)**  
**SECONDARY (X)    208 VOLTS (LINE-LINE)**  
**120 VOLTS (LINE-NEUTRAL)**

JUMPER CONNECTION	
TAP	VOLTS
1-2	500
2-3	490
3-4	480
4-5	470
5-6	460



### COIL TAP ARRANGEMENT



<b>NET WGT</b>	<b>INSPECTION &amp; FINAL TEST</b>
3720 LB	
1687.4 Kg	<b>NOG</b>
89544	<b>N137!</b>
<b>DX79C</b>	<b>091021</b>



ELECTROSTATIC GROUND SHIELD IN EACH PHASE

ENCLOSURE TYPE 2 (IP20). OR RAINPROOF TYPE 3R (IP22) WHEN PROVIDED SHIELD 9T18Y1079G06

ASSEMBLED IN MEXICO

**BEFORE HANDLING, INSTALLING AND OPERATING, SEE INSTRUCTION 475A667AAP009**

COPPER CONDUCTOR      PRIMARY: 10 KV BIL      SECONDARY: 10 KV BIL

IN ACCORDANCE WITH NEC SECTION 450-9, ALLOW AT LEAST SIX INCHES CLEARANCE FOR VENTILATION.

CHECK ADDITIONAL NEC AND LOCAL CODE

Note:

Outline: 303B112GEDXP79C

NEMA CLASS AA DRY TYPE TRANSFORMER

Meets DOE 2016 efficiency



\*2M000000\*



\*3M000000\*