



Transformer

—
by ABB



1M000000

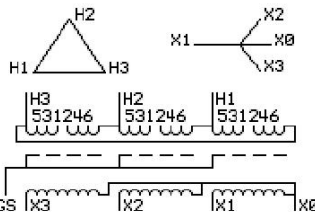
Catalog Number **Type QL**
9T10C1008G64

300.0 KVA 60 HZ 3 PH 3 % IMP
40 C AMB. 80 C RISE 220 C SYSTEM IS-19C

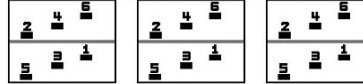
Note: Design is based on 500.0KVA & 115C Rise 5% Imp.

PRIMARY (H) 480 VOLTS (LINE-LINE)
SECONDARY (X) 208 VOLTS (LINE-LINE)
 120 VOLTS (LINE-NEUTRAL)

JUMPER CONNECTION	TAP VOLTS
1-2	500
2-3	490
3-4	480
4-5	470
5-6	460



COIL TAP ARRANGEMENT



NET WGT **INSPECTION & FINAL TEST**
3720 LB
1687.4 Kg
89544 **NOG**
DX79C **N137!**
 091021



ELECTROSTATIC GROUND SHIELD IN EACH PHASE

ENCLOSURE TYPE 2 (IP20). OR RAINPROOF TYPE 3R (IP22) WHEN PROVIDED SHIELD 9T18Y1079G06

ASSEMBLED IN MEXICO

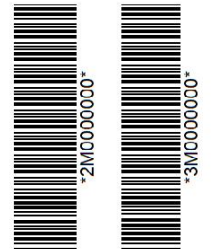
BEFORE HANDLING, INSTALLING AND OPERATING, SEE INSTRUCTION 475A667AAP009
COPPER CONDUCTOR PRIMARY: 10 KV BIL SECONDARY: 10 KV BIL
IN ACCORDANCE WITH NEC SECTION 450-9, ALLOW AT LEAST SIX INCHES CLEARANCE FOR VENTILATION.
CHECK ADDITIONAL NEC AND LOCAL CODE

Note:

Outline: 303B112GEDXP79C

NEMA CLASS AA DRY TYPE TRANSFORMER

Meets DOE 2016 efficiency



2M000000

3M000000