



Transformer

—
by ABB



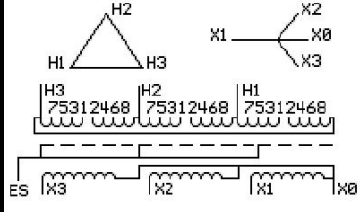
1M000000

Catalog Number **Type QL**
9T10C1078G33

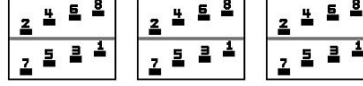
300.0 KVA 60 HZ 3 PH 3.8 % IMP
40 C AMB. 115 C RISE 220 C SYSTEM IS-19C

PRIMARY (H) 480 VOLTS (LINE-LINE)
SECONDARY (X) 380 VOLTS (LINE-LINE)
 219 VOLTS (LINE-NEUTRAL)

JUMPER CONNECTION	TAP VOLTS
1-2	504
2-3	496
3-4	480
4-5	471
5-6	455
6-7	447
7-8	431



COIL TAP ARRANGEMENT



NET WGT INSPECTION & FINAL TEST
2150 LB TEST
975.2 Kg **NOG**
89578 N137!
DX78C 091021



ELECTROSTATIC GROUND SHIELD IN EACH PHASE

ENCLOSURE TYPE 2 (IP20). OR RAINPROOF TYPE 3R (IP22) WHEN PROVIDED SHIELD 9T18Y1077G06

ASSEMBLED IN MEXICO

BEFORE HANDLING, INSTALLING AND OPERATING, SEE INSTRUCTION 475A667AAP009
COPPER CONDUCTOR PRIMARY: 10 KV BIL SECONDARY: 10 KV BIL
IN ACCORDANCE WITH NEC SECTION 450-9, ALLOW AT LEAST SIX INCHES CLEARANCE FOR VENTILATION.
CHECK ADDITIONAL NEC AND LOCAL CODE

Note:
Outline: 303B112GEDXP78C

NEMA CLASS AA DRY TYPE TRANSFORMER Meets DOE 2016 efficiency



2M000000

3M000000