



Transformer

by ABB



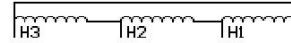
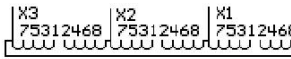
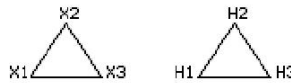
1M000000

Catalog Number **Type QL**
9T10C1115

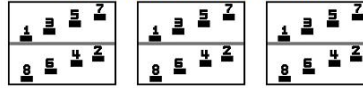
112.5 KVA 60 HZ 3 PH 5.9 % IMP
40 C AMB. 150 C RISE 220 C SYSTEM IS-19C

PRIMARY (X) 480 VOLTS (LINE-LINE)
SECONDARY (H) 575 VOLTS (LINE-LINE)

JUMPER CONNECTION	
TAP	VOLTS
1-2	504
2-3	493
3-4	480
4-5	465
5-6	454
6-7	444
7-8	433



COIL TAP ARRANGEMENT



NET WGT	INSPECTION & FINAL TEST
790 LB	
358.3 Kg	NOG
89609	N137!
DY75C	091021



LISTED 769G

H3 - H2 - H1 -
- X3 - X2 - X1 -

H3 - H2 - H1 -
- X3 - X2 - X1 -



ENCLOSURE TYPE 2 (IP20). OR RAINPROOF TYPE 3R (IP22) WHEN PROVIDED SHIELD 9T18Y1074G06

ASSEMBLED IN MEXICO

BEFORE HANDLING, INSTALLING AND OPERATING, SEE INSTRUCTION 475A667AAP001
 COPPER CONDUCTOR PRIMARY: 10 KV BIL SECONDARY: 10 KV BIL
 IN ACCORDANCE WITH NEC SECTION 450-9, ALLOW AT LEAST SIX INCHES CLEARANCE FOR VENTILATION.
 CHECK ADDITIONAL NEC AND LOCAL CODE

H3 - H2 - H1 - -
- X3 - X2 - X1 -
Note: standard

Outline: 303B11GEDYP75C

NEMA CLASS AA DRY TYPE TRANSFORMER

Meets DOE 2016 efficiency