



# Transformer

by ABB



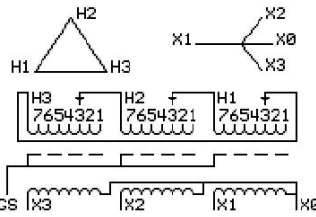
\*1M000000\*

**Catalog Number** **Type QL**  
**9T10C1172G03**

30.0 KVA 60 HZ 3 PH 4.1 % IMP  
40 C AMB. 150 C RISE 220 C SYSTEM IS-19C

PRIMARY (H) 480 VOLTS (LINE-LINE)  
SECONDARY (X) 480 VOLTS (LINE-LINE)  
277 VOLTS (LINE-NEUTRAL)

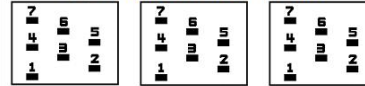
JUMPER CONNECTION	
TAP	VOLTS
1	506
2	492
3	480
4	468
5	455
6	444
7	431



NET WGT 353 LB 160.1 Kg	INSPECTION & FINAL TEST NOG N139! 092021
89623 UX72C	



### COIL TAP ARRANGEMENT



ELECTROSTATIC GROUND SHIELD IN EACH PHASE

ENCLOSURE TYPE 2 (IP20). OR RAINPROOF TYPE 3R (IP22) WHEN PROVIDED SHIELD 9T18Y1072G06

BEFORE HANDLING, INSTALLING AND OPERATING, SEE INSTRUCTION 475A667AAP001

COPPER CONDUCTOR PRIMARY: 10 KV BIL SECONDARY: 10 KV BIL

IN ACCORDANCE WITH NEC SECTION 450-9, ALLOW AT LEAST SIX INCHES CLEARANCE FOR VENTILATION.

CHECK ADDITIONAL NEC AND LOCAL CODE

ASSEMBLED IN MEXICO

X3 H3 X2 H2 X1 H1 X0

Note: standard

Outline: 303B111GEUXP72C

NEMA CLASS AA DRY TYPE TRANSFORMER

Meets DOE 2016 efficiency

X0
X1 H1
X2 H2
X3 H3
X1 H1
X2 H2
X3 H3
X1 H1
X2 H2
X3 H3



\*2M000000\*



\*3M000000\*