



# Transformer

by ABB



\*1M000000\*

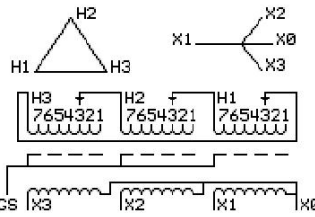
**Catalog Number**      **Type QL**  
**9T10C1173G03**

**45.0 KVA    60 HZ    3 PH    3.5 % IMP**  
**40 C AMB.    150 C RISE    220 C SYSTEM    IS-19C**

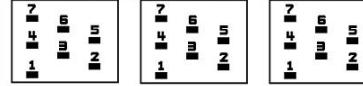
*Note: Design is based on 45.00KVA & 115C Rise 3.3% Imp.*

**PRIMARY (H)    480 VOLTS (LINE-LINE)**  
**SECONDARY (X)    480 VOLTS (LINE-LINE)**  
**277 VOLTS (LINE-NEUTRAL)**

JUMPER CONNECTION	TAP VOLTS
1	505
2	490
3	480
4	469
5	455
6	444
7	433



### COIL TAP ARRANGEMENT



**NET WGT**  
480 LB  
217.7 Kg  
88873  
UX73C

**INSPECTION & FINAL TEST**  
**NOG**  
N137!  
091021



LISTED 769G

X3 H3 X2 H2 X1 H1 -  
X3 H3 X2 H2 X1 H1 -  
X3 H3 X2 H2 X1 H1 -



\*2M000000\*



\*3M000000\*

ELECTROSTATIC GROUND SHIELD IN EACH PHASE

ENCLOSURE TYPE 2 (IP20). OR RAINPROOF TYPE 3R (IP22) WHEN PROVIDED SHIELD 9T18Y1072G06

**BEFORE HANDLING, INSTALLING AND OPERATING, SEE INSTRUCTION 475A667AAP001**

COPPER CONDUCTOR      PRIMARY: 10 KV BIL      SECONDARY: 10 KV BIL

IN ACCORDANCE WITH NEC SECTION 450-9, ALLOW AT LEAST SIX INCHES CLEARANCE FOR VENTILATION.

CHECK ADDITIONAL NEC AND LOCAL CODE

NEMA CLASS AA DRY TYPE TRANSFORMER

Meets DOE 2016 efficiency

ASSEMBLED IN MEXICO

X3 H3 X2 H2 X1 H1 -

Note: X0 at the top

Outline: 303B111GEUXP73C