



Transformer

—
by ABB



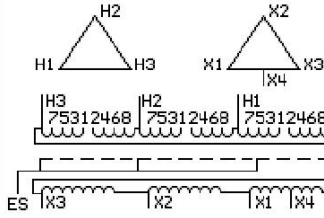
1M000000

Catalog Number **Type QL**
9T10C1185G34

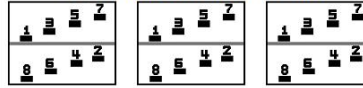
112.5 KVA 60 HZ 3 PH 3.7 % IMP
40 C AMB. 115 C RISE 220 C SYSTEM IS-19C

PRIMARY (H) 480 VOLTS (LINE-LINE)
SECONDARY (X) 240 VOLTS (LINE-LINE)
 120 VOLTS (1 PH MIDTAP X1-X4)

JUMPER CONNECTION	TAP VOLTS
1-2	503
2-3	491
3-4	480
4-5	469
5-6	457
6-7	446
7-8	434



COIL TAP ARRANGEMENT



NET WGT	INSPECTION & FINAL TEST
900 LB	TEST
408.2 Kg	NOG
89664	N137!
DX75C	091021



ELECTROSTATIC GROUND SHIELD IN EACH PHASE

ENCLOSURE TYPE 2 (IP20). OR RAINPROOF TYPE 3R (IP22) WHEN PROVIDED SHIELD 9T18Y1074G06
REDUCED CAPACITY TAP RATED AT 5% OF 3 PH KVA

BEFORE HANDLING, INSTALLING AND OPERATING, SEE INSTRUCTION 475A667AAP001
COPPER CONDUCTOR PRIMARY: 10 KV BIL SECONDARY: 10 KV BIL
IN ACCORDANCE WITH NEC SECTION 450-9, ALLOW AT LEAST SIX INCHES CLEARANCE FOR VENTILATION.
CHECK ADDITIONAL NEC AND LOCAL CODE

ASSEMBLED IN MEXICO

X3 - X2 - X1 - X4
- H3 - H2 - H1
Note: MID-TAP

Outline: 303B11GEDXP75C

NEMA CLASS AA DRY TYPE TRANSFORMER

Meets DOE 2016 efficiency

X4

X1

X2

X3

X3

X2

X1

X4

X1

X2

X3

X3

X2

X1

X4

X1

X2

X3

X3

X2

X1

X4

X1

X2

X3

X3

X2

X1

X4

X1

X2

X3

X3

X2

X1

X4

X1

X2

X3

X3

X2

X1

X4

X1

X2

X3

X3

X2

X1

X4

X1

X2

X3

X3

X2

X1

X4

X1

X2

X3

X3

X2

X1

X4

X1

X2

X3

X3

X2

X1

X4

X1

X2

X3

X3

X2

X1

X4

X1

X2

X3

X3

X2

X1

X4

X1

X2

X3

X3

X2

X1

X4

X1

X2

X3

X3

X2

X1

X4

X1

X2

X3

X3

X2

X1

X4

X1

X2

X3

X3

X2

X1

X4

X1

X2

X3

X3

X2

X1

X4

X1

X2

X3

X3

X2

X1

X4

X1

X2

X3

X3

X2

X1

X4

X1

X2

X3

X3

X2

X1

X4

X1

X2

X3

X3

X2

X1

X4

X1

X2

X3

X3

X2

X1

X4

X1

X2

X3

X3

X2

X1

X4

X1

X2

X3

X3

X2

X1

X4

X1

X2

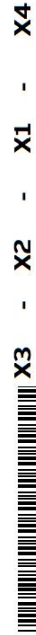
X3

X3

X2

X1

X4



2M000000



3M000000

