



Transformer

—
by ABB



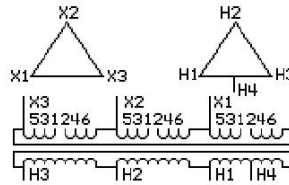
1M000000

Catalog Number **Type QL**
9T10C1326

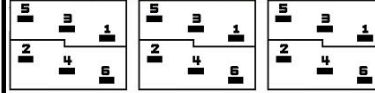
150.0 KVA 60 HZ 3 PH 3.5 % IMP
40 C AMB. 150 C RISE 220 C SYSTEM IS-19C

JUMPER CONNECTION	
TAP	VOLTS
1-2	227
2-3	215
3-4	208
4-5	202
5-6	189

PRIMARY (X) 208 VOLTS (LINE-LINE)
SECONDARY (H) 240 VOLTS (LINE-LINE)
 120 VOLTS (1 PH MIDTAP H1-H4)



COIL TAP ARRANGEMENT



NET WGT **INSPECTION & FINAL TEST**
1610 LB 730.3 Kg
89693 **NOG**
DY77C N139!
092021



ENCLOSURE TYPE 2 (IP20). OR RAINPROOF TYPE 3R (IP22) WHEN PROVIDED SHIELD 9T18Y107G06
REDUCED CAPACITY TAP RATED AT 5% OF 3 PH KVA

BEFORE HANDLING, INSTALLING AND OPERATING, SEE INSTRUCTION 475A667AAP009
COPPER CONDUCTOR PRIMARY: 10 KV BIL SECONDARY: 10 KV BIL
IN ACCORDANCE WITH NEC SECTION 450-9, ALLOW AT LEAST SIX INCHES CLEARANCE FOR VENTILATION.
CHECK ADDITIONAL NEC AND LOCAL CODE

ASSEMBLED IN MEXICO

Note:

Outline: 303B112GEDYP77C

NEMA CLASS AA DRY TYPE TRANSFORMER

Meets DOE 2016 efficiency



2M000000



3M000000