



Transformer

—
by ABB



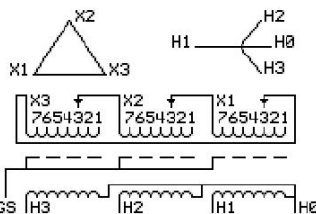
1M000000

Catalog Number 9T10C1345G34 **Type** QL

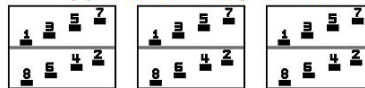
112.5 KVA 60 HZ 3 PH 3.2 % IMP
40 C AMB. 115 C RISE 220 C SYSTEM IS-19C

PRIMARY (X) 208 VOLTS (LINE-LINE)
SECONDARY (H) 480 VOLTS (LINE-LINE)
277 VOLTS (LINE-NEUTRAL)

JUMPER CONNECTION	TAP VOLTS
1	220
2	214
3	208
4	202
5	195
6	189
7	183



COIL TAP ARRANGEMENT



NET WGT	INSPECTION & FINAL TEST
1085 LB	
492.2 Kg	
89726	NOG
DY76C	N139!
	092021



LISTED 769G

ELECTROSTATIC GROUND SHIELD IN EACH PHASE

ENCLOSURE TYPE 2 (IP20). OR RAINPROOF TYPE 3R (IP22) WHEN PROVIDED SHIELD 9T18Y1076G06

ASSEMBLED IN MEXICO

BEFORE HANDLING, INSTALLING AND OPERATING, SEE INSTRUCTION 475A667AAP001
 COPPER CONDUCTOR PRIMARY: 10 KV BIL SECONDARY: 10 KV BIL
 IN ACCORDANCE WITH NEC SECTION 450-9, ALLOW AT LEAST SIX INCHES CLEARANCE FOR VENTILATION.
 CHECK ADDITIONAL NEC AND LOCAL CODE

H3 - H2 - H1 - -

- X3 - X2 - X1

Note: H0 at the bottom

Outline: 303B111GEDYP76C

NEMA CLASS AA DRY TYPE TRANSFORMER

Meets DOE 2016 efficiency

H3 - H2 - H1 - -
 - X3 - X2 - X1

H3 - H2 - H1 - -
 - X3 - X2 - X1

H0

2M000000

3M000000