



# Transformer

—  
by ABB



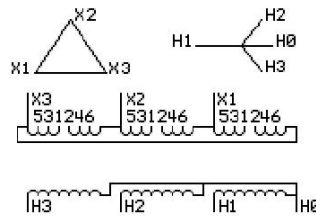
\*1M000000\*

**Catalog Number**      **Type QL**  
**9T10C1347G32**

225.0 KVA    60 HZ    3 PH    1.9 % IMP  
40 C AMB.    115 C RISE    220 C SYSTEM    IS-19C

**PRIMARY (X)**      208 VOLTS (LINE-LINE)  
**SECONDARY (H)**    480 VOLTS (LINE-LINE)  
                            277 VOLTS (LINE-NEUTRAL)

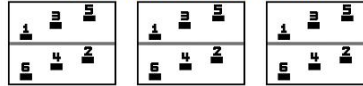
**JUMPER CONNECTION**  
**TAP VOLTS**  
1-2    225  
2-3    217  
3-4    208  
4-5    200  
5-6    191



**NET WGT**      **INSPECTION & FINAL TEST**  
1970 LB      893.6 Kg  
89733      **NOG**  
DY78C      **N139!**  
                 **092021**



**COIL TAP ARRANGEMENT**



ENCLOSURE TYPE 2 (IP20). OR RAINPROOF TYPE 3R (IP22) WHEN PROVIDED SHIELD 9T18Y1077G06

**ASSEMBLED IN MEXICO**

**BEFORE HANDLING, INSTALLING AND OPERATING, SEE INSTRUCTION 475A667AAP009**  
COPPER CONDUCTOR      PRIMARY: 10 KV BIL      SECONDARY: 10 KV BIL  
**IN ACCORDANCE WITH NEC SECTION 450-9, ALLOW AT LEAST SIX INCHES CLEARANCE FOR VENTILATION.**  
**CHECK ADDITIONAL NEC AND LOCAL CODE**

Note:

Outline: 303B112GEDYP78C

NEMA CLASS AA DRY TYPE TRANSFORMER

Meets DOE 2016 efficiency



\*2M000000\*



\*3M000000\*